

Teenagers' Pregnancy Intentions
And Decisions: A Study of Young
Women in California Choosing
To Give Birth

Jennifer J. Frost
Selene Oslak

Occasional Report No. 2
December 1999

Acknowledgments

Jennifer J. Frost is assistant director of research, The Alan Guttmacher Institute (AGI). At the time this study was conducted, Selene Oslak was senior research assistant at AGI.

The authors thank Jacqueline E. Darroch, senior vice president and vice president for research at AGI, for ongoing review of study materials and results. Special thanks go to the following individuals for their assistance in fielding the survey: Dara Joy Amboy, Ana Maria Guevara, Shira Neuberger, Kim Marschner, No-hemy Terrazas and Cindy Zedeck. In addition, the authors acknowledge the contributions of Jeannie Rosoff, Beth Fredrick and Cynthia Gomez in developing the project or the survey instrument.

The research for this study was funded by a grant from The California Wellness Foundation (TCWF). Created in 1992 as a private and independent foundation, TCWF's mission is to improve the health of the people of California through proactive support of health promotion and disease prevention programs.

Suggested citation: Frost JJ and Oslak S, *Teenagers' Pregnancy Intentions and Decisions: A Study of Young Women in California Choosing to Give Birth*, Occasional Report, New York: The Alan Guttmacher Institute, 1999, No. 2.

Table of Contents

Introduction	5
Background	5
Methodology	7
Findings	9
Discussion	18
References	21
Appendix	23
Detailed Tables	24
Survey Questionnaire	47

Introduction

Unmarried, pregnant adolescents face a variety of difficult decisions. They must decide whether to give birth or to have an abortion, and whether to raise a child they bear or to place the baby for adoption. Simultaneously, they must make the same critical decisions about school, work and relationships as other teenagers must make. In designing interventions to help young women make the transition from adolescence to adulthood without having an unintended birth, it is important to understand the life circumstances, motivations and events that lead some unmarried teenagers to become pregnant and the processes involved in the decision to carry a nonmarital teenage pregnancy to term.

Some researchers have investigated factors influencing the pregnancy options considered by young women in the United States who choose abortion;¹ others have explored pregnancy decision-making by comparing the characteristics of young women who opt for abortion, birth or adoption.² But rarely has pregnancy decision-making been investigated by examining the influences bearing on young women who choose to give birth. What events and communication patterns lead pregnant teenagers to this decision? Who helps them the most in making their decision, and what options do the women, their partners and their parents consider? And how does decision-making differ according to young women's pregnancy intentions and background characteristics?

This study, conducted in four counties in California, was designed to address these issues for a sample of unmarried pregnant 15–18-year-olds who had decided to give birth. We explore whether their pregnancies had been planned, and we compare the characteristics and motivations of adolescents who had intended their pregnancies with those of young women who had not intended to become pregnant or had not cared whether they became pregnant. We hypothesize that characteristics that distinguish childbearing teenagers from others—such as familial disadvantage, parental absence, low aspirations, abuse and certain partner characteristics—will also distinguish young childbearing women who had intended to become pregnant from those who had not. In addition, we look at how race, ethnicity and nativity are associated with adolescents' pregnancy intentions.

Finally, we investigate the factors that were most important in the young women's decision to carry their pregnancy to term. This decision may have been affected by a variety of factors: the prior intentions of the young woman and her partner regarding becoming pregnant and having a child, the woman's relationship with her partner, her age, the structure of her family, and her goals and expectations for the future.³ Other possible factors are familial or social supports that affect a young woman's ability to bear and raise a child; the accessibility of abortion services; and the acceptability of abortion to the young woman, her family and her peers.

We anticipate that the findings from these analyses will be useful for educators, program planners and others involved in designing interventions to help young women avoid unintended pregnancy and childbearing and in directing ongoing medical and educational services toward young people who might be at risk for unintended pregnancy.

Background

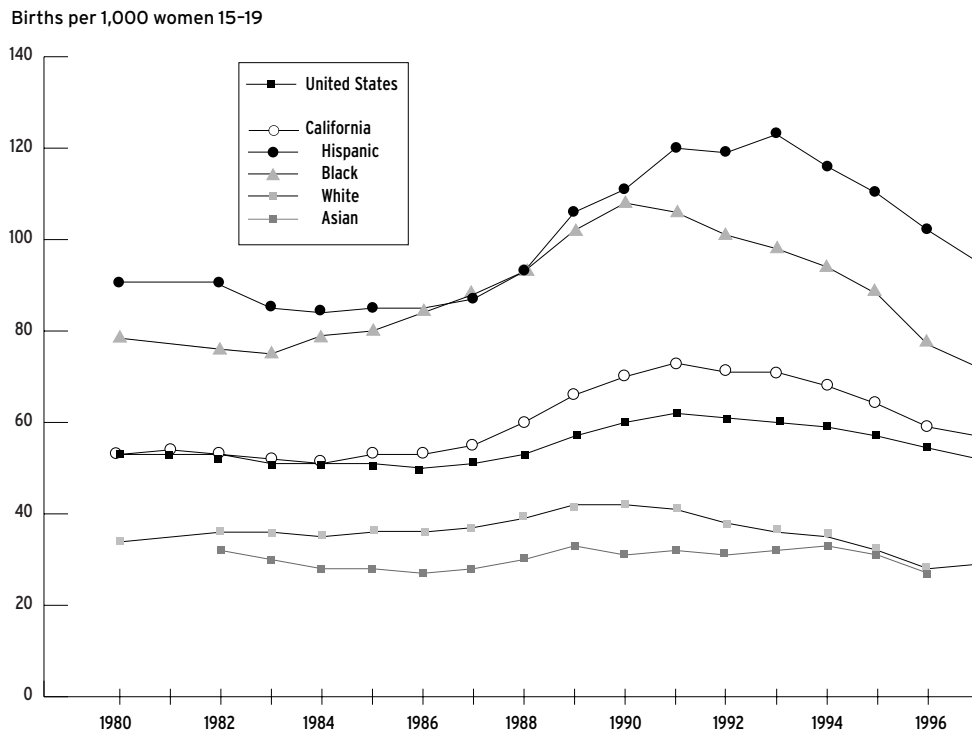
Public concern over teenage pregnancy and its resolution has triggered both political debate and academic inquiry. Data for the 1990s showing declines in teenage pregnancy and childbearing both nationally and in California⁴ raise further questions about the determinants of teenage childbearing and the factors that have contributed to the decline.

Childbearing Trends

During the early 1980s, teenage birthrates in California paralleled the national average (Figure 1, page 6). After 1985, as teenage birthrates rose across the nation, California's rate rose faster and higher than the national average, increasing by more than one-third and peaking at 73 births per 1,000 women aged 15–19 in 1991. Between 1992 and 1997, teenage birthrates dropped in both California and the United States; California's rate declined to 57 births per 1,000 women aged 15–19 in 1997.

Much of the rise in California's teenage birthrates in the late 1980s can be attributed to significantly rising birthrates among young Hispanic and black women, as well as to the growing proportion of the state's teenagers

Figure 1. Birthrate per 1,000 women aged 15–19, United States and California; and among California teenagers, birthrate by race or ethnicity; 1980–1997



who were of Hispanic origin (23% in 1980 vs. 34% in 1990⁵). The teenage birthrate rose from 91 births per 1,000 Hispanic women 15–19 in 1980 to a high of 123 per 1,000 in 1993; among black women, the rate rose from 79 births per 1,000 women aged 15–19 in 1980 to a high of 108 per 1,000 in 1990. Subsequent declines in California’s teenage birthrates are attributable to large declines in the rates for Hispanic and black women (to 95 and 72 per 1,000, respectively, in 1997), as well as to declines in the rates for white women (from a high of 42 in 1990 to 29 in 1997). Birthrates among California’s Asian teenagers rose and declined very gradually throughout the 1980s and 1990s, generally remaining close to 30 births per 1,000 women aged 15–19.

Determinants of Teenage Childbearing

Factors associated with teenage pregnancy and its resolution have been summarized in several reviews. The research clearly shows that many antecedents of teenage childbearing are related to some form of social disadvantage (e.g., poverty, low education, family and residential instability, unemployment and limited career opportunities, membership in a minority group, and sexual or physical abuse).⁶

Less clear is an understanding of the mechanisms through which these factors result in teenage child-

bearing. One hypothesis is that social disadvantage and its behavioral sequelae (early sexual initiation, less-effective contraceptive use and less reliance on abortion to end unplanned pregnancies) make it difficult for youth to avoid the risks and negative consequences of becoming pregnant and bearing a child.⁷ An alternative hypothesis is that social disadvantage contributes to attitudes or norms that favor nonmarital teenage childbearing as a rational adaptive strategy.⁸

Although most births to U.S. teenagers are unintended, a substantial minority of conceptions among teenagers are planned. In 1994, an estimated 22% of pregnancies and 44% of births among women aged 15–19 were intended at the time of conception.⁹ Furthermore, studies of the psychological determinants of teenage pregnancy and childbearing indicate that some adolescents may have even more ambivalence¹⁰ or pre-conscious motivation¹¹ toward childbearing than is detected by national surveys using a single retrospective question on women’s pregnancy intention.

Numerous studies have shown that compared with sexually active young women who avoid pregnancy or who become pregnant and choose abortion, those who become pregnant and choose to bear a child are more likely to come from economically disadvantaged families, live with only one or neither biological parent, and have been

sexually abused or raped. Typically, they also have lower educational and career aspirations and older partners.¹²

To better understand how such characteristics contribute to teenage childbearing, it is important to assess which ones are more common among young women who become pregnant intentionally and which are more common among those who become pregnant accidentally. In addition, it is important to understand the factors involved when unmarried teenagers decide to carry a pregnancy to term.

Finally, while the accessibility of abortion services may affect pregnancy resolution decisions in some areas of the country, it is unlikely to be an important factor among the young women in this study. Abortion services are generally available in the four study counties,¹³ and California is one of 14 states to provide public funding for abortion through Medicaid (Medi-Cal).¹⁴ However, when access to services is not a major problem, many women may view abortion as an unacceptable option for a variety of reasons: moral or religious beliefs, fear of physical or emotional consequences, or cultural and familial attitudes regarding women's roles and the importance of childbearing.

In fact, use of abortion to resolve unintended adolescent pregnancies has declined in recent years. Nationwide, 45% of such pregnancies among women 15–19 ended in abortion in 1994, compared with 55% in 1981.¹⁵ In California, the proportion of all (not just unintended) adolescent pregnancies ending in abortion fell from 52% in 1985¹⁶ to 49% in 1988¹⁷ and to 40% in 1992.¹⁸

Methodology

The Sample

Pregnant women aged 15–18 who had no children, had been unmarried at conception and planned to bear and raise their baby were recruited from 30 prenatal care providers in Alameda, Monterey, Santa Clara and Santa Cruz counties.* These counties were chosen because they make up a contiguous area that includes inner-city, urban and rural populations with representation from the different racial and ethnic groups found in the state.

The principal investigator or fieldwork managers briefed staff at each participating site about the study and provided them with enrollment forms and eligibility criteria. Staff were requested to identify all potentially eligible young women seeking prenatal care from July 1996 to December 1996, and were responsible for giving these women a brief description of the study and inviting them to participate. The study protocols, recruitment forms and survey instrument were approved for use by The Alan Guttmacher Institute's institutional review board in July 1996.

A total of 260 young women were identified as potential participants. Trained female fieldwork managers attempted to contact each woman by telephone to assess her eligibility and schedule the interview. Forty-four women were contacted and found to be ineligible.[†] Of the remainder, 13 women were never contacted (because their phone number was incorrect, they did not provide a phone number or they were never available at the phone number provided); 12 were eligible but refused to be interviewed or never made it to the interview, even after rescheduling multiple times;[‡] and four gave birth before the scheduled interview could be conducted. Fifty-three respondents did not keep their scheduled interview times; all but 10 rescheduled and completed interviews. Altogether, contacting, scheduling, confirming and rescheduling interviews involved more than 1,000 telephone calls.

In all, 187 young women in four counties completed the interview—78 in Alameda; 26 in Monterey; 53 in Santa Clara; and 30 in Santa Cruz. Fieldwork managers and interviewers conducted the interview either at the recruitment site, usually a clinic (134), or at the young woman's home (53), depending upon the availability of space at the site and on the young woman's preference. All interviews were conducted privately, away from other site activities or other household members.

The interviewers used a structured questionnaire with many open-ended questions; interviews took 40–105 minutes (averaging 59 minutes apiece). All interviews were audiotaped for later review, particularly of the qualitative information collected. To ensure that the young women had already made the decisions we were asking about and would not be influenced by any

*Providers were initially identified from lists of California Perinatal Services Program participants supplied by county maternal and child health directors. About 60 providers were contacted by phone to assess the number of pregnant teenagers served per year. Additional providers were identified during this inquiry. Among the 45 providers who gave us the number of teenage prenatal clients served, most were contacted and invited to participate in the study. Clinics that reportedly served fewer than 20 teenage clients per year or that were affiliated with Catholic institutions were not included. A variety of types of providers participated: 12 community health centers, six Planned Parenthood clinics, four private women's health care practices, three hospital clinics, two school-based programs for pregnant and parenting teenagers, two county prenatal care or Healthy Start case-management programs and one health department clinic. Twelve providers refused to participate: seven community health centers, one hospital clinic and four private women's health care practices.

†Ten were not aged 15–18, nine already had a child, 12 were married prior to conception, 12 were not pregnant when contacted and one planned to place the baby for adoption.

‡There is no evidence that these women were systematically different from those interviewed. They were dispersed among the four counties, and they probably came from different racial and ethnic backgrounds. (This assumption is based on their names and the clientele of the clinics where they were recruited; the screening questions did not cover race or ethnicity.)

interaction occurring during the interview, we completed interviews only with respondents who were at least three months pregnant. Respondents were compensated with \$25 at the completion of the interview.

Participants were almost equally divided between 15–16-year-olds (48%) and 17–18-year-olds (52%). Thirty-six percent were Hispanic women born in the United States, 29% were Hispanic adolescents born elsewhere (primarily Mexico), 25% were black women, 7% were non-Hispanic white teenagers and 4% were Asian. Eighty-three were native Spanish speakers, and 47 opted to have their interviews conducted in Spanish.

We had anticipated a larger number of non-Hispanic white respondents and attribute the low number to two factors. First, non-Hispanic white teenagers in California have a considerably lower birthrate (32 births per 1,000 in 1996) than their black or Hispanic peers (77 and 104 per 1,000, respectively).¹⁹ Second, we suspect that non-Hispanic white teenagers who decide to give birth are more likely to seek prenatal care from private providers or from providers who were not on the lists obtained from county health departments or who refused to participate. (Many participating sites were in communities with high concentrations of Hispanic or black residents. In addition, several private providers known to have large numbers of teenage clients and to accept Medi-Cal, and suspected to serve a more mixed clientele, refused to participate.)

Statistical Weights

We constructed weights that adjust the distribution of young women in the sample to approximate the distribution of young women giving birth in California, according to race or ethnicity (U.S.-born Hispanic, foreign-born Hispanic, black, white and Asian) and age (15–16 and 17–18). These adjustments allow us to generalize the results more broadly and ensure that the high proportion of younger respondents does not bias the findings and give undue weight to the experiences of younger teenagers.

The proportion of study participants who were native- or foreign-born Hispanics was similar to the proportion of births to 15–18-year-olds statewide and in the four study counties that were classified as native- or foreign-born Hispanic (Table 1). White teenagers were underrepresented among study participants, while black teenagers were overrepresented.

The age distribution of the study sample differs strikingly from those illustrated in the state and county data. Whereas 29% of births to 15–18-year-olds in the state and the four counties are to women aged 15–16, 48% of pregnant women were this age at the interview date. This variation may be due partly to two factors: Some study participants who were 16 years old at interview may be 17

when they deliver; and younger teenagers may rely mainly on clinics for prenatal care, whereas older teenagers may be more likely to seek services from private doctors.

Variables

One of the principal variables of interest is whether the young woman had intended to conceive. Respondents were asked “When you became pregnant, would you say you wanted to get pregnant at that time, you didn’t want to get pregnant, or you didn’t care one way or the other?” This was followed by an open-ended question asking the young woman why her intention had been as she described it. On the basis of their responses to these two questions, respondents were classified into three groups—those who had intended to become pregnant, those who had not intended the pregnancy and those who had not cared one way or the other.

The analyses also included demographic variables (age, race, ethnicity and, for Hispanic women, nativity) and a variety of socioeconomic and psychosocial variables. We assessed young women’s living and familial situations by asking whether they had lived with their biological parents at the time they conceived, whether they currently lived with their unborn baby’s father, whether they had moved in the past year and whether they received public assistance (through Medi-Cal, Aid to Families with Dependent Children or the Special Supplemental Food Program for Women, Infants and Children). Several questions explored respondents’ educational and employment status and life aspirations: whether they were currently in school and, if not, whether they had dropped out before or after learning of their pregnancy; whether they would have desired to go to college if nothing stood in their way; whether they expect that they will go to college; whether they had participated in any extracurricular activities or had been employed in the past year; and whether they had and could articulate any life plans or aspirations. We categorized participants as having high aspirations if their plans included education- or employment-related goals and as having other aspirations if their goals included only family or children.

Another set of variables relates to young women’s experiences after they learned of their pregnancy: whom they talked to, what options they considered and why they chose to have the baby. Several items gauge the respondent’s current and past relationship with the baby’s father, as well as gathering key data about him—his age, race or ethnicity, education and employment, and whether he has fathered other children. Finally, information on young women’s experiences with contraception and contraceptive services was gathered.

Table 1. Percentage distribution of of pregnant 15–18-year-old women in four California counties who intend to carry their pregnancy to term, by race/ethnicity and by age; and percentage distribution of births to 15–18-year-olds, by race/ethnicity and by age, the four study counties, California and the United States, 1995

Population	N	Total	Race/ethnicity					Age	
			Hispanic		White	Black	Asian*	15–16	17–18
			U.S.-born	Foreign-born					
Pregnant women	187	100.0	35.3	28.9	7.0	24.6	4.3	48.1	51.9
Births to teenagers in:									
Study counties	3,746	100.0	32.1 [†]	26.2 [†]	18.1	16.7	6.8	29.2	70.8
California	43,838	100.0	34.2	28.3	21.0	11.0	5.4	29.1	70.9
United States	331,043	100.0	9.4 [‡]	15.1 [‡]	44.1	28.2	3.3	28.1	71.9

*Includes Pacific Islanders and American Indians. [†]The distribution of Hispanic births by nativity in the study counties is an estimate based on the distribution at the state level for births to Hispanic teenagers aged 15–16 and 17–18 separately. [‡]The distribution of Hispanic births by nativity in the United States is an estimate based on the distribution of births to all women. *Note:* The four study counties are Alameda, Santa Clara, Santa Cruz and Monterey. *Sources:* **United States**—Ventura SJ et al., Report of final natality statistics, 1995, *Monthly Vital Statistics Report*, 1997, Vol. 45, No. 11, Suppl. **California and study counties**—California Department of Health Services, Maternal and Child Health Branch.

Analytic Techniques

We used one-tailed z-tests to examine the statistical significance of bivariate differences between young women who intended pregnancy and those who did not. We also performed multinomial regression using STATA to assess predictors of pregnancy intention status. Because the dependent variable has three categories, this procedure is preferable to logistic regression. The multivariate model included the demographic variables and several variables that were significantly related to intention at the bivariate level.

Findings

Young Women's Characteristics and Aspirations

Although the women had diverse backgrounds and experiences, a common theme was turmoil in their lives. Few lived in intact families, most had moved recently, many had not attended school regularly prior to becoming pregnant and a large majority depended on public assistance, at least to pay the medical costs of their pregnancy (Table 2, page 10).

About half of respondents reporting recent moves mentioned that the move was related to their pregnancy or to their relationship with their baby's father (not shown). The other half described complicated living situations and movement between parents, grandparents, siblings and friends that was often related to financial problems, crowded living conditions, interpersonal conflict, and behavioral or substance abuse problems (either their own or among the people around them). Of the 44% of respondents who had dropped out of school prior to their pregnancy, many had had problems at school, had dropped out because of recent moves or had had a constellation of personal, family or financial issues that kept them from attending school regularly (not shown).

A majority of respondents had had high goals for their education or life plans. However, many did not now expect to reach those goals, and a sizable minority (24%) had no life plans that they could articulate. During the year prior to their pregnancy, 58% of young women had participated in one or more extracurricular activities, such as performing arts, church youth groups or sports.

In these young women's circles, early childbearing is not uncommon. Nearly seven in 10 had close friends or teenage siblings who were pregnant or already had children. In addition, many respondents reported social alienation or unhealthy past or present dating relationships. Ten percent had no close friends, and 47% had been in a controlling or abusive relationship, either prior to or with their baby's father.

Women's Pregnancy Intentions

Some 32% of respondents had intended to become pregnant, 25% had not cared and 43% had not intended to become pregnant. These proportions differ widely according to women's age and race or ethnicity: Only 22% of 15–16-year-olds had intended to conceive, compared with 36% of 17–18-year-olds; the proportion was 14% among black women, 34% among U.S.-born Hispanic respondents and 46% among foreign-born Hispanic young women (Figure 2, page 11). Thus, comparing young women who had intended pregnancy with those who had not reveals wide variation in demographic and background characteristics (Table 2). Participants who had intended to conceive were more likely than those who had not to be older (80% vs. 65%) and of foreign-born Hispanic origin (41% vs. 16%).*

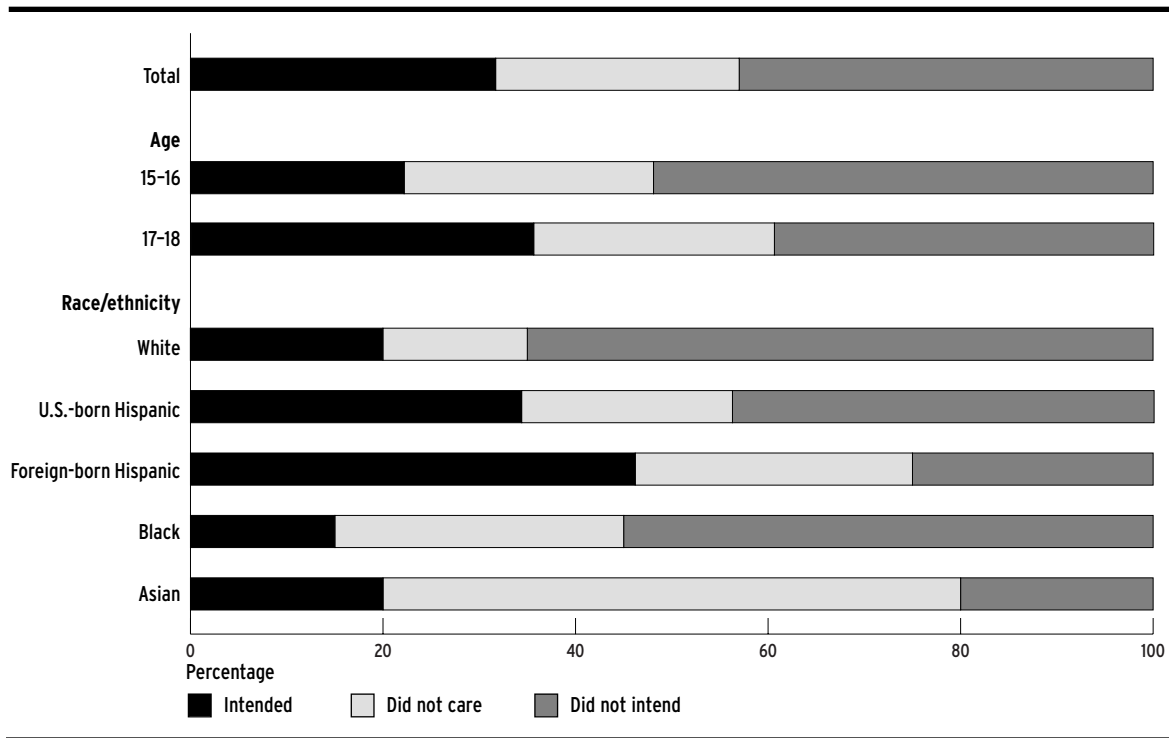
*These are weighted percentages and cannot be calculated from the unweighted Ns reported in Table 2.

Table 2. Percentage distribution of respondents, by age and by race/ethnicity; and percentage, by selected characteristics—all according to pregnancy intention at conception

Characteristic	Total (N=187)	Intended (N=52)	Did not care (N=50)	Did not intend (N=85)
Age				
15–16	29.0	20.3	29.8	35.0*
17–18	71.0	79.7	70.2	65.0*
Race/ethnicity				
Hispanic	62.5	78.1	62.2	51.2***
U.S.-born	34.2	36.8	29.7	35.1
Foreign-born	28.3	41.3	32.5	16.1***
Black	11.0	5.0	13.2	14.2*
White	21.0	12.8	11.9	32.4**
Asian	5.4	4.1	12.7	2.2
Living situation at conception				
Living with at least one parent	61.2	49.4	60.9	69.9**
Living with both parents	24.2	26.2	24.0	22.8
Living with mother only	32.5	22.4	30.0	41.3*
Mobility				
Moved in past year	64.2	66.9	61.8	63.7
Public assistance received				
Medi-Cal	86.1	87.4	92.5	81.4
WIC benefits	69.2	74.3	71.2	64.3
AFDC benefits	13.2	19.3	6.2	12.8
Education				
Currently in school	49.4	41.7	50.6	54.3
Dropped out prior to pregnancy	43.5	54.3	45.3	34.5*
Would go to college if				
nothing in way	71.2	57.2	68.5	82.7***
Expect to go to college	44.7	34.4	39.5	55.1**
Extracurricular activities and employment				
Participated in any				
extracurricular activities	58.3	48.4	56.6	66.5*
Employed in past year	69.5	61.5	65.8	77.5*
Life plans				
High aspirations	56.4	32.7	59.5	71.9***
Other aspirations	19.2	23.2	24.9	13.0
No life plans	24.4	44.2	15.6	15.1***
Peer relationships				
Have no close friends	10.4	19.4	3.8	7.8*
Have close friend/sibling				
who is expecting/has children	68.7	61.0	77.4	69.2
Girlfriend is expecting	30.3	34.8	29.2	27.5
Girlfriend has children	36.9	23.2	39.5	45.3**
Male friend has children	20.4	10.6	16.6	29.8**
Sister was teenage mother	22.3	32.5	23.2	14.3**
Partner relationships				
Ever in controlling/				
abusive relationship	47.3	55.5	41.0	45.0
Ever had a partner who:				
Kept her from doing things	30.2	45.3	19.4	25.5**
Refused to use birth control	10.1	13.6	5.6	10.2
Hit or injured her	20.1	32.8	19.5	11.2***
Ever been raped	13.0	15.8	8.0	13.8

*Difference between those who intended the pregnancy and those who did not intend the pregnancy is significant at $p < .05$. **Difference between those who intended the pregnancy and those who did not intend the pregnancy is significant at $p < .01$. ***Difference between those who intended the pregnancy and those who did not intend the pregnancy is significant at $p < .001$. Note: Ns are unweighted; percentages are weighted by statewide age and race/ethnicity distribution.

Figure 2. Percentage distribution of respondents, by pregnancy intention at conception, according to age and race/ethnicity



Moreover, young women who had intended pregnancy had greater social and economic disadvantage than those who had not. For example, at the time they conceived, they were less likely to be living with a biological parent (49% vs. 70%), more likely to have dropped out of school (54% vs. 35%) and less likely to have recently been employed (62% vs. 78%). They also had lower expectations for their education and life plans. Only 33% of those who had intended to conceive had had high aspirations, compared with 72% of those who had not intended to become pregnant; 44% and 15%, respectively, had had no life plans. Finally, compared with participants who had not planned to become pregnant, those who had intended to conceive were more likely to have no close friends, to have a sister who had been a teenage mother (but not to have a friend in that situation) and to have been in a relationship with a controlling or abusive partner.

How Women Explain Their Pregnancy Intention

Of those who had wanted to become pregnant, more than half gave reasons that reflected their desire for a baby—e.g., “I like babies, having something that’s mine,” “I like children a lot, and at least with that, I will entertain myself” and “It’s weird, but something or someone is telling me to have a baby. My mom can’t take care of me, so I will have one to be a better mom and show her how to take care of her kids.” Nearly a

third gave reasons related to the desires or perceived desires of the baby’s father (e.g., “He wanted me to get pregnant, and I was willing”), and nearly one in four said that the “time was right” to begin their family.

The majority (62%) of those who had not intended to become pregnant said simply that they had not wanted or were not ready to have a baby; others explained that they had felt a baby would interfere with their goals or that their life or financial situation was too unstable to support a baby.

Those who had not cared about becoming pregnant could not provide clear reasons for that feeling. Some said that they had had mixed feelings about becoming pregnant or that they had wanted to become pregnant, but not yet. Others responded that they considered pregnancy inevitable, it just did not matter either way, they did not know what they wanted or they had never thought about it. One young woman commented, “It just happened. I didn’t think about it, he didn’t think about it. It’s not like we cared a lot. . . . We’ve been together two years, and I haven’t gotten pregnant and we’ve had unprotected sex.”

Many assumed that they would not get pregnant because they had not become pregnant during past unprotected sex. They combined their belief (and fear) that they might be infertile with a fatalistic view about life and pregnancy—and, in this way, rationalized their pregnancy and childbearing as something that was “meant to be.”

Observed and Anticipated Benefits of Childbearing

To explore the motivations associated with different pregnancy intentions, we asked the women what they observed and expected to be the advantages of youthful childbearing. Nearly half of those with friends who were parents mentioned that young mothers were forced to become more mature and stable. For example, one woman replied, “The best thing [for my friend] was she stopped doing the bad stuff, like drugs and gang-banging.” About one respondent in 10 anticipated gaining maturity and stability after giving birth. Reported benefits of youthful childbearing also included family, love, responsibility and a better relationship with the baby’s father.

Native-born Hispanic and black women were more likely than other women to mention maturity and stability as observed or anticipated advantages of youthful childbearing, while foreign-born Hispanic adolescents were more likely than others to mention love, family and a better relationship with the baby’s father.

Relationship with the Baby’s Father

At the time they conceived, 98% of these young women were in steady dating relationships with or were engaged to their baby’s father (Table 3). On average, they had been dating for more than a year and were about three and a half years younger than the father.

Although only one-third of the young women had wanted to become pregnant, about half reported that their partner had wanted them to conceive. Roughly one in four thought that their partner had not wanted them to become pregnant, and a similar proportion thought that he had not cared. In all, 27% of respondents reported that both they and their partner had wanted to get pregnant, 19% reported that neither had wanted the pregnancy and the rest reported mixed or ambivalent intentions (mostly that the baby’s father had the greater preference for having a baby—not shown).

Compared with young women who had not intended to become pregnant, those who had wanted a pregnancy had older partners (on average, 22 vs. 20 years) and reported a greater age difference between themselves and their partners (five years vs. three). They also were more likely to be living with their baby’s father at the time of the interview (56% vs. 20%), to think that they are “very likely” to marry in the next few years (73%

vs. 39%) and to report that their partner had intended the pregnancy (84% vs. 28%).

Multivariate Analysis to Predict Intention Status

The multinomial regression analysis assessed the influence of a variety of characteristics on women’s risk of having intended to become pregnant vs. having not intended to conceive and their risk of having intended pregnancy vs. having not cared (Table 4). Two sets of results are reported—one including and one excluding the effects of the father’s pregnancy intentions. Because of the small sample size and exploratory nature of this analysis, significance is reported for relative risk ratios up to the .10 level.

When father’s pregnancy intentions were excluded, the analysis comparing young women who had intend-

Table 3. Selected measures reflecting characteristics of respondents’ relationship with their baby’s father and the father’s characteristics, by pregnancy intention at conception

Measure	Total	Intended	Did not care	Did not intend
PERCENTAGES				
Relationship with the father				
Dating/engaged before pregnancy	97.7	99.4	100.0	95.1
Only steady relationship ever	48.5	48.7	57.3	43.3
Living together at the time of interview	38.0	55.9	47.3	19.8***
Think marriage is “very likely” in next few years	54.3	73.4	56.3	39.0***
Reasons for first sex with the father				
Planned to marry him	57.5	71.3	66.9	42.0***
Wanted baby	24.8	51.2	25.1	5.3***
Father’s background characteristics				
Employed	71.5	70.9	77.7	68.2
H.S. graduate	47.6	39.1	50.5	51.8
Has other children	16.9	17.0	6.5	23.0
Father’s pregnancy intention at conception				
Intended	52.1	84.3	53.0	27.8***
Did not care	22.6	9.0	29.6	28.8**
Did not intend	25.2	6.6	17.4	43.4***
MEANS				
Mos. of dating before conception	13.5†	13.6	16.7	11.6
Father’s age	20.5‡	21.7	20.2	19.8***
Age difference between partners (yrs.)	3.6‡	4.6	3.4	3.1**

Difference between those who intended the pregnancy and those who did not intend the pregnancy is significant at p<.01. *Difference between those who intended the pregnancy and those who did not intend the pregnancy is significant at p<.001. †Standard deviation is 12.5 months. ‡Standard deviation is 3.0 years. Note: Percentages are weighted by statewide age and race/ethnicity distribution.

Table 4. Relative risk ratios from multinomial regressions showing the likelihood that women intended to become pregnant versus had other intentions, by selected characteristics

Characteristic	Model I		Model II	
	Intended vs. did not intend	Intended vs. did not care	Intended vs. did not intend	Intended vs. did not care
Age				
15–16	rc	rc	rc	rc
17–18	2.09	1.94	1.97	1.73
Race/ethnicity/nativity				
White/Asian	rc	rc	rc	rc
U.S.-born Hispanic	2.81†	2.19	2.64	2.19
Foreign-born Hispanic	6.65**	2.29	7.23**	2.72
Black	1.49	0.98	1.34	1.0
Lived with a parent prior to pregnancy				
Yes	rc	rc	rc	rc
No	2.21†	1.45	2.23†	1.39
Has any close friends				
Yes	rc	rc	rc	rc
No	2.11	4.83†	3.26	6.13*
Articulated any life plans				
Yes	rc	rc	rc	rc
No	5.52***	5.28**	4.18**	4.38**
Ever in controlling/abusive relationship				
Yes	2.76*	2.86*	3.50*	3.53*
No	rc	rc	rc	rc
Age of baby's father				
15–19	rc	rc	rc	rc
≥20	2.63*	2.24†	1.95	1.85
Father's pregnancy intentions				
Did not want/care	na	na	rc	rc
Wanted	na	na	14.72***	5.83***
χ^2	56.5		91.1	
Log likelihood	-168.163		-50.873	
R ²	0.144		0.232	

*p<.05. **p<.01. ***p<.001. †p<.10. Notes: rc=reference category. na=not applicable.

ed pregnancy with those who had not revealed that foreign-born Hispanic teenagers were nearly seven times as likely as their white and Asian counterparts to have wanted the pregnancy (risk ratio, 6.7). The likelihood of having intended the pregnancy was also elevated among women who had had no plans for their life (risk ratio, 5.5), women who had ever been in a controlling or abusive relationship (2.8) and those whose baby's father was aged 20 or older (2.6).

Risk ratios associated with having had no life plans and having been in an abusive relationship changed little when young women who had intended pregnancy were compared with those who had not cared. In this comparison, the ratio associated with having a partner who was at least 20 years old diminished slightly and was only marginally significant; race and ethnicity had

no independent association with intention status.

In the analyses including the father's intentions, young women who reported that their partner had wanted them to get pregnant were nearly 15 times as likely as others to have intended the pregnancy (as opposed to having not intended it). The effects of foreign-born Hispanic ethnicity, having had no life plans and having ever been in an abusive relationship remained strong and significant, but partner's age was no longer associated with intention status.

The effect of partner's pregnancy intentions on young women intending pregnancy compared with those who had not cared was significant, but not nearly as strong as in the prior comparison. Additionally, young women with no close friends had an elevated likelihood of having intended the pregnancy.

Table 5. Percentage of respondents by selected measures related to contraceptive use, according to pregnancy intention at conception

Measure	Total	Intended	Did not care	Did not intend
Ever-use				
Ever used any method	80.3	70.7	76.8	89.5**
Ever received services from clinic/MD	66.5	72.0	63.2	64.5
Ever used oral contraceptives	36.5	37.9	20.8	44.6
Ever used condoms	75.8	64.8	70.7	86.9**
Use during conception month				
Used method	37.0	17.6	32.0	54.6***
Reported probable user failure	24.3	11.0	22.5	35.5***
Reported probable method failure	12.7	6.7	9.5	19.1*
Used no method	63.0	82.4	68.0	45.5***
Reasons for nonuse (among nonusers)				
Respondent desired pregnancy	23.9	57.2	0.0	0.0***
Never thought/talked about use	18.5	7.2	24.4	28.6**
Baby's father desired pregnancy	18.3	34.6	11.4	2.2
Thought use unnecessary	17.7	18.0	26.8	9.0
Did not like/had problems with methods	17.0	26.3	13.5	7.5**
Forgot/was careless	14.6	1.6	11.5	35.2***
Did not know about/have methods	9.3	0.0	10.8	20.5***

*Difference between those who intended the pregnancy and those who did not intend the pregnancy is significant at $p < .05$. **Difference between those who intended the pregnancy and those who did not intend the pregnancy is significant at $p < .01$. ***Difference between those who intended the pregnancy and those who did not intend the pregnancy is significant at $p < .001$. Note: Percentages are weighted by statewide age and race/ethnicity distribution.

Contraceptive Use

Overall, 80% of respondents had ever used a method of contraception, and 67% had received contraceptive methods or information from a clinic or doctor; however, 63% had used no method during the month in which conception occurred (Table 5). Some 24% attributed the pregnancy to their failure to use a method or inconsistent method use during the month of conception (user failure); 13% said that it had resulted from method failure (i.e., they had used their method consistently during the month they conceived, or they had used a condom that broke).

Levels of contraceptive use and reasons for nonuse varied considerably according to whether the young woman had planned to conceive. Those who had intended to get pregnant were less likely than those who had not to have ever used a contraceptive method (71% vs. 90%), to have ever used condoms (65% vs. 87%) and to have used a method during the month of con-

ception (18% vs. 55%). Among women who had wanted to become pregnant, the most often cited reason for nonuse was their own or their partner's desire to become pregnant.

One-third of teenagers who had not cared about getting pregnant had used contraceptives during the month of conception. The most common reason this group cited for nonuse (mentioned by 27%) was that they thought use was unnecessary—often because they were in monogamous relationships and not worried about STDs, or because they had had unprotected sex in the past without becoming pregnant. Almost the same proportion (24%) said that they had never thought about using a method or talked about it with their partners. Typical responses regarding nonuse included “Never thought about it; it’s not comfortable, so we didn’t use it and we trusted each other [not to have a disease]” and “Once, we were having sex and the condom broke, and after that we stopped using condoms. We were both tested for STDs, and pregnancy was the farthest thing from my mind.”

Among those not intending to become pregnant, 55% had used a contraceptive method during the month that conception occurred: Some 19% had used a method that failed, but 36% had skipped using their method at the time conception was likely to have occurred. The reason most often cited for nonuse among this group was that they had been careless or had forgotten to use a method (35%). Other common reasons

were that they had never thought about using a method or discussed it with their partner, and they lacked access to or information about contraceptives.

Reactions and Communication Patterns

Respondents had had a wide range of emotional reactions upon learning of their pregnancy, and they had confided in and discussed their options for dealing with it with both family members and peers. Four in 10 (42%) said they had had only negative feelings—including anger, fright, confusion, worry, shock and sadness—upon learning about the pregnancy (Table 6). About one in four (27%) had had only positive reactions, mostly happiness and excitement. Nearly as many (24%) reported mixed emotional responses; they had been “happy and sad and confused and scared,” all at the same time. As might be expected, young women who had intended to become pregnant were the most likely to report only positive emotional reactions

Table 6. Percentage of respondents, by selected measures related to reactions to and communication about the pregnancy, according to pregnancy intention at conception

Measure	Total	Intended	Did not care	Did not intend
Respondent's reaction				
Positive only	27.4	58.5	29.4	3.3***
Negative only	41.8	16.3	45.8	58.1***
Mixed	23.9	23.4	19.1	27.1
Neutral	6.6	1.8	5.7	10.7*
Told someone that day	76.8	85.7	85.2	65.2**
First person told				
Baby's father	42.4	49.4	58.2	28.0**
Mother	16.8	21.7	10.2	17.0
Girlfriend	16.2	8.6	17.2	21.1*
Other	24.6	20.2	14.4	33.8*
Baby's father's reaction				
Very happy initially	66.5	87.2	67.1	50.0***
Very happy now	81.3	99.1	89.7	61.7***
Support from baby's father				
Father has come to prenatal care visits	54.3	58.7	50.6	53.2
Expect father to be at delivery	80.4	91.7	95.0	62.5***
Relationship with baby's father				
Dating/engaged at interview	74.7	90.5	89.1	54.7***
Think marriage very likely	54.3	73.4	56.3	39.0***
Mother's reaction				
Positive, as expected	16.4	31.2	9.2	8.9***
Negative, as expected	30.3	25.7	34.7	31.5
More positive than expected	38.3	25.4	44.1	45.2*
Neutral/other	14.9	17.7	11.9	14.4
Mother now very supportive	80.7	73.8	77.6	87.5*
Father's reaction				
Positive, as expected	11.2	20.1	14.9	1.1***
Negative, as expected	40.2	24.2	47.6	50.2**
More positive than expected	30.7	22.4	30.2	38.4*
Neutral/other	17.8	33.3	7.3	10.2***
Father now very supportive	61.8	52.2	68.9	65.1
Combined reactions of parents and baby's father				
All positive	11.7	15.8	6.9	11.5
Only parents positive	12.3	3.1	11.3	19.7**
Baby's father and one parent positive	23.7	32.0	12.4	24.2
Baby's father only positive	34.9	41.5	49.0	21.8**
No one positive	17.4	7.7	20.4	22.8*
Felt comfortable telling friends	76.3	86.8	82.1	64.8**
Relationship with friends negatively affected				
	27.7	20.6	36.2	27.9

*Difference between those who intended the pregnancy and those who did not intend the pregnancy is significant at $p < .05$. **Difference between those who intended the pregnancy and those who did not intend the pregnancy is significant at $p < .01$ ***Difference between those who intended the pregnancy and those who did not intend the pregnancy is significant at $p < .001$. Note: Percentages are weighted by statewide age and race/ethnicity distribution.

(59%), while those who had not intended to conceive were the most likely to report only negative reactions (58%).

In all, 77% of young women told someone else about the pregnancy the same day that they learned of it; this proportion was higher among women desiring pregnancy (86%) than among those who became pregnant accidentally (65%). The baby's father was generally the first to be told (42%); again, the proportion was higher for those who had intended their pregnancies (49%) than for those who had not (28%).

Two-thirds (67%) of respondents reported that their partner was very happy when he first learned of the pregnancy; 81% said that he was very happy about the pregnancy now and 80% expected him to be at the baby's delivery. Women who had intended to become pregnant were significantly more likely to give these responses than were those who had not. Additionally, while 75% of all respondents were still dating or engaged to the baby's father at the time of the interview and 54% thought they were likely to get married, these proportions were considerably higher among participants who had wanted to conceive than among those whose pregnancy had been unintended.

Seventeen percent of respondents told their mothers about the pregnancy before telling anyone else;* 52% told their mothers within a month of learning that they were pregnant (not shown). Sixteen percent expected and received a positive reaction from their mothers, and 38% received a more positive reaction than they had expected; often, the mother unexpectedly supported the teenager, instead of scolding or disowning her.

Thirty percent of young women both expected and received a negative reaction from their mothers. They reported that their mothers were shocked, sad, emotional or upset. One respondent said her mother told her "what a stupid fool" she was. Nevertheless, at the time of the interview, 81% of mothers were reported to be very supportive of their

*Respondents who did not live with or have regular contact with their mothers were asked if they had an alternative "mother figure." Eighty-two percent of respondents referred to their biological mothers, and 13% to "mother figures"; 5% had neither a mother nor a "mother figure" and are excluded from these calculations.

Table 7. Percentage distribution of respondents, by selected measures related to pregnancy decision-making, according to pregnancy intention at conception

Measure	Total	Intended	Did not care	Did not intend
Initial reaction				
Was sure about keeping baby	64.2	84.6	77.8	41.2***
Needed time to decide what to do	35.8	15.3	22.9	58.8***
Reasons for wanting to keep the baby				
Wanted/accepted having baby	46.2	71.2	51.1	25.0***
Against abortion/adoption	31.5	10.2	24.4	51.3***
Wanted/accepted baby and against abortion/adoption	19.0	15.3	20.0	21.3
Baby's father/others wanted baby	3.3	3.4	4.4	2.5
Option respondent favored most at first				
Birth and marry/live with father	50.6	77.8	63.9	22.9***
Birth and live with family/on own	40.0	21.3	34.3	57.1***
Abortion	4.9	0.0	1.8	10.4**
Adoption	2.4	0.8	0.0	5.0
No preference	2.0	0.0	0.0	4.6
Option baby's father favored most at first				
Birth and marry/live with him	70.9	80.4	71.4	62.6*
Birth and live with her family/on own	14.7	13.7	12.2	17.1
Abortion	13.0	6.0	12.0	19.6**
Adoption	0.0	0.0	0.0	0.0
No preference	1.4	0.0	4.3	0.7
Who helped most with decision to continue				
Baby's father	33.6	40.8	45.1	21.5**
Respondent made the decision herself	23.1	15.2	23.1	28.9*
Respondent's mother	20.1	17.2	10.4	27.9
Other relative	14.5	15.3	17.3	12.3
Clinic/church/school staff	5.1	9.7	0.0	4.7
Friends	3.6	1.8	4.2	4.6
Total	100.0	100.0	100.0	100.0

*Difference between those who intended the pregnancy and those who did not intend the pregnancy is significant at $p < .05$. **Difference between those who intended the pregnancy and those who did not intend the pregnancy is significant at $p < .01$. ***Difference between those who intended the pregnancy and those who did not intend the pregnancy is significant at $p < .001$. Note: Percentages are weighted by statewide age and race/ethnicity distribution.

pregnant daughters.

In general, fathers both were expected to have and had more negative reactions to their daughters' pregnancies than mothers.* However, 31% of fathers had more positive reactions than the young women expected, and 62% were reportedly very supportive at the time of the interview.

Teenagers who had wanted to become pregnant

were much more likely than those whose pregnancy had been unintended to report expecting and receiving a positive reaction from both their mothers (31% vs. 9%) and their fathers (20% vs. 1%).

Overall, 12% of women said that both of their parents and the baby's father had reacted positively when told about the pregnancy. A majority reported positive reactions from either the baby's father alone (35%) or the baby's father and one parent (24%). Some 17% reported no positive reactions from either of their parents or their baby's father; 23% of those with an unintended pregnancy gave this response, compared with 8% of those who had wanted to conceive.

Seventy-six percent of respondents had felt comfortable telling their friends about their pregnancy; however, 28% said that it had negatively affected their relationship with one or more friends. Those who had desired pregnancy were more likely than those whose pregnancy had been unintended to have felt comfortable telling their friends about it (87% vs. 65%).

Decision-Making

• *Choosing to give birth.* When they first learned that they were pregnant, 64% of respondents were "very sure about wanting to keep the baby"; 36% "needed some time to think about what...to do" (Table 7). Only 15% of those who had intended the pregnancy responded that they needed time to think about whether they would keep the baby, compared with 59% of those who had not intended to become pregnant.

When asked why they had decided to keep the baby, 46% reported only reasons related to wanting or accepting motherhood (i.e., they wanted a baby, wanted to take responsibility or had support for keeping the baby), 32% reported that they were keeping the baby only because they were against abortion or adoption, 19% reported both wanting the baby and being against abortion and adoption, and 3%

reported that they were keeping the baby only because others wanted them to.

Nearly three out of four adolescents who had intend-

*Respondents who did not live with or have regular contact with their fathers were asked if they had an alternative "father figure." Fifty-six percent of respondents referred to their biological fathers, and 23% to "father figures"; 22% had neither a father nor a "father figure" and are excluded from these calculations.

ed to become pregnant gave only positive reasons for deciding to keep their baby. However, among women who had not intended to get pregnant, only 25% responded this way; 51% reported that they had decided to keep the baby only because they had not wanted to have an abortion or place the child for adoption.

Reported reasons for keeping the baby also differed among young women of different racial and ethnic backgrounds (not shown). Foreign-born Hispanic teenagers most often said they had decided to keep the baby because they had wanted a baby (63%) or someone else, usually the baby's father, had wanted them to have a baby (20%). U.S.-born Hispanic women were equally divided between those who had wanted a baby (49%) and those who did not want to have an abortion (47%); in addition, 26% mentioned that a reason for having the baby was to take responsibility for their mistakes. Black respondents most frequently said that their decision was based solely on unwillingness to have an abortion (63%) and least often reported that it stemmed from their desire to have a baby (28%); black young women were more likely than others to have decided to keep the baby solely because they did not want to have an abortion. Although these differences may be related to young women's prior pregnancy intentions, three-way cross-tabulations indicate that even among women with the same intention, the reasons given for keeping their babies differed according to race or ethnicity (not shown).

The decision to keep the baby was also related to women's perceptions of the advantages and disadvantages of teenage childbearing. In all, 45% of participants described their pregnancy as a meaningful, positive experience (e.g., "This is something good, it's not bad like they say these days, I think it's the best. And, I don't know, maybe it can help me. It means a huge responsibility.... I have to fight to get my child ahead"). Other reported advantages of having a child as a teenager include the love and companionship of a child (15%) and the impetus for self-improvement (15%). One in four respondents felt that having a child as a teenager is an advantage because they will still be young when the child is grown, they will be youthful and energetic mothers, and they will "grow up" with their children and have less of a generation gap (not shown).

• *Birth and residence preferences.* When considering their options after first learning about the pregnancy, 51% of the young women wanted to have their baby and marry or live with the baby's father; 40% wanted to have the baby and live on their own or with their parents (Table 7). Only 7% wanted to have an abortion or place the baby for adoption. By contrast, according to the respondents, 71%

of their partners initially wanted them to have the baby and get married or live together, 15% wanted them to have the baby and live at home or on their own, and 13% wanted them to have an abortion; none of the fathers favored placing the baby for adoption.

The contrast between young women's preferences and those they reported for their partners are even more striking when looked at by pregnancy intention. Respondents who had intended to become pregnant reported high agreement between themselves and the baby's father in their preference for marrying or living together (78% for the young women and 80% for their partners). However, among teenagers who had not intended pregnancy, there was little such agreement: Only 23% of young women preferred this option, compared with 63% of their partners.

• *Social support.* Beside talking to their partners and parents about their pregnancy options, many young women talked with a variety of other people (not shown): clinic staff (56%), friends (45%), and sisters, aunts or other adult relatives (39%). Still, when asked who had helped them the most in making the decision to continue the pregnancy, 23% reported that the decision had been theirs alone; 34% said that the baby's father was the most important in helping to make the decision, 20% said their mother and 15% said another relative was most important (Table 7). Few women considered their friends or staff at a clinic or other facility the most helpful (4–5%).

For young women who had intended the pregnancy or who had not cared, the baby's father helped most with the decision to continue the pregnancy (mentioned by more than 40% of respondents). By contrast, partners were much less helpful to young women who had not intended to become pregnant; these teenagers relied more on themselves (29%) and their mothers (28%) in making the decision.

• *Consideration of abortion.* When asked about the option of abortion, only one in three young women responded that they had even considered it (Table 8, page 18). As expected, teenagers who had not intended their pregnancy were more likely to have considered abortion (47%) than were those who had wanted to conceive (20%).

We asked the women either why they had not considered abortion or why they had decided against it. Most (65%) gave reasons related to opposition to or fear of abortion, 24% gave reasons related to wanting or being resigned to have the baby, 6% said they wanted a baby and were opposed to or afraid of abortion and 5% said that others' desire for them to have a baby and opposition to abortion influenced them. Among those

Table 8. Percentage of respondents, by selected measures related to abortion experience and attitudes, according to pregnancy intention at conception

Measure	Total	Intended	Did not care	Did not intend
Ever considered abortion	32.6	20.0	24.5	46.6***
Reasons abortion not considered/not obtained				
Wanted/was resigned to have baby only	24.4	33.4	29.0	15.4**
Opposed/afraid to have an abortion only	65.2	54.4	63.2	74.0**
Wanted baby and opposed/afraid to have abortion	5.7	5.4	5.5	6.1
Others wanted baby/against abortion only	4.7	6.7	2.3	4.5
Ever had abortion	10.1	8.5	5.1	14.1
Friend ever had abortion	60.1	43.3	55.8	75.1***
Approves of friend's abortion†	46.0	36.4	34.5	55.2*
Perceived abortion accessibility				
Very easy	36.0	23.0	35.2	49.2**
Somewhat easy	28.8	31.7	21.9	30.8
Somewhat difficult	23.9	28.5	30.1	14.9*
Very difficult	11.4	16.8	12.8	5.0*
Major obstacles to abortion				
Too expensive	38.3	34.6	44.7	37.0
Nowhere nearby	14.8	23.0	8.4	12.8
Parents would prevent it	47.3	53.3	40.3	47.0
Difficult personal decision	80.6	86.1	74.2	80.5
Parental consent law	78.7	81.0	66.8	84.1

*Difference between those who intended the pregnancy and those who did not intend the pregnancy is significant at $p < .05$. **Difference between those who intended the pregnancy and those who did not intend the pregnancy is significant at $p < .01$. ***Difference between those who intended the pregnancy and those who did not intend the pregnancy is significant at $p < .001$. †Percentages based on those with a friend who had had an abortion. Note: Percentages are weighted by statewide age and race/ethnicity distribution.

who had not considered abortion, the most important reason was moral opposition, while those who had considered it most commonly had felt that it was not right, given their circumstances (not shown).

Although the fact that few young women even considered abortion was somewhat surprising, it was not totally unexpected, given that nationwide, the proportion of adolescent pregnancies being resolved through abortion is declining.²⁰ However, it raises questions as to why young people are moving away from abortion and what distinguishes young childbearing women who might have opted for abortion from those who would not even consider it.

Most of the teenagers had had some experience with

abortion. Ten percent had had an abortion, and 60% had friends who had had an abortion (Table 8). Young women who had not intended to become pregnant were more likely than those who had desired pregnancy to have friends who had had an abortion (75% vs. 43%). Among those with friends who had had an abortion, 46% approved of that decision. Common reasons given for their disapproval included moral objections to abortion and strong beliefs that irresponsible behavior should be punished. Typical comments included “It wasn’t the baby’s fault; it was their fault” and “If they lay down with a person, they should’ve had a baby.”

Thirty-six percent of respondents believed it was very easy for a teenager to obtain an abortion in the area where they lived, and 29% thought it was somewhat easy. Among young women who had not intended to become pregnant, 80% thought it was at least somewhat easy to get an abortion, and only 5% thought it was very difficult. Thus, perceived lack of access to abortion was rarely a problem among young women who were most likely to have considered abortion.

When asked about specific reasons that might make it difficult for a teenager to get an abortion, 15% said having no provider nearby, 38% cited the cost of the procedure, 47% responded that her parents might stop her and 81% said that it would be a difficult personal decision to make. In addition, 79% thought that if a law were enacted requiring minors to obtain parental consent prior to an abortion, it would present a major obstacle for teenagers seeking abortion.

Discussion

Although the findings from this study are not representative for all childbearing teenagers across the nation or even within California, they illustrate relationships between young women’s characteristics, pregnancy intentions and behavior that are likely to be applicable for a broad group of U.S. teenagers.

One limitation of the study is that it was based on a small sample that is composed primarily of low-income, minority teenagers. Another potential limitation is that retrospectively asking young women about their pregnancy intentions may have resulted in some “adjustment” of intentions based on young women’s current feelings about the pregnancy. However, this study

has an important advantage over many national studies that have asked about women's intention regarding pregnancies that occurred up to several years prior to the interview. Here, intention was explored prior to the birth and the next phase of bonding that occurs as women make the transition to motherhood.

Evidence from this study indicates that while these young women differ according to many background characteristics, in their relationships with the young men who fathered their babies and in the circumstances that led them to conceive, their lives typically reflect a pattern of disadvantage that is likely to have contributed to their pregnancies. Moreover, disadvantage may influence teenage reproductive behavior through multiple mechanisms, and differing theoretical models (e.g., inability to avoid risks²¹ versus rational adaptive strategy²²) may be applicable for different types of women.

For most of the young women in this study, pregnancy was unintended, and childbearing resulted from behaviors and attitudes that may have been directly or indirectly influenced by their disadvantaged backgrounds and their limited expectations for the future (i.e., sexual activity combined with poor or nonexistent contraceptive use, poor communication about contraception, low motivation to avoid pregnancy and personal opposition to abortion). For others, who reported an intended pregnancy, childbearing was a choice based on the young woman's perception of herself, her relationship with her partner and the role of childbearing in her future.

The findings from the multivariate analysis support the hypothesis that many factors that distinguish childbearing teenagers from those who avoid early childbearing also distinguish youth who intend pregnancy from those who conceive unintentionally. Many of the young women who intended pregnancy viewed childbearing positively, as a way of setting a course for their lives—a way to gain maturity and stability. Childbearing may serve as a rational, adaptive strategy for moving from somewhat risky “adolescent” behavior to more stable “adult” roles.

However, the strong association between intended pregnancy and foreign-born Hispanic ethnicity suggests a somewhat different pattern for these young women. They were less likely than other respondents to have been in controlling or abusive relationships and much more likely to have strong support for the pregnancy from the baby's father. This may suggest patterns of early family formation consistent with cultural norms from their homelands. However, given that these young women were also more likely than other groups to have had no life plans or very modest educational or career plans, they may have not yet become

acculturated toward such expectations, been able to access potential opportunities or faced a variety of social, economic or educational barriers that are greater than those faced by native-born teenagers.

The findings suggest that successful interventions will need to be tailored differently for young women, depending on where pregnancy and childbearing fit into their overall life experiences. Teenagers who are trying to become pregnant will not benefit from the same kinds of interventions as those who are not contemplating pregnancy but who may have characteristics that put them at risk for unintended childbearing. And even among adolescents intending pregnancy, different approaches may be necessary, depending upon their reasons for wanting to begin childbearing.

Furthermore, the importance of partners and their influence on young women must be addressed. This study clearly illustrates the significant role that young men and their desires have on the events leading to conception. Partners' intentions were most predictive for young women who had wanted the pregnancy, leading us to suspect that partners were instrumental in shaping the intentions that young women reported for themselves. That these women were more likely than others to have ever been in a controlling relationship indicates a pattern of susceptibility to partner control among some teenagers. Thus, it may be important to assess both women's past relationship experiences and their current relationships, and to counsel them to find ways to define themselves, their goals and their lives independently of their partners.

For the majority of teenagers who are not seeking pregnancy, interventions aimed at improving contraceptive behavior would be most effective. Many of these women do not have an accurate understanding of conception or how to use contraceptives effectively. Many are not comfortable enough with their sexuality to plan ahead, obtain contraceptives or even talk about method use with their partners. Moreover, the passive, fatalistic attitude toward pregnancy and childbearing that many young women express almost assures that many will conceive. Simple, accurate education about conception and effective contraceptive use is clearly needed, as are programs to improve young women's self-esteem, assertiveness and ability to take greater responsibility for their lives and their futures.

Targeted interventions are needed for teenagers with characteristics that may predispose them to want to become pregnant. These characteristics include dropping out of school, having no plans or goals for their lives, having been in a controlling or abusive relationship and not having a good familial or social network. Since

young women of Hispanic ethnicity and foreign nativity are overrepresented among teenagers who intend pregnancy, special attention should be given to designing specific, culturally appropriate approaches. For others with these risk factors, who may seek childbearing as a way of bringing stability, purpose and love into their lives, alternative paths are needed. Broad social interventions that can address the lack of love and family that many young people feel have the potential to reduce teenage childbearing among young women who seek to bear children.

Finally, many of the young women in the sample who had not intended pregnancy reported attitudes and beliefs about abortion that preclude serious consideration of this option. Consequently, efforts to improve abortion access in these counties are unlikely to have much effect on the proportion of pregnant teenagers choosing abortion. This makes it all the more important to improve contraceptive access and to emphasize the counseling of youth about effective contraceptive use and pregnancy prevention. Such a course will help to reduce the number of teenagers who find themselves in a position that can result only in their “choosing” to bear an unintended child.

References

1. Henshaw SK and Kost K, Parental involvement in minors' abortion decisions, *Family Planning Perspectives*, 1992, 24(5): 196–207 & 213.
2. Berger DK et al., Hispanic adolescent pregnancy testers: a comparative analysis of negative testers, childbearers and aborters, *Adolescence*, 1991, 26(104):951–962; Cooksey EC, Factors in the resolution of adolescent premarital pregnancies, *Demography*, 1990, 27(2):207–218; and Murry VM, An ecological analysis of pregnancy resolution decisions among African American and Hispanic adolescent females, *Youth and Society*, 1995, 26(3):325–350.
3. Ibid.; and Resnick MD, Adolescent pregnancy options, *Journal of School Health*, 1992, 62(7):298–303.
4. Ventura SJ, Curtin SC and Mathews TJ, Teenage births in the United States: national and state trends, 1990–96, Hyattsville, MD: National Center for Health Statistics, 1998; The Alan Guttmacher Institute (AGI), Teenage pregnancy: overall trends and state-by-state information, New York: AGI, 1999; and Ventura SJ, Mathews TJ and Curtin, Declines in teenage birthrates 1991–98: update of national and state trends, *National Vital Statistics Reports*, 1999, Vol. 47, No. 26.
5. California Department of Finance, *Race/Ethnic Population with Age and Sex Detail, 1970–2040*, Sacramento: California Department of Finance, 1998.
6. Kirby D, *No Easy Answers: Research Findings on Programs to Reduce Teen Pregnancy*, Washington, DC: National Campaign to Prevent Teen Pregnancy, 1997; Miller BC, Risk factors for adolescent nonmarital childbearing, in: Department of Health and Human Services (DHHS), *Report to Congress on Out-of-Wedlock Childbearing*, Hyattsville, MD: DHHS, 1995, pp. 217–227; and Moore KA et al., *Adolescent Sex, Contraception, and Childbearing: A Review of Recent Research*, Washington, DC: Child Trends, 1995.
7. Trent K and Crowder K, Adolescent birth intentions, social disadvantage, and behavioral outcomes, *Journal of Marriage and the Family*, 1997, 59(3):523–535; and Furstenburg FF Jr., As the pendulum swings: teenage childbearing and social concern, *Family Relations*, 1991, 40(2):127–138.
8. Geronimus AT, Teenage childbearing and social and reproductive disadvantage: the evolution of complex questions and the demise of simple answers, *Family Relations*, 1991, 40(4):463–471; and Geronimus AT, Teenage childbearing and social disadvantage: unprotected discourse, *Family Relations*, 1992, 41(2):244–248.
9. Henshaw SK, Unintended pregnancy in the United States, *Family Planning Perspectives*, 1998, 30(1):24–29 & 46.
10. Zabin LS, Astone NM and Emerson MR, Do adolescents want babies? the relationship between attitudes and behavior, *Journal of Research on Adolescence*, 1993, 3(1):67–86.
11. Adler NE and Tschann JM, Conscious and preconscious motivation for pregnancy among female adolescents, in: Lawson A and Rhode DL, eds., *The Politics of Pregnancy: Adolescent Sexuality and Public Policy*, New Haven: Yale University Press, 1993, pp. 14–58.
12. Zabin LS, Hirsch MB and Boscia JA, Differential characteristics of adolescent pregnancy test patients: abortion, childbearing and negative test groups, *Journal of Adolescent Health Care*, 1990, 11(2):107–113; Kenny JW, Reinholtz C and Angelini PJ, Ethnic differences in childhood and adolescent sexual abuse and teenage pregnancy, *Journal of Adolescent Health*, 1997, 21(1):3–10; Plotnick RD, The effects of attitudes on teenage premarital pregnancy and its resolution, *American Sociological Review*, 1992, 57(6):800–811; Manlove J, The influence of high school dropout and school disengagement on the risk of school-age pregnancy, *Journal of Research on Adolescence*, 1998, 8(2):187–200; Wu L, Effects of family instability, income, and income instability on the risk of a premarital birth, *American Sociological Review*, 1996, 61(3):386–405; and Moore KA et al., Nonmarital school-age motherhood: family, individual and school characteristics, *Journal of Adolescent Research*, 1998, 13(4):433–457.
13. Henshaw SK and Van Vort J, Abortion services in the United States, 1991 and 1992, *Family Planning Perspectives*, 1994, 26(3):100–106 & 112.
14. Sollom T, Gold RB and Saul R, Public funding for contraceptive, sterilization and abortion services, 1994, *Family Planning Perspectives*, 1996, 28(4):166–173.
15. Henshaw SK, 1998, op. cit. (see reference 9).
16. Henshaw SK and Van Vort J, Teenage abortion, birth and pregnancy statistics: an update, *Family Planning Perspectives*, 1989, 21(2):85–88.
17. Henshaw SK, Teenage abortion, birth and pregnancy statistics by state, 1988, *Family Planning Perspectives*, 1993, 25(3):122–126.
18. Henshaw SK, Teenage abortion and pregnancy statistics by state, 1992, *Family Planning Perspectives*, 1997, 29(3):115–122.
19. Ventura SJ, Mathews TJ and Curtin SC, Declines in teenage birth rates, 1991–1997: national and state patterns, *National Vital Statistics Reports*, 1998, Vol. 47, No. 12.
20. Henshaw SK, 1998, op. cit. (see reference 9); Henshaw SK and Van Vort J, 1989, op. cit. (see reference 16); Henshaw SK, 1993, op. cit. (see reference 17); and Henshaw SK, 1997, op. cit. (see reference 18).
21. Miller BC, 1995, op. cit. (see reference 6); and Moore KA et al., 1995, op. cit. (see reference 6).
22. Trent K and Crowder K, 1997, op. cit. (see reference 7); and Furstenburg FF Jr., 1991, op. cit. (see reference 7).

Appendix

- **Appendix Tables 1-6**

These tables provide data on the same measures as Tables 2, 3 and 5–8, according to age, race/ethnicity and county of residence.

- **Appendix Table 7**

This table provides additional data grouped by questionnaire item number, according to pregnancy intention at conception, age, race/ethnicity and county of residence.

- **Survey questionnaire (English version)**

The Spanish version of the questionnaire is available on request.

Appendix Table 1. Percentage of respondents, by selected characteristics, according to age, race/ethnicity and county of residence. UNWEIGHTED.

Characteristic	State-weighted Total (N=187)	Unweighted Total (N=187)	Age		Race/ethnicity*			County		
			15-16 (N=90)	17-18 (N=97)	Hispanic U.S.-born (N=66)	Hispanic Foreign (N=54)	Black (N=46)	Alameda (N=78)	Santa Clara (N=53)	Santa Cruz/ Monterey (N=56)
Total	100.0	100.0	100.0	100.0	100.0	100.0	100.0	100.0	100.0	100.0
Age										
15-17	20.0	48.1	-	-	66.7	31.5	41.3	44.9	50.9	50.0
17-18	71.0	51.9	-	-	33.3	68.5	58.7	55.1	49.1	50.0
Race/ethnicity										
Hispanic	62.5	64.2	67.8	60.8	-	-	-	43.6	73.6	83.9
U.S.-born	34.2	35.3	48.9	22.7	-	-	-	12.8	58.5	44.6
Foreign-born	28.3	28.9	18.9	38.1	-	-	-	30.8	15.1	39.3
Black	11.0	7.0	5.6	8.2	-	-	-	51.3	9.4	1.8
White	21.0	24.6	21.1	27.8	-	-	-	0.0	13.2	10.7
Asian	5.4	4.3	5.6	3.1	-	-	-	5.1	3.8	3.6
Living situation at conception										
Living with at least one parent	61.2	69.5	78.9	60.8	75.8	63.0	71.7	69.2	71.7	67.9
Living with both parents	24.2	24.6	21.1	27.8	21.2	40.7	15.2	17.9	30.2	28.6
Living with mother only	32.5	40.6	52.2	29.9	47.0	22.2	52.2	47.4	35.8	35.7
Mobility										
Moved in past year	64.2	62.0	63.3	60.8	60.6	72.2	47.8	56.4	62.3	69.6
Public Assistance received										
Medi-Cal	86.1	87.4	81.1	93.5	84.4	90.4	91.3	92.3	77.4	90.4
WIC benefits	69.2	74.7	72.2	77.1	67.7	85.2	84.8	87.2	57.7	73.2
AFDC benefits	13.2	15.0	13.3	16.5	7.6	9.3	34.8	24.4	9.4	7.1
Education										
Currently in school	49.4	54.5	58.9	50.5	54.5	42.6	69.6	60.3	54.7	46.4
Dropped out prior to pregnancy	43.5	38.5	32.2	44.3	34.8	53.7	26.1	34.6	37.7	44.6
Would go to college if nothing in way	71.2	71.7	76.7	67.0	66.7	62.7	80.4	76.6	73.6	63.0
Expect to go to college	44.7	43.2	41.1	45.2	30.3	34.0	60.9	52.6	37.7	35.2
Extracurricular activities and employment										
Participated in any extracurricular activities	58.3	63.6	63.3	63.9	60.6	48.1	87.0	71.8	58.5	57.1
Employed in past year	69.5	63.1	51.1	74.2	62.1	50.0	73.9	51.3	75.5	67.9

(continued next page)

Appendix Table 1. Percentage of respondents, by selected characteristics, according to age, race/ethnicity and county of residence. UNWEIGHTED.

Characteristic	State-weighted Total (N=187)	Unweighted Total (N=187)	Age		Race/ethnicity*			County		
			15-16 (N=90)	17-18 (N=97)	Hispanic U.S.-born (N=66)	Hispanic Foreign (N=54)	Black (N=46)	Alameda (N=78)	Santa Clara (N=53)	Santa Cruz/ Monterey (N=56)
Life plans										
High aspirations	56.4	56.7	55.6	57.7	47.0	35.2	84.8	61.5	64.2	42.9
Other aspirations	19.2	18.7	16.7	20.6	22.7	27.8	8.7	16.7	15.1	25
No life plans	24.4	24.6	27.8	21.6	30.3	37	6.5	21.8	20.8	32.1
Peer relationships										
Have no close friends	10.4	10.2	8.9	11.3	12.1	14.8	4.3	6.4	9.4	16.1
Have close friend/sibling expecting/has children	68.7	68.4	72.2	64.9	68.2	63.0	71.7	73.1	66	64.3
Girlfriend is expecting	30.3	28.9	31.1	26.8	27.3	24.1	32.6	35.9	18.9	28.6
Girlfriend has children	36.9	35.8	35.6	36.1	39.4	24.1	43.5	39.7	39.6	26.8
Male friend has children	20.4	19.3	18.9	19.6	24.2	3.7	28.3	19.2	17.0	21.4
Sister was teenage mother	22.3	23.5	23.3	23.7	22.7	35.2	13.0	21.8	30.2	19.6
Partner relationships										
Ever in controlling/abusive relationship	47.3	42.8	40.0	45.4	47.0	29.6	45.7	37.2	52.8	41.1
Ever had a partner who:										
Kept her from doing things	30.2	26.7	24.4	28.9	30.3	16.7	28.3	23.1	34.0	25.0
Refused to use birth control	10.1	8.0	4.4	11.3	6.1	11.1	4.3	6.4	9.4	8.9
Hit or injured her	20.1	17.6	18.9	16.5	18.2	7.4	21.7	15.4	28.3	10.7
Ever been raped	13.0	12.4	11.2	13.4	9.1	7.4	20.0	11.7	15.1	10.7

* Note: Non-Hispanic white and Asian respondents are excluded here, due to small sample size.

Appendix Table 2. Selected measures reflecting characteristics of respondents' relationship with their baby's father and the father's characteristics, by age, race/ethnicity and county of residence. UNWEIGHTED.

Measure	State-weighted Total (N=187)	Unweighted Total (N=187)	Age		Race/ethnicity*			County		
			15-16 (N=90)	17-18 (N=97)	Hispanic U.S.-born (N=66)	Hispanic Foreign (N=54)	Black (N=46)	Alameda (N=78)	Santa Clara (N=53)	Santa Cruz/Monterey (N=56)
PERCENTAGES										
Relationship with the father										
Dating/engaged before pregnancy	97.7	96.8	95.6	97.9	93.9	100.0	95.7	97.4	94.3	98.2
Only steady relationship ever	48.5	50.8	50.0	51.5	50.0	63.5	39.1	53.9	47.2	50.0
Living together at time of interview	38.0	32.6	26.7	38.1	34.8	51.9	8.7	23.1	30.2	48.2
Think marriage is "very likely" in next few years	53.3	50.3	46.7	53.6	51.5	63.0	34.8	50.0	47.2	53.6
Reasons for first sex with the father										
Planned to marry him	57.5	55.1	44.4	64.9	48.5	74.1	47.8	56.4	43.4	64.3
Wanted baby	24.8	25.7	21.1	29.9	19.7	57.4	6.5	17.9	17.0	44.6
Father's background characteristics										
Employed	71.5	67.4	59.0	74.7	75.8	86.3	40.9	56.0	68.6	82.7
H.S. graduate	47.6	44.6	37.8	50.6	40.0	31.3	58.7	50.0	49.0	31.3
Has other children	16.9	19.6	21.6	17.7	15.4	3.8	43.5	26.9	13.2	15.1
Father's intention status at conception										
Intended	52.1	54.1	55.1	53.1	53.8	61.1	52.2	59.2	50.9	50.0
Did not care	22.6	20.5	19.1	21.9	18.5	25.9	17.4	18.4	13.2	30.4
Did not intend	25.2	25.4	25.8	25.0	27.7	13.0	30.4	22.4	35.8	19.6
MEANS										
Mos. dating before conception	13.5	14.5	11.9	16.9	12.6	13.2	19.8	16.6	13.2	12.7
Father's age	20.5	20.3	19.4	21.0	20.0	21.1	19.9	20.6	19.9	20.1
Age difference between partners (in years)	3.6	3.7	3.9	3.6	3.9	4.3	3.1	3.9	3.5	3.7

* Note: Non-Hispanic white and Asian respondents are excluded here, due to small sample size.

Appendix Table 3. Percentage of respondents, by selected measures related to contraceptive use, by age, race/ethnicity and county of residence. UNWEIGHTED.

Measure	State-weighted Total (N=187)	Unweighted Total (N=187)	Age		Race/ethnicity*			County		
			15-16 (N=90)	17-18 (N=97)	Hispanic U.S.-born (N=66)	Hispanic Foreign (N=54)	Black (N=46)	Alameda (N=78)	Santa Clara (N=53)	Santa Cruz/Monterey (N=56)
Ever-use										
Ever used any method	80.3	83.4	88.9	78.4	89.4	59.3	100	92.3	92.5	62.5
Ever received services from clinic/M.D.	66.5	64.0	60.7	67.0	68.2	47.2	71.7	58.4	77.4	58.9
Ever used oral contraceptives	36.5	32.1	24.4	39.2	25.8	20.4	47.8	30.8	43.4	23.2
Ever used condoms	75.8	78.6	84.4	73.2	83.3	50.0	100.0	88.5	84.9	58.9
Use during conception month										
Used method during conception month	37.0	40.9	43.3	38.5	36.9	25.9	65.2	52.6	34.6	30.4
Reported probable user failure	24.3	24.2	22.2	26.0	21.5	20.4	32.6	25.6	26.9	19.6
Reported probable method failure	12.7	16.7	21.1	12.5	15.4	5.6	32.6	26.9	7.7	10.7
Use no method	63.0	59.1	56.7	61.5	63.1	74.1	34.8	47.4	65.4	69.6
Reasons for nonuse (among nonusers)										
Respondent desired pregnancy	23.9	20.9	11.8	28.8	22.0	27.5	6.3	18.9	23.5	20.5
Never thought or talked about use	18.5	25.5	39.2	13.6	29.3	20.0	25.0	32.4	26.5	17.9
Baby's father desired pregnancy	18.3	19.1	15.7	22.0	19.5	27.5	12.5	16.2	17.6	23.1
Thought use unnecessary	17.7	17.3	13.7	20.3	17.1	10.0	37.5	10.8	17.6	23.1
Did not like/had problems with methods	17.0	20.9	17.6	23.7	17.1	25.0	31.3	18.9	23.5	20.5
Forgot or careless	14.6	8.2	7.8	8.5	9.8	2.5	6.3	8.1	8.8	7.7
Did not know about/have methods	9.3	7.3	7.8	6.8	4.9	10.0	0.0	8.1	5.9	7.7

* Note: Non-Hispanic white and Asian respondents are excluded here, due to small sample size.

Appendix Table 4. Percentage of respondents, by selected measures related to reactions and communication about the pregnancy, according to age, race/ethnicity and county of residence. UNWEIGHTED.

Measure	State-weighted Total (N=187)	Unweighted Total (N=187)	Age		Race/ethnicity*			County		
			15-16 (N=90)	17-18 (N=97)	Hispanic U.S.-born (N=66)	Hispanic Foreign (N=54)	Black (N=46)	Alameda (N=78)	Santa Clara (N=53)	Santa Cruz/ Monterey (N=56)
Respondent's reaction										
Positive only	27.4	27.8	25.6	29.9	25.8	48.1	15.2	26.9	22.6	33.9
Negative only	41.8	43.9	46.7	41.2	50.0	24.1	52.2	46.2	50.9	33.9
Mixed	23.9	20.3	17.8	22.7	22.7	20.4	15.2	12.8	24.5	26.8
Neutral	6.6	7.0	7.8	6.2	1.5	7.4	13.0	11.5	1.9	5.4
Told someone that day	76.8	79.1	78.9	79.4	80.3	72.2	89.1	80.8	84.9	71.4
First person told										
Baby's father	42.4	42.8	43.3	42.3	39.4	53.7	34.8	39.7	41.5	48.2
Mother	16.8	19.3	21.1	17.5	19.7	13.0	28.3	20.5	24.5	12.5
Girlfriend	16.2	16.0	12.2	19.6	16.7	18.5	15.2	15.4	13.2	19.6
Other	24.6	21.9	23.3	20.6	24.2	14.8	21.7	24.4	20.8	19.6
Baby's father's reaction										
Very happy initially	66.5	67.6	67.4	67.7	64.1	82.0	64.4	69.3	56.9	75.5
Very happy now	81.3	84.7	85.2	84.3	85.5	100.0	81.8	83.8	79.6	91.5
Support from baby's father										
Father has come to prenatal care visits	54.3	52.2	54.0	50.5	50.8	64.0	41.3	43.4	58.5	58.5
Expected father to be at delivery	80.4	80.4	80.0	80.9	84.4	90.0	71.1	77.3	76.9	88.5
Mother's reaction										
Positive, as expected	16.4	17.5	15.3	19.8	17.2	24.0	16.3	14.9	16.3	22.9
Negative, as expected	30.3	33.3	41.2	25.6	31.3	34.0	32.6	41.9	28.6	25.0
More positive than expected	38.3	36.3	30.6	41.9	35.9	26.0	48.8	35.1	38.8	35.4
Neutral/other	14.9	12.9	13.0	12.8	15.6	16.0	2.3	8.1	16.3	16.7
Mother is now very supportive	80.7	81.8	82.8	80.9	81.3	86.0	80.0	88.2	78.4	75.5
Father's reaction										
Positive, as expected	11.2	11.8	6.5	17.5	8.9	20.6	10.3	10.9	8.6	15.8
Negative, as expected	40.2	39.5	41.9	36.8	40.0	44.1	27.6	41.3	42.9	34.2
More positive than expected	30.7	32.8	38.7	26.3	42.2	11.8	44.8	37.0	37.1	23.7
Neutral/other	17.8	16.0	12.9	19.3	8.9	23.5	17.1	10.9	11.5	26.3
Father now very supportive	61.8	58.5	52.2	65.2	51.0	71.1	54.5	63.5	52.5	58.1

(Continued next page)

Appendix Table 4. Percentage of respondents, by selected measures related to reactions and communication about the pregnancy, according to age, race/ethnicity and county of residence. UNWEIGHTED.

Measure	State-weighted Total (N=187)	Unweighted Total (N=187)	Age		Race/ethnicity*			County		
			15-16 (N=90)	17-18 (N=97)	Hispanic U.S.-born (N=66)	Hispanic Foreign (N=54)	Black (N=46)	Alameda (N=78)	Santa Clara (N=53)	Santa Cruz/ Monterey (N=56)
Combined reactions of parents and baby's father										
All positive	11.7	10.2	5.6	14.4	4.5	16.7	10.9	10.3	5.7	14.3
Only parents positive	12.3	15.0	16.7	13.4	13.6	9.3	26.1	14.1	20.8	10.7
Baby's father positive and one parent positive	23.7	22.5	18.9	25.8	28.8	20.4	17.4	20.5	18.9	28.6
Baby's father only positive	34.9	33.2	37.8	28.9	30.3	40.7	28.3	35.9	32.1	30.4
No one positive	17.4	19.3	21.1	17.5	22.7	13.0	17.4	19.2	22.6	16.1
Felt comfortable telling friends	76.3	74.0	69.8	78.0	73.0	79.6	66.7	75.4	70.6	75.5
Relationship with friends negatively affected	27.7	24.1	25.6	22.7	36.4	9.3	19.6	15.4	37.7	23.2

* Note: Non-Hispanic white and Asian respondents are excluded here, due to small sample size.

Appendix Table 5. Percentage of respondents, by selected measures related to pregnancy decision-making, according to age, race/ethnicity and county of residence. UNWEIGHTED.

Measure	State-weighted Total (N=187)	Unweighted Total (N=187)	Age		Race/ethnicity*			County		
			15-16 (N=90)	17-18 (N=97)	Hispanic U.S.-born (N=66)	Hispanic Foreign (N=54)	Black (N=46)	Alameda (N=78)	Santa Clara (N=53)	Santa Cruz/Monterey (N=56)
Initial reaction										
Was sure about keeping baby	64.2	62.0	61.1	62.9	65.2	72.2	50.0	55.1	62.3	71.4
Needed time to think about what to do	35.8	38.0	38.9	37.1	34.8	27.8	50.0	44.9	37.7	28.6
Reasons for wanting to keep the baby										
Wants/accepts having baby only	46.2	46.7	47.2	46.2	47.7	67.3	29.5	42.9	46.2	52.8
<i>She wants a baby</i> *	47.4	46.5	46.7	46.4	48.5	63.0	28.3	39.7	50.9	51.8
<i>Wants to take responsibility</i> *	12.8	14.4	17.8	11.3	25.8	7.4	10.9	9.0	18.9	17.9
<i>Had support, could handle keeping</i> *	6.4	6.4	3.3	9.3	3.0	5.6	13.0	10.3	1.9	5.4
Against having an abortion/adoption only	31.5	31.3	32.6	30.1	24.6	21.2	50.0	37.7	28.8	24.5
<i>Doesn't want abortion</i> *	45.0	45.5	46.7	44.3	47.0	25.9	63.0	48.7	47.2	39.3
<i>Doesn't want adoption</i> *	19.5	13.4	11.1	15.5	18.2	7.4	6.5	10.3	17.0	14.3
Wants/accepts baby and against abortion/adoption	19.0	18.1	15.7	20.4	26.2	9.6	15.9	13.0	23.1	20.8
Baby's dad or others want baby only	3.3	3.8	4.5	3.2	1.5	1.9	4.5	6.5	1.9	1.9
<i>Baby's dad /others want baby</i> *	12.3	13.9	12.2	15.5	9.1	20.4	13.0	17.9	11.3	10.7
Option respondent favored most at first										
Birth and marry or live with father	50.6	46.5	42.2	50.5	47.0	66.7	26.1	44.9	50.9	44.6
Birth and live with family or on own	40.0	42.8	44.4	41.2	42.4	33.3	54.3	43.6	41.5	42.9
Abortion	4.9	8.6	11.1	6.2	9.1	0.0	17.4	10.3	7.5	7.1
Adoption	2.4	1.6	2.2	1.0	1.5	0.0	2.2	1.3	0.0	3.6
No preference	2.0	0.5	0.0	1.0	0.0	0.0	0.0	0.0	0.0	1.8
Option baby's father favored most at first										
Birth and marry or live with him	70.9	67.4	70.9	64.5	64.5	78.0	57.1	66.2	61.5	75.5
Birth and live with her family or on own	14.7	16.9	16.5	17.2	17.7	14.0	21.4	23.9	13.5	10.2
Abortion	13.0	14.5	11.4	17.2	14.5	8.0	21.4	9.9	23.1	12.2
Adoption	0.0	0.0	0.0	0.0	0.0	0.0	0.0	0.0	0.0	0.0
No preference	1.4	1.2	1.3	1.1	3.2	0.0	0.0	0.0	1.9	2.0
Who helped most with decision to continue pregnancy										
Baby's Father	33.6	35.1	35.6	34.7	34.8	39.6	35.6	32.1	35.8	38.9
Respondent made the decision herself	23.1	22.7	25.6	20.0	27.3	17.0	22.2	20.5	22.6	25.9
Respondent's mother	20.1	18.9	15.6	22.1	18.2	17.0	20.0	23.1	20.8	11.1
Other Relative	14.5	15.1	14.4	15.8	7.6	18.9	17.8	19.2	11.3	13.0
Clinic/church/school staff	5.1	4.9	5.6	4.2	6.1	3.8	4.4	2.6	5.7	7.4
Friends	3.6	3.2	3.3	3.2	6.1	3.8	0.0	2.6	3.8	3.7

* Any mention of the specific reason

* Note: Non-Hispanic white and Asian respondents are excluded here, due to small sample size.

Appendix Table 6. Percentage of respondents, by selected measures related to abortion experience and attitudes, by age, race/ethnicity and county of residence. UNWEIGHTED.

Measure	State-weighted Total (N=187)	Unweighted Total (N=187)	Age		Race/ethnicity*			County		
			15-16 (N=90)	17-18 (N=97)	Hispanic U.S.-born (N=66)	Hispanic Foreign (N=54)	Black (N=46)	Alameda (N=78)	Santa Clara (N=53)	Santa Cruz/ Monterey (N=56)
Ever considered abortion	32.6	35.8	38.9	33.0	37.9	13.0	56.5	34.6	45.3	28.6
Reasons abortion not considered/not obtained										
Wanted/was resigned to have baby only	24.4	28.9	32.2	25.8	34.4	30.0	28.9	29.3	25.0	32.1
<i>She wants a baby</i> *	21.5	24.1	25.6	22.7	33.3	24.1	19.6	20.5	24.5	28.6
<i>Resigned to keep baby</i> *	8.9	12.8	15.6	10.3	13.6	9.3	19.6	14.1	5.7	17.9
Opposed/afraid to have an abortion only	65.2	57.2	52.9	61.3	50.0	60.0	51.1	56.0	63.5	52.8
<i>Not right for respondent now</i> *	38.6	28.9	25.6	32.0	18.2	35.2	17.4	21.8	34.0	33.9
<i>Morally against abortion, it's murder</i> *	34.1	34.8	37.8	32.0	42.4	24.1	34.8	37.2	39.6	26.8
<i>Fear of abortion or its consequences</i> *	12.5	11.2	10.0	12.4	10.6	3.7	17.4	9.0	13.2	12.5
Wanted baby and opposed/afraid to have abortion	5.7	7.2	6.9	7.5	10.9	4.0	8.9	4.0	5.8	13.2
Others wanted baby/against abortion only	4.7	6.7	8.0	5.4	4.7	6.0	11.1	10.7	5.8	1.9
<i>Others wanted baby/against abortion</i> *	8.5	10.7	13.3	8.2	10.6	7.4	13.0	14.1	9.4	7.1
Ever had abortion	10.1	10.2	10.0	10.3	9.1	3.7	17.4	12.8	15.1	1.8
Friend ever had abortion	60.1	58.8	55.6	61.9	62.1	38.9	73.9	59.0	71.7	46.4
Approves of friends abortion**	46.0	42.7	42.0	43.3	34.1	33.3	52.9	41.3	50.0	34.6
Perceived abortion accessibility										
Very easy	36.0	34.8	32.5	37.2	37.3	22.7	45.0	34.8	44.4	25.0
Somewhat easy	28.8	28.5	30.0	26.9	32.2	25.0	30.0	24.6	28.9	34.1
Somewhat difficult	23.9	24.7	23.8	25.6	16.9	31.8	22.5	29.0	17.8	25.0
Very difficult	11.4	12.0	13.8	10.3	13.6	20.5	2.5	11.6	8.9	15.9
Major obstacles to abortion										
Too expensive	38.3	42.6	43.8	41.5	46.2	46.2	41.3	46.2	39.6	40.4
Nowhere nearby	14.8	16.0	17.2	14.9	15.6	17.6	10.9	15.8	15.4	17.0
Parents would prevent it	47.3	47.3	47.2	47.4	39.4	62.7	41.3	48.1	37.7	55.6
Difficult personal decision	80.6	76.8	77.5	76.0	78.8	76.9	69.6	70.1	79.2	83.6
Parental consent law	78.7	78.0	79.8	76.3	83.1	64.8	80.4	74.4	83.0	78.2

* Any mention of the specific reason

** Among those with friends who have had an abortion

* Note: Non-Hispanic white and Asian respondents are excluded here, due to small sample size.

Appendix Table 7. Percentage of respondents by selected questionnaire items, according to pregnancy intention at conception, age, race/ethnicity and county of residence. Unweighted.

Questionnaire item	State weighted total	Un-weighted total	Pregnancy intention			Age		Race/ethnicity*			County		
			Intended pregnancy	Did not care	Did not intend	15-16	17-18	Hispanic U.S. born	Hispanic Foreign	Black	Alameda	Santa Clara	Santa Cruz Monterey
N	187	187	48	54	85	90	97	66	54	46	78	53	56
A. School and Work: Experiences and Expectations													
A1. Currently in school	49.0	54.0	45.8	51.9	60.0	57.8	50.5	54.5	40.7	69.6	60.3	54.7	44.6
Not in school	51.0	46.0	54.2	48.1	40.0	42.2	49.5	45.5	59.3	30.4	39.7	45.3	55.4
A2a. Quit school:													
less than 6 months ago	13.3	15.3	11.5	16.0	17.6	21.6	10.4	23.3	9.7	7.1	9.7	16.7	20.0
6-11 months ago	37.9	37.6	23.1	32.0	52.9	51.4	27.1	43.3	22.6	57.1	48.4	41.7	23.3
1-2 years ago	29.3	27.1	30.8	32.0	20.6	16.2	35.4	26.7	29.0	28.6	25.8	33.3	23.3
more than 2 years ago	19.4	20.0	34.6	20.0	8.8	10.8	27.1	6.7	38.7	7.1	16.1	8.3	33.3
Mean months since quit school	16.4	16.3	22.2	17.4	11.2	10.5	20.9	10.7	25.2	11.5	14.1	10.8	23.1
A2b. Quit school because of:													
personal/family problems	21.1	16.3	11.5	11.5	23.5	15.8	16.7	16.7	3.1	28.6	9.7	33.3	9.7
problems with school	31.6	31.4	26.9	53.8	17.6	26.3	35.4	36.7	25.0	42.9	32.3	29.2	32.3
financial/work reasons	23.3	18.6	26.9	15.4	14.7	5.3	29.2	6.7	28.1	14.3	16.1	12.5	25.8
pregnancy reasons	11.9	12.8	3.8	7.7	23.5	18.4	8.3	20.0	9.4	7.1	9.7	20.8	9.7
respondent moved	26.8	30.2	42.3	23.1	26.5	28.9	31.3	33.3	31.3	28.6	25.8	33.3	32.3
school not available/safe	10.7	12.8	15.4	7.7	14.7	15.8	10.4	6.7	25.0	7.1	16.1	0.0	19.4
A4. Extracurricular activities:													
Community youth org.	7.7	7.0	8.3	3.7	8.2	3.3	10.3	1.5	11.1	8.7	9.0	3.8	7.1
Sports, cheerleading, gym.	24.1	25.7	16.7	31.5	27.1	23.3	27.8	21.2	29.6	30.4	30.8	18.9	25.0
Music, dance, theater, art	27.9	32.1	27.1	25.9	38.8	35.6	28.9	19.7	25.9	56.5	39.7	17.0	35.7
Church youth groups	24.6	25.7	25.0	24.1	27.1	25.6	25.8	25.8	16.7	34.8	23.1	32.1	23.2
Hobby clubs	16.6	16.6	10.4	18.5	18.8	14.4	18.6	18.2	13.0	17.4	14.1	15.1	21.4
Student government clubs	9.2	10.7	6.3	7.4	15.3	10.0	11.3	4.5	5.6	21.7	15.4	7.5	7.1
No involvement	41.7	36.4	45.8	38.9	29.4	36.7	36.1	39.4	51.9	13.0	28.2	41.5	42.9
Mean total number of activities	1.2	1.3	0.9	1.2	1.6	1.2	1.3	1.0	1.0	2.0	1.5	1.0	1.3
A5. Interest in school:													
very interested	22.7	24.1	31.3	18.5	23.5	23.3	24.7	18.2	31.5	28.3	32.1	17.0	19.6
somewhat interested	67.4	67.4	62.5	68.5	69.4	66.7	68.0	66.7	64.8	65.2	60.3	73.6	71.4
not at all interested	9.9	8.6	6.3	13.0	7.1	10.0	7.2	15.2	3.7	6.5	7.7	9.4	8.9
A6. School performance:													
better than most	11.0	12.4	8.3	7.4	17.9	12.2	12.5	10.6	18.5	10.9	15.4	9.4	10.9
about the same	74.5	73.1	81.3	74.1	67.9	65.6	80.2	63.6	74.1	84.8	78.2	67.9	70.9
worse than most	14.4	14.5	10.4	18.5	14.3	22.2	7.3	25.8	7.4	4.3	6.4	22.6	18.2
A7. Expect to go back to school	92.2	92.4	80.4	94.4	97.6	96.7	88.4	95.5	82.7	95.7	92.3	96.2	88.9
A9. Desire college if nothing in way	71.2	71.7	63.0	64.2	81.2	76.7	67.0	66.7	62.7	80.4	76.6	73.6	63.0
A10. Expect college now	44.7	43.2	37.0	34.0	52.4	41.1	45.2	30.3	34.0	60.9	52.6	37.7	35.2
% difference desire/expectations	26.5	28.5	26.0	30.2	28.8	35.6	21.8	36.4	28.7	19.5	24.0	35.9	27.8
A11. Employment in past year	69.5	63.1	58.3	57.4	69.4	51.1	74.2	62.1	50.0	73.9	51.3	75.5	67.9
Full-time	28.1	33.3	33.3	45.2	26.8	22.7	40.0	28.2	46.2	39.4	37.5	20.0	44.1
Part-time	58.5	52.6	37.0	48.4	62.5	54.5	51.4	51.3	38.5	54.5	57.5	67.5	29.4
A12a. Currently employed	31.1	22.9	10.7	19.4	30.5	6.5	33.3	17.1	25.9	23.5	22.5	17.5	28.9
A13. After baby, plans to work:													
as soon as baby is born	24.8	23.2	27.1	13.5	27.1	23.9	22.7	29.2	17.0	23.9	19.5	28.3	23.6
after education/training	29.4	32.4	16.7	40.4	36.5	40.9	24.7	41.5	18.9	34.8	31.2	43.4	23.6

R=respondent; BD=baby's dad

*Non-Hispanic white and Asian respondents are not shown separately due to small sample size

Appendix Table 7. Percentage of respondents by selected questionnaire items, according to pregnancy intention at conception, age, race/ethnicity and county of residence. Unweighted.

Questionnaire item	State weighted total	Un-weighted total	Pregnancy intention			Age		Race/ethnicity*			County		
			Intended pregnancy	Did not care	Did not intend	15-16	17-18	Hispanic U.S. born	Hispanic Foreign	Black	Alameda	Santa Clara	Santa Cruz Monterey
when baby is older	37.4	36.2	50.0	28.8	32.9	29.5	42.3	26.2	45.3	37.0	37.7	26.4	43.6
no plans to work outside home	8.4	8.1	6.3	17.3	3.5	5.7	10.3	3.1	18.9	4.3	11.7	1.9	9.1
A15. Life plans:													
none	24.4	24.6	41.7	20.4	17.6	27.8	21.6	30.3	37.0	6.5	21.8	20.8	32.1
less than college/unspec. edu	25.8	22.5	27.1	29.6	15.3	18.9	25.8	24.2	31.5	10.9	19.2	18.9	30.4
college/professional degree	29.6	31.6	16.7	35.2	37.6	31.1	32.0	27.3	25.9	43.5	34.6	30.2	28.6
unskilled/unspec. job	5.8	6.4	8.3	9.3	3.5	4.4	8.2	4.5	13.0	4.3	5.1	0.0	14.3
skilled job/military	18.2	15.0	8.3	13.0	20.0	14.4	15.5	13.6	7.4	19.6	12.8	18.9	14.3
college/+ job	26.0	26.2	14.6	27.8	31.8	25.6	26.8	21.2	11.1	43.5	28.2	35.8	14.3
marriage/family	6.1	4.8	4.2	3.7	5.9	5.6	4.1	9.1	3.7	0.0	0.0	5.7	10.7
other	8.0	8.0	10.4	9.3	5.9	7.8	8.2	7.6	9.3	6.5	5.1	3.8	16.1
B. Relationship with Friends													
B1/B2. Number of close friends:													
None of either sex	10.4	10.2	22.9	5.6	5.9	8.9	11.3	12.1	14.8	4.3	6.4	9.4	16.1
no girlfriends	12.5	12.3	25.0	7.4	8.2	11.1	13.4	15.2	16.7	6.5	9.0	9.4	19.6
no guyfriends	43.1	43.9	58.3	44.4	35.3	45.6	42.3	39.4	59.3	37.0	47.4	43.4	39.3
1 or 2 close friends	26.6	29.9	31.3	35.2	25.9	33.3	26.8	27.3	33.3	37.0	35.9	28.3	23.2
3 to 5 close friends	34.2	34.8	18.8	33.3	44.7	30.0	39.2	25.8	33.3	45.7	42.3	41.5	17.9
6 or more close friends	28.8	25.1	27.1	25.9	23.5	27.8	22.7	34.8	18.5	13.0	15.4	20.8	42.9
For those with girl/guyfriends:													
B3. All girlfriends currently in school	49.2	55.5	58.3	52.0	56.4	61.3	50.0	48.2	66.7	60.5	53.5	50.0	64.4
B4. All guyfriends currently in school	47.3	51.4	40.0	46.7	58.2	53.1	50.0	47.5	68.2	48.3	51.2	50.0	52.9
B5. Any girlfriends expecting baby	34.6	32.9	41.7	32.0	29.4	35.0	31.0	32.1	28.8	34.9	39.4	20.9	35.6
B6. Any girlfriends have babies	36.9	41.0	30.6	38.0	48.1	38.8	41.7	46.5	28.8	46.4	43.7	43.8	34.2
B7c. Friend's life mostly better after baby	32.8	32.8	27.3	26.3	37.8	37.5	28.6	34.6	23.1	30.0	32.3	47.6	13.3
B8. Any guyfriends with children	36.0	34.7	15.0	36.7	40.7	35.4	34.0	41.2	9.0	44.7	36.5	30.9	35.2
B9. Guyfriends' support for children:													
a lot	55.4	47.2	33.3	36.4	54.5	35.3	57.9	31.3	50.0	61.5	60.0	44.4	33.3
some	31.5	33.3	33.3	54.5	22.7	29.4	36.8	31.3	50.0	38.5	40.0	22.2	33.3
little/none	13.1	19.5	33.3	9.1	22.7	35.3	5.3	37.5	0.0	0.0	0.0	33.3	33.3
For those with girlfriends who are parents:													
B7a. Benefits of parenthood:													
baby love	31.6	35.8	27.3	57.9	27.0	21.9	48.6	23.1	61.5	45.0	32.3	28.6	53.3
baby caretaking	3.2	6.0	0.0	5.3	8.1	9.4	2.9	3.8	7.7	10.0	6.5	4.8	6.7
maturity/stability	46.2	34.3	45.5	21.1	37.8	31.3	37.1	46.2	23.1	20.0	22.6	57.1	26.7
positive emotions	14.5	11.9	9.1	5.3	16.2	9.4	14.3	7.7	23.1	10.0	6.5	9.5	26.7
no benefits	4.1	9.0	18.2	5.3	8.1	15.6	2.9	15.4	0.0	10.0	6.5	4.8	20.0
B7b. Problems of parenthood:													
baby/birth needs	51.9	52.2	36.4	47.4	59.5	59.4	45.7	65.4	38.5	45.0	38.7	52.4	80.0
relationship/family problems	11.1	9.0	0.0	21.1	5.4	6.3	11.4	15.4	7.7	5.0	3.2	19.0	6.7
limitations	50.9	41.8	36.4	36.8	45.9	40.6	42.9	57.7	46.2	15.0	16.1	42.9	93.3
maturity/responsibility	11.7	16.4	36.4	5.3	16.2	25.0	8.6	15.4	23.1	15.0	19.4	14.3	13.3
financial issues	39.1	38.8	18.2	36.8	45.9	31.3	45.7	26.9	30.8	55.0	41.9	33.3	40.0
negative emotions/actions	16.6	17.9	18.2	21.1	16.2	21.9	14.3	19.2	0.0	30.0	19.4	4.8	33.3
no problems	0.8	1.5	0.0	0.0	2.7	0.0	2.9	0.0	0.0	5.0	3.2	0.0	0.0
C. Current Living Arrangements and Relationship with Family													

R=respondent; BD=baby's dad

*Non-Hispanic white and Asian respondents are not shown separately due to small sample size

Appendix Table 7. Percentage of respondents by selected questionnaire items, according to pregnancy intention at conception, age, race/ethnicity and county of residence. Unweighted.

Questionnaire item	State weighted total	Un-weighted total	Pregnancy intention			Age		Race/ethnicity*			County		
			Intended pregnancy	Did not care	Did not intend	15-16	17-18	Hispanic U.S. born	Hispanic Foreign	Black	Alameda	Santa Clara	Santa Cruz Monterey
C1. Mean months at residence	31.9	30.3	21.1	31.9	34.4	30.0	30.5	39.1	15.8	37.3	31.8	33.8	24.7
% at residence <6 months	40.8	41.2	41.7	44.4	38.8	38.9	43.3	39.4	57.4	26.1	33.3	37.7	55.4
% at residence 6-12 months	23.5	20.9	27.1	14.8	21.2	24.4	17.5	21.2	14.8	21.7	23.1	24.5	14.3
C2. Why moved in last year:													
pregnancy reasons	31.0	31.9	30.3	28.1	35.3	33.3	30.5	30.0	35.9	27.3	27.3	42.4	28.2
personal reasons	40.9	31.9	36.4	37.5	25.5	22.8	40.7	35.0	43.6	9.1	31.8	27.3	35.9
family-related reasons	39.8	38.8	39.4	34.4	41.2	36.8	40.7	37.5	28.2	50.0	36.4	39.4	41.0
housing conditions	17.1	24.1	18.2	31.3	23.5	29.8	18.6	22.5	30.8	27.3	27.3	18.2	25.6
Mean number of people R lives with	3.9	4.1	4.1	4.3	4.0	4.6	3.7	4.6	4.7	3.0	3.4	4.6	4.7
C3. Who R lives with:													
Mother-biological	44.8	51.9	45.8	50.0	56.5	60.0	44.3	53.0	42.6	60.9	56.4	49.1	48.2
Father-biological	21.9	21.4	20.8	22.2	21.2	20.0	22.7	22.7	24.1	17.4	16.7	28.3	21.4
Baby's father	37.9	32.6	54.2	37.0	17.6	26.7	38.1	34.8	51.9	8.7	23.1	30.2	48.2
Baby's father's parents	14.5	13.9	20.8	16.7	8.2	13.3	14.4	13.6	24.1	4.3	10.3	15.1	17.9
If not living with biological mother:													
C4. Mean months without mother	50.9	39.5	44.5	35.2	39.2	33.6	43.5	31.3	22.5	52.9	42.8	52.0	24.1
C5. Reasons not with mother:													
pregnancy	8.9	12.2	0.0	7.4	24.3	13.9	11.1	12.9	16.1	11.1	8.8	14.8	13.8
personal/relationship	46.0	46.7	46.2	59.3	37.8	50.0	44.4	61.3	48.4	27.8	50.0	29.6	58.6
mother's faults	9.8	8.9	7.7	7.4	10.8	8.3	9.3	9.7	0.0	16.7	5.9	18.5	3.4
mother unavailable	35.7	30.0	42.3	25.9	24.3	19.4	37.0	19.4	41.9	22.2	29.4	22.2	37.9
other family reasons	12.8	13.3	15.4	3.7	18.9	13.9	13.0	16.1	6.5	16.7	5.9	18.5	17.2
If not living with biological father:													
C9. Mean months without father	83.3	90.2	70.5	82.8	105.9	99.4	81.3	107.1	45.9	116.8	93.2	103.9	73.9
C10. Reasons not with father:													
pregnancy	5.6	6.8	5.3	7.1	7.5	6.9	6.7	3.9	17.1	2.6	3.1	13.2	6.8
personal/relationship	30.8	26.5	36.8	35.7	14.9	23.6	29.3	29.4	31.7	15.8	20.0	31.6	31.8
father's faults	7.1	6.1	2.6	4.8	9.0	8.3	4.0	2.0	0.0	10.5	7.7	5.3	4.5
father unavailable	27.3	25.9	31.6	26.2	22.4	20.8	30.7	15.7	41.5	21.1	27.7	10.5	36.4
other family reasons	24.8	25.2	26.3	16.7	29.9	23.6	26.7	27.5	22.0	26.3	24.6	15.8	34.1
Family relationships:													
Mom questions for biological mom	82.2	86.1	81.3	83.3	90.6	88.9	83.5	87.9	85.2	89.1	89.7	79.2	87.5
Mom questions for mom figure	12.7	10.2	14.6	11.1	7.1	8.9	11.3	9.1	9.3	8.7	9.0	18.9	3.6
R has no mom/mom figure	5.1	3.7	4.2	5.6	2.4	2.2	5.2	3.0	5.6	2.2	1.3	1.9	8.9
Dad questions for biological dad	55.8	55.6	56.3	64.8	49.4	54.4	56.7	50.0	61.1	58.7	52.6	60.4	55.4
Dad questions for dad figure	22.5	21.4	18.8	14.8	27.1	25.6	17.5	30.3	13.0	13.0	16.7	22.6	26.8
R has no dad/dad figure	21.7	23.0	25.0	20.4	23.5	20.0	25.8	19.7	25.9	28.3	30.8	17.0	17.9
C14. Closeness to mother/mother figure:													
very close	60.5	59.2	55.6	62.7	59.0	60.2	58.2	59.4	58.8	60.0	62.3	51.0	62.7
somewhat close	27.2	33.0	35.6	33.3	31.3	34.1	31.9	34.4	31.4	35.6	35.1	37.3	25.5
not very/not at all close	12.4	7.8	8.9	3.9	9.6	5.6	9.9	6.2	9.8	4.4	2.6	11.8	11.7
C15. Discusses problems with mom/figure:													
all the time	30.7	27.4	22.2	23.5	32.5	33.0	22.0	31.3	17.6	26.7	28.6	27.5	25.5
very often	19.5	22.9	22.2	21.6	24.1	22.7	23.1	26.6	23.5	20.0	14.3	29.4	29.4
once in awhile	35.6	39.7	44.4	47.1	32.5	38.6	40.7	31.3	51.0	44.4	49.4	31.4	33.3
never	14.2	10.1	11.1	7.8	10.8	5.7	14.3	10.9	7.8	8.9	7.8	11.8	11.8

R=respondent; BD=baby's dad

*Non-Hispanic white and Asian respondents are not shown separately due to small sample size

Appendix Table 7. Percentage of respondents by selected questionnaire items, according to pregnancy intention at conception, age, race/ethnicity and county of residence. Unweighted.

Questionnaire item	State weighted total	Un-weighted total	Pregnancy intention			Age		Race/ethnicity*			County		
			Intended pregnancy	Did not care	Did not intend	15-16	17-18	Hispanic U.S. born	Hispanic Foreign	Black	Alameda	Santa Clara	Santa Cruz Monterey
C16. Closeness to father/father figure:													
very close	28.1	32.9	30.6	33.3	33.8	31.9	33.8	28.3	27.5	51.5	38.9	25.0	33.3
somewhat close	38.4	38.5	38.9	35.7	40.0	41.7	35.2	47.2	35.9	30.3	38.9	40.9	35.6
not very/not at all close	33.6	28.7	30.5	30.9	26.2	26.4	31.0	24.5	35.9	18.2	22.3	34.0	31.1
C17. Discusses problems with dad/figure:													
all the time	8.0	10.5	8.3	11.9	10.8	12.5	8.5	17.0	7.7	9.1	7.4	13.6	11.1
very often	12.6	14.0	13.9	7.1	18.5	15.3	12.7	9.4	10.3	21.2	13.0	18.2	11.1
once in awhile	50.7	44.8	47.2	47.6	41.5	40.3	49.3	45.3	51.3	30.3	42.6	43.2	48.9
never	28.7	30.8	30.6	33.3	29.2	31.9	29.6	28.3	30.8	39.4	37.0	25.0	28.9
Has siblings who were teen parents	25.5	28.9	35.4	31.5	23.5	28.9	28.9	25.8	38.9	23.9	32.1	30.2	23.2
C20. Sister was teen mom	22.3	23.5	33.3	24.1	17.6	23.3	23.7	22.7	35.2	13.0	21.8	30.2	19.6
C22. Brother was teen dad	5.9	8.0	4.2	11.1	8.2	6.7	9.3	6.1	7.4	13.0	12.8	3.8	5.4
D. Relationships with Guys													
Mean years since 1st sex	1.7	1.6	1.8	1.6	1.5	1.3	1.8	1.6	1.1	2.0	1.6	1.7	1.4
D1. Mean age respondent at first sex	15.2	15.0	15.2	15.0	15.0	14.3	15.7	14.6	15.8	14.8	15.1	14.8	15.2
D4. Mean age partner at first sex	17.8	17.8	18.7	18.0	17.2	17.0	18.5	17.2	19.9	17.0	18.1	16.7	18.4
Mean difference in ages	2.7	2.8	3.5	3.0	2.4	2.8	2.8	2.6	4.1	2.1	3.0	2.1	3.3
D2. Used birth control	56.0	57.8	41.7	53.7	69.4	61.1	54.6	59.1	25.9	80.4	59.0	69.8	44.6
Among users, % used condoms	98.0	97.2	95.0	100.0	96.6	100.0	94.3	100.0	92.9	94.6	97.8	94.6	100.0
D5. Mother knew R was sexually active	50.8	47.5	42.2	51.0	48.2	44.3	50.5	51.6	23.5	62.2	48.1	54.9	39.2
D6. Father knew R was sexually active	33.5	31.0	30.6	28.6	32.8	28.2	33.8	28.3	15.0	48.5	37.0	34.1	20.5
D7. Only one steady relationship ever	48.5	50.8	54.3	61.1	42.4	50.0	51.5	50.0	63.5	39.1	53.9	47.2	50.0
Relationship with baby's father:													
D10. Was boyfriend/fiancée before preg	97.7	96.8	97.9	100.0	94.1	95.6	97.9	93.9	100.0	95.7	97.4	94.3	98.2
D13. Is boyfriend/fiancée now	74.7	76.5	87.5	83.3	65.9	74.4	78.4	81.8	77.8	73.9	78.2	75.5	75.0
D11. Mean months together at conception	13.5	14.5	14.7	18.0	12.0	11.9	16.9	12.6	13.2	19.8	16.6	13.2	12.7
D12. First sex with BD because:													
really liked/loved him	91.8	93.0	93.8	96.3	90.6	95.6	90.7	89.4	100.0	89.1	94.9	88.7	94.6
planned on marrying him	57.5	55.1	68.8	64.8	41.2	44.4	64.9	48.5	74.1	47.8	56.4	43.4	64.3
would lose him if didn't	5.0	5.3	8.3	3.7	4.7	2.2	8.2	1.5	14.8	2.2	3.8	3.8	8.9
wanted to have baby	24.8	25.7	56.3	29.6	5.9	21.1	29.9	19.7	57.4	6.5	17.9	17.0	44.6
girlfriends had done it	11.0	12.6	19.1	15.1	7.3	13.6	11.7	12.1	25.0	4.7	12.2	5.7	20.0
just wanted to	82.7	84.0	85.4	81.5	84.7	85.6	82.5	86.4	83.3	84.8	87.2	79.2	83.9
curious	43.5	48.1	29.2	57.4	52.9	50.0	46.4	40.9	50.0	56.5	51.3	47.2	44.6
it just happened	69.3	70.6	68.8	66.7	74.1	71.1	70.1	71.2	85.2	60.9	76.9	50.9	80.4
forced to do it	2.4	2.1	4.2	3.7	0.0	1.1	3.1	1.5	1.9	2.2	3.8	0.0	1.8
D14. Marriage to baby's father in next few years:													
very likely	54.3	50.3	68.8	53.7	37.6	46.7	53.6	51.5	63.0	34.8	50.0	47.2	53.6
somewhat likely	21.6	25.7	14.6	35.2	25.9	27.8	23.7	30.3	18.5	32.6	26.9	26.4	23.2
not too/not at all likely	24.1	24.0	16.6	11.1	36.4	25.6	22.7	18.1	18.6	32.6	23.1	26.4	23.2
D15. Reasons why marriage not very likely:													
BD's faults	16.0	11.8	0.0	20.0	11.3	6.3	17.8	15.6	5.0	10.0	7.7	14.3	15.4
BD doesn't want marriage/baby	8.4	11.8	20.0	8.0	11.3	10.4	13.3	6.3	15.0	13.3	15.4	10.7	7.7
BD married/involved w/ other	9.4	7.5	0.0	4.0	11.3	8.3	6.7	9.4	0.0	6.7	7.7	10.7	3.8
not together/don't get along	44.0	34.4	46.7	36.0	30.2	31.3	37.8	34.4	50.0	20.0	20.5	35.7	53.8

R=respondent; BD=baby's dad

*Non-Hispanic white and Asian respondents are not shown separately due to small sample size

Appendix Table 7. Percentage of respondents by selected questionnaire items, according to pregnancy intention at conception, age, race/ethnicity and county of residence. Unweighted.

Questionnaire item	State weighted total	Un-weighted total	Pregnancy intention			Age		Race/ethnicity*			County		
			Intended pregnancy	Did not care	Did not intend	15-16	17-18	Hispanic U.S. born	Hispanic Foreign	Black	Alameda	Santa Clara	Santa Cruz Monterey
R doesn't want to marry BD	14.7	22.6	13.3	12.0	30.2	22.9	22.2	21.9	0.0	46.7	33.3	21.4	7.7
other	9.3	9.7	20.0	8.0	7.5	10.4	8.9	9.4	10.0	10.0	10.3	10.7	7.7
undecided/don't know	20.6	22.6	33.3	28.0	17.0	22.9	22.2	25.0	40.0	13.3	23.1	17.9	26.9
E. Circumstances Related to Becoming Pregnant													
E1. Anticipated advantages of baby:													
baby love	38.1	41.2	43.8	46.3	36.5	46.7	36.1	48.5	35.2	43.5	38.5	41.5	44.6
baby caretaking	11.8	13.9	18.8	13.0	11.8	18.9	9.3	18.2	5.6	15.2	11.5	17.0	14.3
relationship with BD	15.4	13.9	20.8	22.2	4.7	11.1	16.5	10.6	27.8	4.3	12.8	13.2	16.1
maturity and stability	8.0	9.6	8.3	7.4	11.8	14.4	5.2	13.6	3.7	10.9	6.4	15.1	8.9
pregnancy/birth	4.6	7.5	6.3	11.1	5.9	8.9	6.2	6.1	1.9	17.4	11.5	3.8	5.4
E2. Anticipated disadvantages of baby:													
baby/birth needs	24.8	25.1	22.9	20.4	29.4	27.8	22.7	24.2	14.8	32.6	25.6	30.2	19.6
family/partner/peer problems	18.6	18.2	25.0	18.5	14.1	16.7	19.6	24.2	16.7	15.2	14.1	22.6	19.6
limitations	44.2	42.8	27.1	38.9	54.1	46.7	39.2	54.5	27.8	39.1	34.6	54.7	42.9
maturity/responsibility	18.1	16.6	10.4	13.0	22.4	18.9	14.4	15.2	18.5	10.9	12.8	20.8	17.9
financial issues	13.8	16.0	12.5	16.7	17.6	16.7	15.5	15.2	7.4	26.1	12.8	24.5	12.5
E3/E4 R's intentions at conception:													
Wanted pregnancy-reasons:													
because R wanted baby	29.2	25.7				16.7	34.0	24.2	40.7	13.0	20.5	26.4	32.1
because BD wanted baby	58.7	56.3				46.7	60.6	43.8	72.7	33.3	50.0	57.1	61.1
love/want to keep BD	20.2	18.8				6.7	24.2	25.0	18.2	16.7	25.0	28.6	5.6
wanted family/time was right	16.1	16.7				26.7	12.1	43.8	4.5	0.0	6.3	21.4	22.2
Didn't want pregnancy-reasons:	23.4	22.9				13.3	27.3	31.3	13.6	50.0	37.5	14.3	16.7
didn't want/wasn't ready for baby	43.1	45.5				55.6	36.1	51.5	25.9	56.5	46.2	49.1	41.1
would interrupt goals	58.3	62.4				68.0	54.3	58.8	78.6	57.7	63.9	53.8	69.6
instability in life/finances	35.6	36.5				28.0	48.6	35.3	42.9	42.3	33.3	26.9	52.2
Didn't Care-reasons:	30.8	21.2				22.0	20.0	29.4	14.3	7.7	11.1	26.9	30.4
fatalistic/baby inevitable	27.7	28.9				27.8	29.9	24.2	33.3	30.4	33.3	24.5	26.8
doesn't matter either way	20.3	14.8				12.0	17.2	25.0	0.0	14.3	15.4	7.7	20.0
mixed feelings/timing off	26.3	24.1				20.0	27.6	25.0	27.8	14.3	19.2	15.4	40.0
thought was infertile	32.7	33.3				32.0	34.5	31.3	38.9	28.6	30.8	23.1	46.7
dk/didn't think about	9.3	11.1				12.0	10.3	18.8	5.6	14.3	7.7	15.4	13.3
	24.3	22.2				28.0	17.2	12.5	27.8	21.4	23.1	38.5	6.7
E5/E6 BD's intentions at conception:													
Wanted pregnancy													
because R wanted baby	52.1	54.1	83.3	54.7	36.9	55.1	53.1	53.0	61.1	52.2	59.2	50.9	50.0
because BD wanted baby	9.9	7.0	15.0	3.4	0.0	0.0	13.7	8.6	9.1	4.2	4.4	14.8	3.6
love/wanted to keep R	49.4	51.0	55.0	55.2	41.9	51.0	51.0	57.1	48.5	50.0	53.3	55.6	42.9
wanted family/time was right	29.6	26.0	30.0	20.7	25.8	24.5	27.5	20.0	27.3	20.8	20.0	25.9	35.7
Didn't want pregnancy	11.3	10.0	12.5	6.9	9.7	10.2	9.8	8.6	12.1	8.3	11.1	11.1	7.1
didn't want/wasn't ready for baby	25.2	25.4	8.3	13.2	42.9	25.8	25.0	27.3	13.0	30.4	22.4	35.8	19.6
would interfere with goals	52.5	55.3	75.0	28.6	58.3	60.9	50.0	55.6	85.7	50.0	52.9	57.9	54.5
instability in life/finances	7.8	12.8	25.0	0.0	13.9	8.7	16.7	11.1	14.3	21.4	11.8	10.5	18.2
Didn't care	36.9	25.5	0.0	42.9	25.0	21.7	29.2	22.2	14.3	21.4	23.5	31.6	18.2
fatalistic/baby inevitable	22.6	20.5	8.3	32.1	20.2	19.1	21.9	18.2	25.9	17.4	18.4	13.2	30.4
doesn't matter either way	16.1	21.1	25.0	41.2	0.0	17.6	23.8	16.7	21.4	37.5	35.7	14.3	11.8
	36.8	36.8	50.0	23.5	47.1	41.2	33.3	41.7	35.7	25.0	28.6	42.9	41.2

R=respondent; BD=baby's dad

*Non-Hispanic white and Asian respondents are not shown separately due to small sample size

Appendix Table 7. Percentage of respondents by selected questionnaire items, according to pregnancy intention at conception, age, race/ethnicity and county of residence. Unweighted.

Questionnaire item	State weighted total	Un-weighted total	Pregnancy intention			Age		Race/ethnicity*			County		
			Intended pregnancy	Did not care	Did not intend	15-16	17-18	Hispanic U.S. born	Hispanic Foreign	Black	Alameda	Santa Clara	Santa Cruz Monterey
timing off	9.2	10.5	0.0	11.8	11.8	17.6	4.8	8.3	14.3	12.5	21.4	0.0	5.9
dk/didn't think about	34.2	26.3	25.0	17.6	35.3	17.6	33.3	25.0	21.4	25.0	14.3	28.6	35.3
E7. Used contraception during preg. Mo.	37.6	41.2	22.9	35.2	55.3	43.3	39.2	37.9	25.9	65.2	52.6	35.8	30.4
E8a. If didn't use, why not:													
desired pregnancy	29.4	27.3	51.4	28.6	2.6	19.6	33.9	26.8	37.5	12.5	27.0	23.5	30.8
method problems	17.0	20.9	29.7	20.0	13.2	17.6	23.7	17.1	25.0	31.3	18.9	23.5	20.5
no access/info	9.3	7.3	0.0	5.7	15.8	7.8	6.8	4.9	10.0	0.0	8.1	5.9	7.7
thought unnecessary	17.7	17.3	18.9	17.1	15.8	13.7	20.3	17.1	10.0	37.5	10.8	17.6	23.1
forgot/careless	14.6	8.2	2.7	2.9	18.4	7.8	8.5	9.8	2.5	6.3	8.1	8.8	7.7
dk/never thought/talked about	18.5	25.5	8.1	25.7	42.1	39.2	13.6	29.3	20.0	25.0	32.4	26.5	17.9
Alcohol/drug use before sex:													
E9. Partner	22.9	22.1	18.8	19.2	25.9	22.1	22.1	24.2	14.8	26.1	21.3	28.0	17.9
E10. Respondent	12.8	9.7	6.3	9.4	11.8	9.0	10.3	12.1	3.7	8.7	10.3	9.6	8.9
F. Pregnancy decisions													
F1. Pregnancy discovered-clinic test	75.7	79.1	85.4	75.9	77.6	82.2	76.3	75.8	81.5	84.8	79.5	79.2	78.6
F2. Mean # of weeks at discovery	7.0	7.3	6.7	6.9	8.0	7.8	6.9	7.3	6.5	7.5	7.5	7.2	7.3
F3. R's reaction to pregnancy:													
positive	27.4	27.8	62.5	33.3	4.7	25.6	29.9	25.8	48.1	15.2	26.9	22.6	33.9
negative	41.8	43.9	20.8	37.0	61.2	46.7	41.2	50.0	24.1	52.2	46.2	50.9	33.9
mixed	23.9	20.3	14.6	20.4	23.5	17.8	22.7	22.7	20.4	15.2	12.8	24.5	26.8
neutral	6.6	7.0	2.1	9.3	8.2	7.8	6.2	1.5	7.4	13.0	11.5	1.9	5.4
F5. Told someone on first day knew	76.8	79.1	83.3	83.3	74.1	78.9	79.4	80.3	72.2	89.1	80.8	84.9	71.4
F4. Told who first:													
mom	16.8	19.3	16.7	14.8	23.5	21.1	17.5	19.7	13.0	28.3	20.5	24.5	12.5
baby's father	42.4	42.8	58.3	51.9	28.2	43.3	42.3	39.4	53.7	34.8	39.7	41.5	48.2
friend	16.2	16.0	6.3	14.8	22.4	12.2	19.6	16.7	18.5	15.2	15.4	13.2	19.6
other	24.6	21.9	18.8	18.5	25.9	23.3	20.6	24.2	14.8	21.7	24.4	20.8	19.6
F8b. Was sure about keeping baby	64.2	62.0	81.3	75.9	42.4	61.1	62.9	65.2	72.2	50.0	55.1	62.3	71.4
F9. Reasons for keeping:													
R wants baby	47.4	46.5	79.2	51.9	24.7	46.7	46.4	48.5	63.0	28.3	39.7	50.9	51.8
BD/others want baby	12.3	13.9	27.1	11.1	8.2	12.2	15.5	9.1	20.4	13.0	17.9	11.3	10.7
taking responsibility	12.8	14.4	6.3	14.8	18.8	17.8	11.3	25.8	7.4	10.9	9.0	18.9	17.9
don't want abortion	45.0	45.5	22.9	42.6	60.0	46.7	44.3	47.0	25.9	63.0	48.7	47.2	39.3
don't want adoption	19.5	13.4	6.3	11.1	18.8	11.1	15.5	18.2	7.4	6.5	10.3	17.0	14.3
had support/could handle keeping	6.4	6.4	4.2	1.9	10.6	3.3	9.3	3.0	5.6	13.0	10.3	1.9	5.4
F8a. Option R most wanted:													
Have baby-live at home	24.4	29.9	16.7	31.5	36.5	37.8	22.7	36.4	25.9	28.3	28.2	32.1	30.4
Have baby-live on own	15.6	12.8	10.4	9.3	16.5	6.7	18.6	6.1	7.4	26.1	15.4	9.4	12.5
Have baby-marry	31.6	29.4	52.1	35.2	12.9	24.4	34.0	31.8	40.7	17.4	30.8	30.2	26.8
Have baby-live with BD	19.0	17.1	18.8	20.4	14.1	17.8	16.5	15.2	25.9	8.7	14.1	20.8	17.9
Adopt baby out	2.4	1.6	2.1	0.0	2.4	2.2	1.0	1.5	0.0	2.2	1.3	0.0	3.6
Have abortion	4.9	8.6	0.0	3.7	16.5	11.1	6.2	9.1	0.0	17.4	10.3	7.5	7.1
F11. BD's reaction to pregnancy:													
positive	57.1	55.6	79.2	53.7	43.5	56.7	54.6	53.0	66.7	47.8	59.0	43.4	62.5
negative	25.0	28.3	10.4	24.1	41.2	32.2	24.7	33.3	13.0	34.8	26.9	39.6	19.6
mixed	13.2	10.2	8.3	13.0	9.4	5.6	14.4	10.6	11.1	8.7	7.7	13.2	10.7

R=respondent; BD=baby's dad

*Non-Hispanic white and Asian respondents are not shown separately due to small sample size

Appendix Table 7. Percentage of respondents by selected questionnaire items, according to pregnancy intention at conception, age, race/ethnicity and county of residence. Unweighted.

Questionnaire item	State weighted total	Un-weighted total	Pregnancy intention			Age		Race/ethnicity*			County		
			Intended pregnancy	Did not care	Did not intend	15-16	17-18	Hispanic U.S. born	Hispanic Foreign	Black	Alameda	Santa Clara	Santa Cruz Monterey
neutral	2.3	2.7	0.0	3.7	3.5	1.1	4.1	1.5	1.9	6.5	2.6	3.8	1.8
F13a. Option BD most wanted R to do:													
Have baby-live at home	12.5	14.0	10.6	14.0	16.0	16.5	11.8	17.7	10.0	14.0	18.3	13.5	8.2
Have baby-live on own	2.2	2.9	2.1	4.0	2.7	0.0	5.4	0.0	4.0	7.0	5.6	0.0	2.0
Have baby-marry	41.1	40.1	57.4	40.0	29.3	41.8	38.7	38.7	50.0	30.2	40.8	32.7	46.9
Have baby-live with BD	29.8	27.3	23.4	32.0	26.7	29.1	25.8	25.8	28.0	25.6	25.4	28.8	28.6
Adopt baby out	0.0	0.0	0.0	0.0	0.0	0.0	0.0	0.0	0.0	0.0	0.0	0.0	0.0
Have abortion	13.0	14.5	6.4	8.0	24.0	11.4	17.2	14.5	8.0	20.9	9.9	23.1	12.2
F14. BD was very happy at first	66.5	67.6	87.2	71.2	53.8	67.4	67.7	63.1	82.0	63.0	69.3	56.9	75.5
F15. BD is very happy now	81.3	84.7	97.8	90.0	73.3	85.2	84.3	81.5	90.0	80.0	83.8	79.6	91.5
F16. BD has come to prenatal visits	54.3	52.2	61.7	50.0	48.2	54.0	50.5	50.8	64.0	41.3	43.4	58.5	58.5
F17. BD will be at delivery	80.4	80.4	89.4	88.5	70.0	80.0	80.9	83.1	90.0	71.1	77.3	76.9	88.5
F20. Didn't tell mom right away	47.7	50.3	47.9	50.0	51.8	48.9	51.5	42.4	63.0	50.0	47.4	47.2	57.1
F21. Why didn't tell mom at first:													
afraid/unsure of reaction	53.2	58.5	43.5	63.0	63.6	70.5	48.0	82.1	50.0	52.2	56.8	52.0	65.6
nervous/embarrassed/dk how to tell	16.1	16.0	17.4	18.5	13.6	15.9	16.0	10.7	14.7	17.4	21.6	16.0	9.4
not yet sure preg/keeping	13.3	11.7	8.7	11.1	13.6	9.1	14.0	7.1	11.8	13.0	8.1	24.0	6.3
no/poor communication	17.2	11.7	26.1	7.4	6.8	4.5	18.0	7.1	17.6	4.3	2.7	12.0	21.9
F22. Mom's reaction to pregnancy:													
positive	26.4	26.2	37.5	18.5	24.7	17.8	34.0	16.7	31.5	37.0	26.9	22.6	28.6
negative	40.7	48.1	39.6	48.1	52.9	60.0	37.1	54.5	46.3	45.7	52.6	54.7	35.7
mixed	14.6	13.4	12.5	13.0	14.1	13.3	13.4	19.7	13.0	6.5	10.3	15.1	16.1
neutral	7.4	5.9	4.2	11.1	3.5	4.4	7.2	6.1	3.7	6.5	6.4	1.9	8.9
F23. Mom positive as expected	16.4	17.5	33.3	12.5	11.5	15.3	19.8	17.2	24.0	16.3	14.9	16.3	22.9
Mom negative as expected	30.3	33.3	28.9	27.1	39.7	41.2	25.6	31.3	34.0	31.1	41.9	28.6	25.0
Mom neutral as expected	10.9	9.9	13.3	8.3	9.0	10.6	9.3	10.9	14.0	2.3	8.1	8.2	14.6
Expected mom more negative	38.3	36.3	22.2	47.9	37.2	30.6	41.9	35.9	26.0	46.7	35.1	38.8	35.4
F27. Mom is now very supportive	80.7	81.8	78.3	81.3	84.1	82.8	80.9	81.3	84.3	80.0	88.2	78.4	75.5
F25. Option mom most wanted R to do:													
Have baby-live at home	38.2	42.9	30.2	34.0	55.1	46.5	39.0	47.6	37.5	47.7	41.3	48.0	39.5
Have baby-live on own	7.1	6.0	2.3	10.6	5.1	2.3	9.8	4.8	0.0	13.6	8.0	2.0	7.0
Have baby-marry	27.9	25.0	39.5	29.8	14.1	17.4	32.9	19.0	47.9	9.1	26.7	20.0	27.9
Have baby-live with BD	10.2	8.3	14.0	8.5	5.1	7.0	9.8	11.1	6.3	6.8	9.3	4.0	11.6
Adopt baby out	0.3	0.6	0.0	0.0	1.3	1.2	0.0	1.6	0.0	0.0	1.3	0.0	0.0
Have abortion	11.9	14.9	14.0	14.9	15.4	23.3	6.1	12.7	6.3	22.7	13.3	22.0	9.3
F30. Didn't tell dad right away	55.2	56.7	47.9	57.4	61.2	64.4	49.5	54.5	55.6	58.7	53.8	58.5	58.9
F31. Why didn't tell dad at first:													
afraid/unsure of reaction	67.6	65.1	73.9	61.3	63.5	63.8	66.7	66.7	76.7	48.1	59.5	64.5	72.7
nervous/embarrassed/dk how to tell	5.4	6.6	0.0	3.2	11.5	5.2	8.3	5.6	13.3	3.7	4.8	6.5	9.1
no/poor communication	22.9	24.5	26.1	22.6	25.0	29.3	18.8	25.0	16.7	33.3	26.2	22.6	24.2
F32. Dad's reaction to pregnancy:													
positive	16.8	15.5	25.0	22.2	5.9	13.3	17.5	12.1	16.7	17.4	14.1	11.3	21.4
negative	32.1	35.3	25.0	37.0	40.0	40.0	30.9	40.9	33.3	32.6	35.9	39.6	30.4
mixed	4.2	4.8	0.0	3.7	8.2	5.6	4.1	7.6	1.9	4.3	3.8	7.5	3.6
neutral	10.5	10.2	14.6	5.6	10.6	11.1	9.3	9.1	11.1	10.9	7.7	9.4	14.3
F35. Option dad most wanted R to do:													

R=respondent; BD=baby's dad

*Non-Hispanic white and Asian respondents are not shown separately due to small sample size

Appendix Table 7. Percentage of respondents by selected questionnaire items, according to pregnancy intention at conception, age, race/ethnicity and county of residence. Unweighted.

Questionnaire item	State weighted total	Un-weighted total	Pregnancy intention			Age		Race/ethnicity*			County		
			Intended pregnancy	Did not care	Did not intend	15-16	17-18	Hispanic U.S. born	Hispanic Foreign	Black	Alameda	Santa Clara	Santa Cruz Monterey
Have baby-live at home	30.7	33.6	28.0	30.0	38.5	37.7	29.6	35.1	28.1	37.9	37.8	42.9	20.6
Have baby-live on own	8.0	6.5	0.0	3.3	11.5	5.7	7.4	5.4	0.0	10.3	6.7	3.6	8.8
Have baby-marry	34.5	29.9	36.0	56.7	11.5	15.1	44.4	27.0	50.0	13.8	26.7	25.0	38.2
Have baby-live with BD	9.1	7.5	8.0	3.3	9.6	7.5	7.4	2.7	15.6	3.4	8.9	0.0	11.8
Adopt baby out	0.3	0.9	0.0	0.0	1.9	1.9	0.0	0.0	0.0	3.4	2.2	0.0	0.0
Have abortion	13.4	16.8	28.0	6.7	17.3	22.6	11.1	21.6	6.3	24.1	17.8	21.4	11.8
F33. Dad positive as expected	11.2	11.8	25.8	14.3	1.9	6.5	17.5	8.9	20.6	10.3	10.9	8.6	15.8
Dad negative as expected	40.2	39.5	29.0	31.4	50.9	41.9	36.8	36.0	38.5	24.2	41.3	42.9	34.2
Dad neutral as expected	13.9	10.9	19.4	2.9	11.3	8.1	14.0	6.7	14.7	10.3	8.7	8.6	15.8
Expected dad more negative	30.7	32.8	19.4	45.7	32.1	38.7	26.3	38.0	10.3	39.4	37.0	37.1	23.7
F37. Dad is now very supportive	61.8	58.5	58.8	61.5	56.5	52.2	65.2	50.0	69.2	54.5	63.5	52.5	58.1
F40. Who R talked to about pregnancy:													
other adult relatives	39.0	38.5	29.2	40.7	42.4	36.7	40.2	36.4	27.8	50.0	34.6	43.4	39.3
friends	45.1	43.9	37.5	38.9	50.6	43.3	44.3	45.5	35.2	45.7	37.2	52.8	44.6
someone working at school	10.3	10.7	12.5	7.4	11.8	14.4	7.2	13.6	5.6	8.7	6.4	15.1	12.5
someone working at church	2.9	3.7	0.0	3.7	5.9	6.7	1.0	4.5	3.7	2.2	5.1	5.7	0.0
someone working at clinic	55.5	49.2	56.3	51.9	43.5	40.0	57.7	40.9	57.4	47.8	53.8	49.1	42.9
F38. Felt comfortable/very comfortable telling friends about pregnancy	76.3	74.0	84.1	83.0	62.5	69.8	78.0	73.0	79.6	66.7	75.4	70.6	75.5
F41. Anyone persuaded to adopt	15.7	12.3	8.3	7.4	17.6	13.3	11.3	9.1	9.3	10.9	14.1	13.2	8.9
F43. Anyone persuaded to have abortion	36.3	37.4	25.0	31.5	48.2	43.3	32.0	40.9	20.4	45.7	34.6	50.9	28.6
F48. Ever considered abortion	32.6	35.8	22.9	24.1	50.6	38.9	33.0	37.9	13.0	56.5	34.6	45.3	28.6
F50. Why abortion not considered:													
R wants baby	22.6	25.0	35.1	31.7	9.5	25.5	24.6	34.1	25.5	15.0	19.6	24.1	32.5
abortion not right for R	32.4	23.3	32.4	14.6	23.8	14.5	30.8	7.3	31.9	10.0	19.6	20.7	30.0
against abortion/it's murder	43.6	44.2	27.0	48.8	54.8	49.1	40.0	53.7	27.7	55.0	43.1	62.1	32.5
F49. If considered, why abortion decided against:													
R wants baby	19.1	22.4	27.3	15.4	23.3	25.7	18.8	32.0	14.3	23.1	22.2	25.0	18.8
abortion not right for R	51.4	38.8	36.4	30.8	41.9	42.9	34.4	36.0	57.1	23.1	25.9	50.0	43.8
against abortion/it's murder	14.2	17.9	18.2	15.4	18.6	20.0	15.6	24.0	0.0	19.2	25.9	12.5	12.5
others against abortion	15.8	14.9	36.4	7.7	11.6	11.4	18.8	16.0	14.3	15.4	18.5	12.5	12.5
F51. R very glad about pregnancy now	83.0	81.6	97.9	83.3	71.1	74.4	88.4	81.8	96.3	71.7	76.9	81.1	88.9
F53. R knows a lot about childcare	41.8	45.5	33.3	51.9	48.2	51.1	40.2	53.0	25.9	63.0	51.3	50.9	32.1
F52. Mean # of weeks 1st prenatal visit	10.0	10.3	10.2	9.1	11.1	10.7	9.9	10.6	9.3	10.4	10.1	10.5	10.4
G. Pregnancy Experiences - Prior Pregnancies													
G1. Prior pregnancy scares- Yes	42.7	44.4	45.8	46.3	42.4	44.4	44.3	57.6	37.0	37.0	33.3	54.7	50.0
G2. Of these-had pregnancy test at clinic	58.7	56.6	59.1	64.0	50.0	50.0	62.8	55.3	55.0	64.7	61.5	55.2	53.6
G3. Of these-staff discussed contracep.	89.4	85.1	92.3	81.3	83.3	85.0	85.2	90.5	72.7	81.8	81.3	100.0	73.3
G4a. Actually obtained method that visit	51.1	50.0	41.7	53.3	52.9	42.1	56.0	47.6	36.4	54.5	62.5	50.0	33.3
G5. Ever had prior abortion	10.1	10.2	10.4	9.3	10.6	10.0	10.3	9.1	3.7	17.4	12.8	15.1	1.8
G11. Ever obtained info/services	66.5	64.0	66.0	63.0	63.5	60.7	67.0	68.2	46.3	71.7	58.4	77.4	58.9
G13. Ever used pills	36.5	32.1	31.3	25.9	36.5	24.4	39.2	25.8	20.4	47.8	30.8	43.4	23.2
Ever used condoms	75.8	78.6	64.6	74.1	89.4	84.4	73.2	83.3	50.0	100.0	88.5	84.9	58.9
Ever used depo-provera	7.6	7.0	10.4	7.4	4.7	8.9	5.2	12.1	1.9	4.3	2.6	13.2	7.1
Ever used foam/jelly/suppository	10.1	5.9	6.3	3.7	10.6	3.3	8.2	1.5	3.7	8.7	5.1	7.5	5.4
G14. Will use method after baby born	95.6	94.7	89.6	94.4	97.6	95.6	93.8	100.0	87.0	95.7	93.6	94.3	96.4

R=respondent; BD=baby's dad

*Non-Hispanic white and Asian respondents are not shown separately due to small sample size

Appendix Table 7. Percentage of respondents by selected questionnaire items, according to pregnancy intention at conception, age, race/ethnicity and county of residence. Unweighted.

Questionnaire item	State weighted total	Un-weighted total	Pregnancy intention			Age		Race/ethnicity*			County		
			Intended pregnancy	Did not care	Did not intend	15-16	17-18	Hispanic U.S. born	Hispanic Foreign	Black	Alameda	Santa Clara	Santa Cruz Monterey
G15. Method plan on using:													
pills (% of total)	42.7	41.7	33.3	37.0	49.4	38.9	44.3	48.5	42.6	34.8	41.0	41.5	42.9
condoms	17.0	19.3	8.3	16.7	27.1	21.1	17.5	19.7	7.4	28.3	25.6	18.9	10.7
Depo-Provera	29.2	29.4	29.2	29.6	29.4	35.6	23.7	28.8	14.8	41.3	26.9	26.4	35.7
natural family planning	3.4	3.2	4.2	5.6	1.2	4.4	2.1	1.5	7.4	0.0	1.3	1.9	7.1
foam	0.0	0.0	0.0	0.0	0.0	0.0	0.0	0.0	0.0	0.0	0.0	0.0	0.0
G16. Very easy to get contracep. in area	56.9	55.4	54.5	50.0	59.3	51.8	58.5	56.1	33.3	71.7	58.7	59.6	46.0
H. Knowledge and Attitudes Toward Abortion													
H1. Very easy to get abortion in area	36.0	34.8	23.8	28.9	45.1	32.5	37.2	33.3	18.5	39.1	34.8	44.4	25.0
H2. Major reasons difficult to get abortion:													
too expensive	38.3	42.6	40.0	46.3	41.7	43.8	41.5	45.5	44.4	41.3	46.2	39.6	40.4
nowhere nearby	14.8	16.0	25.0	7.5	16.7	17.2	14.9	15.2	16.7	10.9	15.8	15.4	17.0
parents would stop	47.3	47.3	51.1	43.4	47.6	47.2	47.4	39.4	59.3	41.3	48.1	37.7	55.6
difficult personal decision	80.6	76.8	80.4	77.8	74.1	77.5	76.0	78.8	74.1	69.6	70.1	79.2	83.6
parental consent law	78.7	78.0	79.2	68.5	83.3	79.8	76.3	81.8	64.8	80.4	74.4	83.0	78.2
H2g. Ever heard of parental consent law	29.1	29.9	19.1	22.6	40.5	27.0	32.6	28.8	18.5	41.3	35.1	26.4	25.9
H3. Friends ever had abortion	60.1	58.8	43.8	51.9	71.8	55.6	61.9	62.1	38.9	73.9	59.0	71.7	46.4
H4. R approves of friend's abortion	46.0	42.7	38.1	42.9	44.3	42.0	43.3	34.1	33.3	52.9	41.3	50.0	34.6
J. Other Experiences and Attitudes													
Ever in relationship with partner who:													
J1. kept R from doing things	30.2	26.7	35.4	20.4	25.9	24.4	28.9	30.3	16.7	28.3	23.1	34.0	25.0
J3. refused to use birth control	10.1	8.0	12.5	5.6	7.1	4.4	11.3	6.1	11.1	4.3	6.4	9.4	8.9
J5. hit or injured R	20.1	17.6	25.0	16.7	14.1	18.9	16.5	18.2	7.4	21.7	15.4	28.3	10.7
J7. Ever been raped	13.0	12.4	16.7	7.4	13.1	11.2	13.4	9.1	7.4	19.6	11.7	15.1	10.7
K. Background Information													
Characteristics of baby's father:													
K13. Same race/ethnicity as R	77.4	82.4	83.3	85.2	80.0	78.9	85.6	80.3	94.4	87.0	88.5	67.9	87.5
K12. Mean age	20.5	20.3	21.3	20.1	19.8	19.4	21.0	20.0	21.1	19.9	20.6	19.9	20.1
Mean difference in age	3.6	3.7	4.3	3.6	3.4	3.9	3.6	3.9	4.3	3.1	3.9	3.5	3.7
K15. High School complete or more	47.6	44.6	39.0	41.5	49.4	37.8	50.6	40.0	31.3	58.7	50.0	49.0	31.3
K16. Currently in School	38.3	42.5	31.9	43.4	48.1	51.2	34.7	39.4	22.2	55.6	42.1	41.5	44.2
K17. Currently employed	71.5	67.4	73.9	64.8	65.4	59.0	74.7	71.2	81.5	40.0	56.0	68.6	82.7
K20. Has other children	16.9	19.6	12.8	13.0	27.7	21.6	17.7	15.2	3.7	43.5	26.9	13.2	15.1
Characteristics of R's parents:													
K22. Biological parents currently married	36.3	32.6	47.9	37.0	21.2	21.1	43.3	21.2	66.7	15.2	30.8	24.5	42.9
K24. Mother employed	63.9	58.6	55.6	53.8	63.1	56.8	60.2	64.6	48.1	55.6	51.3	60.0	67.3
K27. Father employed	82.9	80.1	86.5	80.0	76.8	77.3	82.9	83.3	79.5	60.0	72.7	89.6	79.2
K30. In past year R was supported by:													
Parents	79.8	85.6	83.3	75.9	92.9	94.4	77.3	83.3	81.5	91.3	87.2	84.9	83.9
Self	62.1	56.1	47.9	57.4	60.0	43.3	68.0	48.5	46.3	71.7	50.0	69.8	51.8
Baby's father	73.4	73.3	81.3	83.3	62.4	74.4	72.2	75.8	68.5	76.1	74.4	69.8	75.0
Baby's father's parents	25.1	24.6	16.7	35.2	22.4	26.7	22.7	19.7	20.4	30.4	28.2	28.3	16.1
Other relatives	33.0	36.4	33.3	27.8	43.5	37.8	35.1	28.8	22.2	58.7	50.0	37.7	16.1
AFDC	20.8	23.0	22.9	22.2	23.5	18.9	26.8	19.7	7.4	50.0	32.1	24.5	8.9
K32. Currently on Medi-Cal	86.1	87.4	93.6	86.8	84.3	81.1	93.5	81.8	87.0	91.3	92.3	77.4	90.4
K33. Has private health insurance	23.8	18.2	10.4	11.1	27.1	20.0	16.5	21.2	1.9	21.7	12.8	32.1	12.5

R=respondent; BD=baby's dad

*Non-Hispanic white and Asian respondents are not shown separately due to small sample size

Appendix Table 7. Percentage of respondents by selected questionnaire items, according to pregnancy intention at conception, age, race/ethnicity and county of residence. Unweighted.

Questionnaire item	State weighted total	Un-weighted total	Pregnancy intention			Age		Race/ethnicity*			County		
			Intended pregnancy	Did not care	Did not intend	15-16	17-18	Hispanic U.S. born	Hispanic Foreign	Black	Alameda	Santa Clara	Santa Cruz Monterey
K35. Currently on AFDC	13.2	15.0	20.8	11.1	14.1	13.3	16.5	7.6	9.3	34.8	24.4	9.4	7.1
K38. Currently get WIC	69.2	74.7	78.7	72.2	74.1	72.2	77.1	66.7	85.2	84.8	87.2	57.7	73.2
L. Future													
L1. After baby, plans to live with:													
parent/adult relative	37.7	45.5	31.3	40.7	56.5	58.9	33.0	56.1	20.4	56.5	46.2	52.8	37.5
BD/BD's adult relative	53.0	45.5	70.8	51.9	27.1	33.3	56.7	42.4	72.2	21.7	41.0	41.5	55.4
L3. Primary babysitter will be:													
biological mom	29.3	35.0	23.8	34.0	41.9	40.0	30.1	37.9	34.0	35.0	40.6	40.0	20.5
other adult female relative	9.4	9.8	9.5	2.1	14.9	11.3	8.4	10.3	10.6	10.0	10.1	8.0	11.4
sister/cousin	13.4	9.2	14.3	6.4	8.1	5.0	13.3	6.9	14.9	2.5	10.1	6.0	11.4
friend	1.5	1.8	4.8	0.0	1.4	1.3	2.4	0.0	4.3	2.5	2.9	0.0	2.3
other sitter/daycare	19.8	20.2	26.2	19.1	17.6	22.5	18.1	29.3	10.6	17.5	11.6	30.0	22.7
baby's father	16.7	14.1	16.7	17.0	10.8	12.5	15.7	10.3	8.5	22.5	15.9	12.0	13.6
BD's family	9.8	9.8	4.8	21.3	5.4	7.5	12.0	5.2	17.0	10.0	8.7	4.0	18.2
L4. Mean number of children desired	2.3	2.2	2.4	2.3	2.0	2.1	2.3	2.4	2.3	1.9	2.0	2.3	2.4
L6. After baby will strongly/somewhat depend on:													
Own earnings	65.8	66.8	56.3	57.4	78.8	66.6	67.0	66.7	51.9	82.6	66.7	73.5	60.7
BD and his earnings	85.3	82.9	85.4	85.2	80.0	77.8	87.7	80.3	81.5	87.0	83.3	84.9	80.4
Parents	57.6	63.5	53.2	57.4	72.9	71.1	56.2	63.7	50.9	78.2	72.8	58.5	55.4
BD's parents	27.5	31.5	35.4	33.3	28.2	32.2	30.9	34.9	16.7	45.7	37.2	33.9	21.5
Other relative	17.0	20.6	14.6	19.3	24.8	24.5	16.9	22.7	9.3	29.5	25.0	20.8	14.3
Other friend	7.7	11.7	8.4	9.3	15.3	13.4	10.3	10.6	5.6	19.6	15.4	16.9	1.8
AFDC/social service	21.4	21.9	20.8	11.1	29.4	23.4	20.6	19.7	5.6	39.1	28.2	17.0	17.9
L7. Expect income/living situation after baby to be:													
same	46.6	47.0	38.3	50.0	50.0	46.7	47.3	50.8	55.8	36.4	53.9	37.7	46.2
better	37.5	35.4	48.9	30.8	30.5	35.6	35.2	29.2	30.8	43.2	32.9	35.8	38.5
worse	15.9	17.7	12.8	19.2	19.5	17.8	17.6	19.7	13.0	19.6	13.2	26.4	15.4
L8. If better, because:													
will get job/better job	54.3	53.1	52.2	56.3	52.0	56.3	50.0	63.2	43.8	47.4	48.0	57.9	55.0
more support from baby's father	25.0	25.0	21.7	18.8	32.0	37.5	12.5	57.9	6.3	10.5	12.0	36.8	30.0
will receive AFDC	6.3	7.8	4.3	6.3	12.0	9.4	6.3	10.5	0.0	10.5	4.0	10.5	10.0
will move out	19.2	10.9	13.0	6.3	12.0	9.4	12.5	0.0	0.0	15.8	8.0	21.1	5.0
will marry/cohabit with baby's father	7.6	7.8	13.0	6.3	4.0	3.1	12.5	0.0	12.5	10.5	8.0	5.3	10.0
more stability/direction	11.5	7.8	8.7	12.5	4.0	6.3	9.4	5.3	12.5	5.3	8.0	5.3	10.0
L8. If worse, because:													
more expenses	75.6	68.8	66.7	70.0	68.8	68.8	68.8	84.6	42.9	66.7	60.0	78.6	62.5
harder to work/can't work	9.5	12.5	16.7	0.0	18.8	6.3	18.8	0.0	14.3	22.2	30.0	0.0	12.5
will move/not have parents' support	2.9	6.3	0.0	0.0	12.5	12.5	0.0	7.7	0.0	11.1	10.0	7.1	0.0
L9. Disadvantages of teen vs. older motherhood:													
financial problems	16.2	13.4	12.5	13.0	14.1	13.3	13.4	10.6	9.3	13.0	10.3	17.0	14.3
interferes with edu/career/plans	42.2	39.0	18.8	44.4	47.1	35.6	42.3	39.4	42.6	34.8	34.6	43.4	41.1
increased responsibilities/limitations	27.3	32.6	22.9	31.5	38.8	41.1	24.7	53.0	11.1	30.4	24.4	41.5	35.7
not prepared/independent	25.8	21.9	18.8	18.5	25.9	20.0	23.7	22.7	16.7	21.7	12.8	34.0	23.2
no disadvantages/no difference	17.7	18.7	37.5	18.5	8.2	17.8	19.6	9.1	27.8	21.7	26.9	11.3	14.3
L10. Advantages of teen vs. older motherhood:													
child itself/love/companionship	15.3	13.4	12.5	16.7	11.8	12.2	14.4	13.6	22.2	4.3	10.3	13.2	17.9

R=respondent; BD=baby's dad

*Non-Hispanic white and Asian respondents are not shown separately due to small sample size

Appendix Table 7. Percentage of respondents by selected questionnaire items, according to pregnancy intention at conception, age, race/ethnicity and county of residence. Unweighted.

Questionnaire item	State weighted total	Un-weighted total	Pregnancy intention			Age		Race/ethnicity*			County		
			Intended pregnancy	Did not care	Did not intend	15-16	17-18	Hispanic U.S. born	Hispanic Foreign	Black	Alameda	Santa Clara	Santa Cruz Monterey
less generation gap	9.6	8.6	10.4	9.3	7.1	8.9	8.2	9.1	3.7	10.9	7.7	9.4	8.9
will be a youthful/energetic mom	11.5	9.6	12.5	7.4	9.4	10.0	9.3	15.2	1.9	6.5	6.4	17.0	7.1
self improvement/occupation	15.4	18.2	18.8	16.7	18.8	20.0	16.5	18.2	16.7	21.7	17.9	20.8	16.1
gets childbearing out of the way	5.5	6.4	2.1	5.6	9.4	5.6	7.2	3.0	1.9	17.4	10.3	5.7	1.8
still be young/alive when child is grown	12.7	11.8	8.3	14.8	11.8	13.3	10.3	13.6	14.8	4.3	7.7	11.3	17.9
no advantages/no difference	20.4	22.5	25.0	16.7	24.7	23.3	21.6	22.7	24.1	26.1	20.5	18.9	28.6
L11. Why having baby, meaning to R:													
R wants baby	28.3	27.3	45.8	29.6	15.3	24.4	29.9	25.8	35.2	21.7	26.9	32.1	23.2
Chose not to abort/adopt	13.1	15.5	4.2	13.0	23.5	15.6	15.5	18.2	5.6	26.1	19.2	18.9	7.1
Too late/pregnant/accepting	19.2	20.3	6.3	20.4	28.2	23.3	17.5	27.3	14.8	17.4	16.7	20.8	25.0
Love/companionship	6.3	8.6	12.5	7.4	7.1	11.1	6.2	10.6	3.7	13.0	6.4	11.3	8.9
Meaningful/positive experience	44.9	48.1	66.7	46.3	38.8	37.8	57.7	50.0	63.0	41.3	51.3	50.9	41.1
Will improve self/life	19.2	15.5	12.5	11.1	20.0	16.7	14.4	22.7	7.4	10.9	12.8	20.8	14.3
Want motherhood	19.0	18.7	22.9	22.2	14.1	16.7	20.6	18.2	16.7	19.6	19.2	20.8	16.1
Baby's father-related reasons	12.1	10.7	16.7	9.3	8.2	11.1	10.3	7.6	14.8	6.5	9.0	9.4	14.3

R=respondent; BD=baby's dad

*Non-Hispanic white and Asian respondents are not shown separately due to small sample size

**The
Alan
Guttmacher
Institute**

New York and Washington

A Not-for-Profit Corporation
for Reproductive Health
Research, Policy Analysis
and Public Education

120 Wall Street
New York, NY 10005
Telephone: 212 248-1111
FAX: 212 248-1951



**FACTORS AFFECTING TEENAGERS'
PREGNANCY DECISIONS:**

**A California Study of Why Young Women Carry a
Pregnancy to Term**

Funded by: Principal Investigator: **Jennifer Frost, Dr.P.H**
The California Wellness Foundation

AGI SURVEY OF TEENS GIVING BIRTH

July 1996

English Questionnaire

AGI Survey of Teens Giving Birth

SCHEDULING INFORMATION

SCREENER:

- S1. Date respondent completed recruitment form: _____ (5-8)
- S2. Clinic respondent recruited from: _____ (9-10)
- S3. Date respondent completed screener: _____ (11-14)
- S4. Location where screener was completed:
 - At the clinic 1 (15)
 - Specify site: _____
 - On the phone 2
 - At an interviewing site 3
 - Specify site: _____
 - Other 4
 - Specify site: _____
- S5. Interviewer I.D. for person administering screener: _____ (18-19)

INTERVIEW:

- S6. Date respondent completed interview: _____ (20-23)
- S7. Location where interview was conducted:
 - At the clinic 1 (24)
 - Specify site: _____
 - At an interviewing site 2
 - Specify site: _____
 - Respondent's Home 3
 - Other 4
 - Specify site: _____
- S8. Presence of others during the interview: Please list all other individuals present at any time during the interview and the percentage of time they were present: _____ (27)
- S9. Interviewer I.D. for person administering questionnaire: _____ (31-32)
- S10. Time interview began: _____
- S11. Time interview ended: _____
- S12. Number of minutes: _____ (33-35)
- S13. Language of Interview:..... English 1
- Spanish 2

AGI Survey of Teens Giving Birth

SCREENER

S14. First, I just need to confirm for our records: Are you pregnant?
 YES1 (37)
 NO (NOT ELIGIBLE).....2

S15. How many weeks or months pregnant are you now?
 _____ WEEKS _____ MONTHS (38-39)

(IF RESPONDENT IS < 12 WEEKS OR < 3 MONTHS PREGNANT, COMPLETE SCREENER AND SCHEDULE INTERVIEW TO OCCUR AFTER SHE IS AT LEAST 12 WEEKS OR 3 MONTHS PREGNANT)

S16. In what month and year are you expecting to deliver your baby?
 _____ MONTH _____ YEAR (40-43)

(IF RESPONDENT SAYS SHE DOESN'T EXPECT TO DELIVER BECAUSE SHE PLANS TO HAVE AN ABORTION, SHE IS NOT ELIGIBLE)

S17. How old are you?
 _____ YEARS OLD (IF \hat{U} 14 OR \acute{U} 19 NOT ELIGIBLE) (44-45)

S18. When were you born?
 (46-51) _____ MONTH _____ DAY _____ YEAR

S19. Are you currently married?
 YES (ASK S20)1 (52)
 NO (SKIP TO S21)2

S20. Were you already married when you found out you were pregnant this time?
 YES (NOT ELIGIBLE).....1 (53)
 NO2

S21. Have you ever given birth before this pregnancy?
 YES (NOT ELIGIBLE).....1 (54)
 NO2

S22. After you deliver your baby, are you planning to place up it for adoption?
 YES (NOT ELIGIBLE).....1 (55)
 NO2

IF NOT ELIGIBLE ON ANY ITEM, DISCONTINUE INTERVIEW

AGI Survey of Teens Giving Birth

SCHOOL AND WORK: EXPERIENCES AND EXPECTATIONS

I'm going to begin with a series of questions about school and work.

A1. First, I'd like to find out about any schools that you have been going to. In the past year, have you attended school for the entire regular school year?

[INTERVIEWER: CLARIFY ONLY IF NECESSARY: By school, we mean a school or school program where you are working toward a high school diploma, a GED (General Equivalency Degree), some other high school equivalent, or a college or vocational degree.]

- YES (SKIP TO A3)1 (56)
- NO (GO TO A2a).....2
- DK.....7

A2a. When did you stop going to school, in what month and year?

(57-60) _____ MONTH _____ YEAR

A2b. Why did you stop going to school?

(61-70) _____

A3. What is the highest grade of school that you have completed?

_____ GRADE (71-72)

COLLEGE13

A4. During the past year, before you became pregnant, were you involved in any of the following organized activities in school or outside of school: As I read this list, please tell me "yes" or "no"

- | | YES | NO | |
|--|--------|----|------|
| a. Community youth organizations like "girls" clubs, Y Teens, or Girl Scouts | 1..... | 2 | (73) |
| b. Sports, cheer-leading or gymnastics, | 1..... | 2 | (74) |
| c. Music, dance, theater or other performing arts, | 1..... | 2 | (75) |
| d. Church youth groups or other church activities, | 1..... | 2 | (76) |
| e. Hobby clubs like photography or cooking, etc. | 1..... | 2 | (77) |
| f. Student government or other student clubs, or | 1..... | 2 | (78) |
| g. Any other organized activities? (SPECIFY) | 1..... | 2 | (79) |

(80-83) _____

A5. In school, how interested would you say you were in the courses you were taking? Would you say you were:

Very interested,	1	(84)
Somewhat interested, or.....	2	
Not at all interested?.....	3	
DK.....	7	

A6. In school, compared to others in your grade, how do you think you did? Would you say you did:

Better than most people in your grade,	1	(85)
Worse than most people in your grade, or	2	
About the same as others in your grade?.....	3	
DK.....	7	

A7. Thinking about the future, after the baby is born, do you plan to attend school or some other education program?

YES (SKIP TO A9)	1	(86)
NO (ASK A8)	2	
DK.....	7	

A8. Do you think you would have attended school if you didn't have a baby to look after?

YES.....	1	(87)
NO.....	2	
DK.....	7	

A9. Again, thinking about the future, if you could do just what you wanted to and nothing stood in your way, how far would you like to go in school? Would you like to:

Stop where you are now,	1	(88)
Finish high school or your GED, but go no further,	2	
Get vocational or trade school training, or.....	3	
Go on to college?.....	4	
DK.....	7	

A10. Now, tell me what you think will really happen? Do you think . . .

You won't finish high school,.....	1	(89)
You'll finish high school or your GED, but go no further,	2	
You'll get vocational or trade school training, or.....	3	
You'll go to college?.....	4	
DK.....	7	

A11. During the past year have you had a job (including jobs like baby-sitting)?

YES (GO TO A12a).....	1	(90)
NO (SKIP TO A13)	2	

A12a. Are you working now?

YES.....1 (91)
NO.....2

A12b. Is/was it full-time, part-time, or something you do/did occasionally?

FULL-TIME.....1 (92)
PART-TIME.....2
OCCASIONAL3

A12c. What kind of work do/did you do?

(93-94)

A12d. Do you plan to work/keep working after the baby is born?

YES.....1 (95)
NO.....2
DK.....7

A13. Thinking about the future, after the baby is born, which of the following best describes what you think will happen in terms of your getting a job. Would you say you: [READ, CIRCLE ONE RESPONSE]

a. Will work as soon as the baby is born, [ASK A14].....1 (96)
b. Will work after getting more education or training, [ASK A14].....2
c. Will work when your baby is older, or [ASK A14].....3
How old? _____ (97-98)
d. You will stay home with your baby and not work? (SKIP TO A15)4
OTHER RESPONSE (SPECIFY).....5

(99-100)

DK.....7

A14. What kind of work do you think you will do?

(101-102)

A15. Now, thinking back before you became pregnant, did you have any plans or ideas about what you wanted to do with your life? What?

(103-112)

B. RELATIONSHIP WITH FRIENDS

Now, I'd like to ask you some questions about your close friends who are teenagers.

B1. Counting both girls and guys, how many close friends do you have?
_____ NUMBER [IF 0, GO TO SECTION C] (113-114)

B2. How many of these close friends are girls and how many are guys?
_____ a. GIRLS [IF 0 DON'T ASK B3, B5-B7] (115-116)
_____ b. GUYS [IF 0 DON'T ASK B4, B8-B9] (117-118)

B3. How many of your close girlfriends have been going to school during the last regular school year? Would you say:
All of them,1 (119)
Some of them, or2
None of them?3
DK.....7

B4. How many of your close "guy friends" have been going to school during the last regular school year? Would you say:
All of them,1 (120)
Some of them, or2
None of them?3
DK.....7

B5. How many of your close girlfriends are expecting a baby within the next few months?
_____ NUMBER CURRENTLY EXPECTING (123-124)

B6. How many of your close girlfriends have children of their own?
_____ NUMBER WITH CHILDREN (IF 0 SKIP TO B8) (121-122)

B7a. Tell me a little bit about the experiences of your girlfriend(s) with children.
[PAUSE, RECORD WHAT SHE FIRST RESPONDS, THEN GO ON:]
From what you can tell, what is the best thing that having a child has meant for her/them?
(125-134)

B7b. And, from what she/they tell you, or what you see, what are the problems that come with having children?

(135-144)

B7c. Overall, thinking about your girlfriend's life (lives) since she/they had a baby, has it mostly become better, mostly become worse, or did it not change much?

- MOSTLY BETTER.....1 (145)
- MOSTLY WORSE2
- NOT CHANGED.....3
- DK/NOT SURE7

B8. What about your friends who are guys, how many of them have fathered children of their own?

_____ NUMBER WITH CHILDREN (IF 0 SKIP TO C1) (146-147)

B9. As far as you know, how much financial support (do these/does this) father(s) provide to their/his children? Would you say:

[IF R SAYS IT VARIES FOR DIFFERENT FRIENDS, ASK HOW IT IS FOR MOST OF THE GUYS WHO ARE FATHERS THAT SHE KNOWS]

- A lot of financial support.....1 (148)
- Some support.....2
- Only a little support, or.....3
- No financial support?.....4
- DK/NOT SURE (DO NOT READ).....7

C. CURRENT LIVING ARRANGEMENTS AND RELATIONSHIP WITH FAMILY

Now, I'd like to ask you some questions about the people you live with and your family members.

C1. First, how long have you lived at the address where you are living now?

(149-150) _____ YEARS [IF MORE THAN ONE YEAR SKIP TO C3]

_____ MONTHS [IF ONE YEAR OR LESS GO TO C2] (151-152)

C2. Why did you move recently? Was it because of your pregnancy or for some other reason? (PROBE)

(153-158)

C3. Who do you live with now? Just tell me the initials or first name of each person and tell me their relationship to you.

(PROBE FOR EVERYONE LIVING IN THE HOUSEHOLD-IF LARGE NUMBER OF UNRELATED ADULTS, IE LIVING IN GROUP HOME, JUST LIST NUMBER; IF EXTENDED RELATIVES, PROBE FOR MATERNAL/PATERNAL RELATIONSHIPS, I.E. MATERNAL GRANDMOTHER OR AUNT, ETC.)

(159-178)

INTERVIEWER INSTRUCTIONS:

CONFIRM MOM OR DAD IN HOUSEHOLD ARE BIOLOGICAL PARENTS

R CURRENTLY LIVES WITH BIOLOGICAL MOM: YES: SKIP TO C9
 NO: ASK C4-C8

R CURRENTLY LIVES WITH BIOLOGICAL DAD: YES: DEPENDS ON MOM
 NO: ASK C9-C13

IF BOTH ARE YES: SKIP TO C14

NOT LIVING WITH MOTHER:

C4. How long ago did you live with your biological mother?

_____ NUMBER OF YEARS AGO

(179-180)

_____ NUMBER OF MONTHS AGO

(181-182)

C5. Why did you stop living with your (biological) mother?

(183-188)

IF MOTHER IS DECEASED SKIP TO C7

C6. How often do you usually have contact with your mother? Would you say :
(IF NECESSARY, SAY: By contact I mean see, talk to, or get mail from)

- At least once a week,1
- At least once a month,.....2
- Every few months,3
- At least once a year,4
- Less than once a year, but you know how to contact her or.....5
- You don't know how to contact her?.....6
- DOES NOT APPLY, MOTHER IS DECEASED7

(189)

- C7. Other than your (biological) mother, is there any other adult woman who you currently have regular contact with who has taken care of you, like a “mother”?
- YES (ASK C8)1 (190)
 NO (SKIP TO C9)2

C8a. What is this person’s relationship to you?
 [PROBE FOR MATERNAL/PATERNAL RELATIONSHIPS]

(191-192)

C8b. So that I know how to refer to her in later questions, please tell me her first name or the name you use to talk about her.

C8c. Are you currently or did you ever live with (NAME IN C8b)?

- YES, CURRENTLY LIVING WITH.....1 (193)
 YES, LIVED WITH IN PAST2
 NO.....3

NOT LIVING WITH FATHER:

C9. How long ago did you live with your biological father?

_____ NUMBER OF YEARS AGO (194-195)

_____ NUMBER OF MONTH AGO (196-197)

C10. Why did you stop living with your (biological) father?

(198-203)

IF FATHER IS DECEASED SKIP TO C12.

C11. How often do you usually have contact with your (biological) father? Would you say: (IF NECESSARY, SAY: By contact I mean see, talk to, or get mail from)

- At least once a week,1 (204)
 At least once a month,2
 Every few months,3
 At least once a year,4
 Less than once a year, but you know how to contact him or.....5
 You don’t know how to contact him.....6
 DOES NOT APPLY, FATHER IS DECEASED.....7

C12. Other than your (biological) father, is there any other adult man who you currently have regular contact with who has taken care of you, like a “father”?

- YES (ASK C13)1 (205)
 NO (SKIP TO C14)2

C13a. What is this person's relationship to you?

[PROBE FOR MATERNAL/PATERNAL RELATIONSHIPS]

(206-207)

C13b. So that I know how to refer to him in later questions, please tell me his first name or the name you use to talk about him.

C13c. Are you currently or did you ever live with (NAME IN C13b)?

YES, CURRENTLY LIVING WITH.....	1	(208)
YES, LIVED WITH IN PAST	2	
NO.....	3	

INTERVIEWER INSTRUCTIONS:

CHECK

USE "MOTHER" IF:	R LIVES WITH MOTHER, OR	
	R HAS WEEKLY OR MONTHLY CONTACT (C6=1,2)	_____
USE (NAME IN C8b) IF:	R <u>DOES NOT</u> LIVE WITH MOTHER AND	
	R <u>DOES NOT</u> HAVE WEEKLY OR MONTHLY CONTACT AND	
	R HAS A "MOTHER FIGURE" IN C7	_____
IF NO CONTACT WITH MOTHER AND NO "MOTHER FIGURE" SKIP MOTHER QUESTIONS		_____

USE "FATHER" IF:	R LIVES WITH FATHER, OR	
	R HAS WEEKLY OR MONTHLY CONTACT (C11=1,2)	_____
USE (NAME IN C8b) IF:	R <u>DOES NOT</u> LIVE WITH FATHER AND	
	R <u>DOES NOT</u> HAVE WEEKLY OR MONTHLY CONTACT AND	
	R HAS A "FATHER FIGURE" IN C7	_____
IF NO CONTACT WITH FATHER AND NO "FATHER FIGURE" SKIP FATHER QUESTIONS		_____

C14. How close are you with your mother/(NAME IN C8B) ? Would you say . . .

Very close	1	(209)
Somewhat close.....	2	
Not very close, or.....	3	
Not close at all?.....	4	
DK.....	7	

C15. When you have a personal problem or something that is worrying you, how often do you discuss it with your mother/(NAME IN C8B)? Would you say. . .

All of the time	1	(210)
Very often.....	2	
Once in a while, or.....	3	
Never?.....	4	
NA-HAS NO PROBLEMS (DO NOT READ).....	8	

C16. How close are you with your father/(NAME IN C13B)? Would you say . . .

Very close	1	(211)
Somewhat close.....	2	
Not very close, or.....	3	
Not close at all?.....	4	
DK.....	7	

- C17. When you have a personal problem or something that is troubling you, how often do you discuss it with your father/(NAME IN C18B)? Would you say . . .
- | | | |
|---------------------------------------|---|-------|
| All of the time | 1 | (212) |
| Very often..... | 2 | |
| Once in a while, or..... | 3 | |
| Never?..... | 4 | |
| NA-HAS NO PROBLEMS (DO NOT READ)..... | 8 | |
- C18. How many sisters and brothers do you have altogether?
- | | |
|--|-----------|
| _____ a. NUMBER OF SISTERS [IF 0 SKIP TO C21] | (213-214) |
| (215-216) _____ b. NUMBER OF BROTHERS [IF 0 DON'T ASK C21] | |
- ASK IF R HAS 1+ SISTERS:
- C19. Do any of/does your sister(s) have any children of her/their own?
- | | | |
|------------------------|---|-------|
| YES (ASK C20) | 1 | (217) |
| NO (SKIP TO C21) | 2 | |
- C20. Did (any of) your sister(s) have a baby before she was/they were 19?
- | | | |
|----------|---|-------|
| YES..... | 1 | (218) |
| NO..... | 2 | |
- ASK IF R HAS 1+ BROTHERS:
- C21. Do any of/does your brother(s) have any children of their/his own?
- | | | |
|------------------------|---|-------|
| YES (ASK C22) | 1 | (219) |
| NO (SKIP TO C23) | 2 | |
- C22. Did (any of) your brother(s) father a child before he was/they were 19?
- | | | |
|----------|---|-------|
| YES..... | 1 | (220) |
| NO..... | 2 | |

D. RELATIONSHIPS WITH GUYS

Now, I'd like to find out about your relationships with guys.

D1. How old were you the first time you had sexual intercourse (went all the way)?
_____ YEARS OLD (221-222)

D2. The first time that you had sex, did you or your partner use any form of birth control or do anything to prevent pregnancy or sexually transmitted diseases?
YES (ASK D3)1 (223)
NO (SKIP TO D4)2
DK.....7

D3. What method(s) did you use?
[HAND R METHOD CARD]

(224-225)

D4. How old was your partner the first time you had sex?
_____ AGE (226-227)

D5. Before this pregnancy, did your mother/(NAME IN C8B) know that you had had sexual intercourse (gone all the way)?
YES.....1 (228)
NO.....2
NOT SURE IF MY MOTHER KNEW (DO NOT READ).....3
GOT PREGNANT THE FIRST TIME I HAD SEX (DO NOT READ).....4

D6. Before this pregnancy, did your father/(NAME IN C13B) know that you had had sexual intercourse (gone all the way)?
YES.....1 (229)
NO.....2
NOT SURE IF MY FATHER KNEW (DO NOT READ)3
GOT PREGNANT THE FIRST TIME I HAD SEX (DO NOT READ).....4

D7. Among the guys you have dated, how many of them have you had a "steady" relationship with?
_____ NUMBER OF STEADY RELATIONSHIPS
(230-231)

D8. Are you currently in a "steady" relationship with anyone?
YES (ASK D9)1 (232)
NO (SKIP TO D10)2

D9. Is this relationship with the father of the baby you are carrying?
YES.....1 (233)
NO.....2

Now, I'd like to find out a little bit about your relationship with the father of your baby.

D10. First, what was your relationship to him at the time you got pregnant? Was he your boyfriend, another type of friend or acquaintance or are you not sure who the father is?

[DO NOT READ]

BOYFRIEND (ASK D11-D18)1 (234)
FRIEND OR ACQUAINTANCE (ASK D11- D18).....2
A MALE RELATIVE (SKIP TO E1)3

(SPECIFY: _____)
(235-236)

SOMEONE ELSE (SPECIFY: _____)(SKIP TO E1)4 (237-238)
DOESN'T KNOW WHO FATHER IS (SKIP TO E1).....5

IF BOYFRIEND, FRIEND OR ACQUAINTANCE:

D11. At the time you got pregnant, how long had you and he been seeing each other?

_____ YEARS

_____ MONTHS

_____ NEVER DATED

(239-240)

D12. Thinking about the first time you had sex with the father of your baby, which of the following statements were reasons why you had sex with him the first time? As I read each reason, tell me "yes" or "no".

	YES	NO	
a. You really liked him?	1.....	2.....	(241)
b. You planned on marrying him?.....	1.....	2.....	(242)
c. You thought you would lose him as your boyfriend if you didn't have sex?.....	1.....	2.....	(243)
d. You wanted to have a baby?.....	1.....	2.....	(244)
e. Most of your girlfriends had done it?	1.....	2.....	(245)
f. You just wanted to?.....	1.....	2.....	(246)
g. You were curious?.....	1.....	2.....	(247)
h. It just happened?	1.....	2.....	(248)
i. You were forced to do it?	1.....	2.....	(249)
j. Or was there some other reason? (SPECIFY):.....	1.....	2.....	(250)

(251-252)

D13. What is your relationship now, is he your boyfriend, are you just friends or do you not see him at all?

BOYFRIEND1 (253)
FRIEND2
NO CONTACT3
OTHER RELATIONSHIP (SPECIFY).....4

(254-255)

D14. Taking everything into consideration, how likely is it that you and the baby's father will get married within the next few years?

- Very likely, (SKIP TO E1)1 (256)
- Somewhat likely, (ASK D15).....2
- Not too likely, or (ASK D15).....3
- Not at all likely? (ASK D15).....4
- VOLUNTEERED AFTER ONE PROBE: Have no idea7

D15. Why do you think it's not likely that you and the baby's father will marry?

(257-262)

E. CIRCUMSTANCES RELATED TO BECOMING PREGNANT

Now, thinking back to the time before you got pregnant, at that time what did you think would be the good things and bad things about being pregnant and having a baby? First the good things or advantages:

E1. Before you became pregnant, what did you think would be good about being pregnant and having a baby?
[PROBE FOR ALL]

(263-272)

E2. And, what did you think would be the bad things or disadvantages of being pregnant and having a baby? [PROBE FOR ALL]

(273-282)

E3. When you became pregnant, would you say you wanted to get pregnant at that time, you didn't want to get pregnant, or you didn't care one way or another?

- YES, WANTED PREGNANCY1 (283)
- NO, DIDN'T WANT PREGNANCY2
- DIDN'T CARE/AMBIVALENT/NOT SURE3

E4. Why?

(284-293)

E5. And what about the father of your baby, when you became pregnant, would you say he wanted you to become pregnant at that time, he didn't want you be become pregnant, or he didn't care one way or another?

- YES, WANTED PREGNANCY.....1 (294)
- NO , DIDN'T WANT PREGNANCY2
- DIDN'T CARE/AMBIVALENT/NOT SURE3
- DK WHAT HE WANTED (SKIP TO E5]7

E6. Why?

(295-304)

E7. During the month before you became pregnant, were you or your baby's father using any method of contraception or doing anything to prevent pregnancy?

- YES (SKIP TO E8b)1 (305)
- NO (ASK E8a)2

NOT USING ANY METHOD:

E8a. What is the main reason you were not using any contraception?
[PROBE]

(306-309)

SKIP TO E9

USING A METHOD:

E8b. Which of these methods were you using?
[HAND R METHOD CARD]

(310-311)

ASK E8c IF METHOD IS: CONDOMS, DIAPHRAM, CAP, FOAM, SUPPOSITORY, SPONGE, PILLS, WITHDRAWAL

E8c. Now, thinking about what happened when you had sex at or around the time you got pregnant, was/were (METHOD IN E8b) actually used or did you skip using the method at that time?

- USED ALL METHODS (GO TO E9).....1 (312)
- SKIPPED SOME METHOD (ASK E8d).....2
- Which method? _____
- SKIPPED ALL METHODS (ASK E8d).....3
- OTHER RESPONSE (ASK E8d)4
- DK.....7

E8d. Why did you skip using your method(s)?

(313-318)

E9. Thinking about what happened when you had sex at or around the time you got pregnant, did your baby's father use any drugs or drink more than 2 glasses of alcohol before you had sex that time?

- YES.....1 (319)

NO.....2
DK.....7

E10. And what about you? Did you use any drugs or drink more than 2 glasses of alcohol before you had sex that time?

YES.....1 (320)
NO.....2
DK.....7

F. PREGNANCY DECISIONS

Now, I'd like to change topics. In this section, I have some questions about what happened and who you talked to after you learned you were pregnant.

F1. First, how did you know definitely that you were pregnant?

PREGNANCY TEST AT CLINIC/DOCTOR.....1 (321)
HOME PREGNANCY TEST.....2
JUST KNEW.....3

F2. How many weeks or months pregnant were you when you knew definitely that you were pregnant?

(322-323) _____ # WEEKS _____ # MONTHS _____DK

F3. Once you learned that you were definitely pregnant, how did you feel emotionally? [PROBE]

(324-333) _____

F4. Who was the first person you told after learning that you were definitely pregnant?

(334-335) _____

F5. How long had you known you were pregnant before you told anyone about it?

(336-338) _____ DAYS _____ WEEKS _____ MONTHS

IF ONE WEEK OR MORE ASK F6, ELSE SKIP TO F7:

F6. Why did you wait before telling anyone?

(339-348) _____

F7. When you first learned you were pregnant, which of these options did you think about doing? Did you think about:
[HAND R OPTION CARD]

	YES	NO	
[HAND R OPTION CARD]			
a. Giving birth and living at home,.....	1	2	(349)
b. Giving birth and living on your own,.....	1	2	(350)
c. Giving birth and getting married to the baby's father.....	1	2	(351)
d. Giving birth and living with the baby's father without getting married, ⁽³⁵²⁾	1	2	2
e. Giving birth and putting the baby up for adoption,.....	1	2	(353)
f. Having an abortion, or.....	1	2	(354)
g. Doing something else (SPECIFY):.....	1	2	(355)

(356-357)

F8a. When you first learned you were pregnant, which of these options did you favor most?
[WRITE OPTION LETTER]

(358)

F8b. At that time, were you very sure about wanting to keep the baby or did you need some time to think about what you were going to do?

VERY SURE ABOUT KEEPING BABY	1	(359)
NEEDED TIME TO THINK.....	2	
OTHER MENTIONS, SPECIFY:.....	3	

(360-361)

F9. Why did you decide to keep the baby?

(362-371)

F10. Does the baby's father know that you are pregnant?

YES (ASK F11).....	1	(372)
NO (SKIP TO F18).....	2	

F11. What was his reaction when he first learned that you were pregnant?

(373-382)

F12. After the baby's father learned of your pregnancy, which options did you and he talk about regarding what you should do about your pregnancy? Did you talk about:

[HAND R OPTION CARD]

	YES	NO	
a. Giving birth and living at home,.....	1.....	2	(383)
b. Giving birth and living on your own,.....	1.....	2	(384)
c. Giving birth and getting married to the baby's father,.....	1.....	2	(385)
d. Giving birth and living with the baby's father without getting married,.....	1.....	2	(386)
e. Giving birth and putting the baby up for adoption,.....	1.....	2	(387)
f. Having an abortion, or.....	1.....	2	(388)
g. Doing something else (SPECIFY):.....	1.....	2	(389)

(390-391)

IF ALL NO, SKIP TO F14:

F13a. Which one of these options did the baby's father most want you to do when he first learned you were pregnant? [WRITE OPTION LETTER]

(392)

F13b. Which one of these options does the baby's father most want you to do now? [WRITE OPTION LETTER]

(393)

F14. Would you say that when the baby's father first learned you were pregnant, was he:

Very happy.....	1	(394)
Somewhat happy.....	2	
Somewhat upset.....	3	
Very upset.....	4	
DIDN'T CARE (DO NOT READ).....	5	
DK.....	7	

F15. Now how does he feel about your pregnancy, would you say:

Very happy.....	1	(395)
Somewhat happy.....	2	
Somewhat upset.....	3	
Very upset.....	4	
DOESN'T CARE (DO NOT READ).....	5	
DK.....	7	

F16. Has the baby's father come with you to any of your prenatal care appointments?

YES.....	1	(396)
NO.....	2	

F17. Do you expect that he will be with you in the hospital when the baby is born?

YES.....1 (397)
NO.....2

F18. Does your mother/(NAME IN C8B) know about your pregnancy?

YES (ASK F19).....1 (398)
NO (SKIP TO F28).....2

F19. How did she find out about your pregnancy?

_____ (399-402)

F20. How many months pregnant were you when she learned you were pregnant?

_____ months (403-404)

INTERVIEWER CHECK F2: IF LESS THAN F20 (GO TO F21)
IF SAME AS F20 (SKIP TO F22)

F21. Why didn't you tell your mother/(NAME IN C8B) when you first learned you were pregnant?

(405-414)

F22. What was your mother's/(NAME IN C8b) reaction when she found out about your pregnancy?

_____ (415-424)

F23. Is this the way you thought she would react or did you expect her to do or say something else (what?)?

_____ (425)
_____ (426-435)

F24. After your mother/(NAME IN C8B) learned of your pregnancy, which options did you talk about with her regarding what you should do about your pregnancy? Did you talk about:
[HAND R OPTION CARD]

	YES	NO	
a. Giving birth and living at home,.....	1.....	2.....	(436)
b. Giving birth and living on your own,.....	1.....	2.....	(437)
c. Giving birth and getting married to the baby's father.....	1.....	2.....	(438)
d. Giving birth and living with the baby's father without getting married,.....	1.....	2.....	(439)
e. Giving birth and putting the baby up for adoption,.....	1.....	2.....	(440)
f. Having an abortion, or.....	1.....	2.....	(441)
g. Doing something else (SPECIFY):.....	1.....	2.....	(442)
			(443-444)

IF ALL NO, SKIP TO F27

F25. Which option did your mother/(NAME IN C8b) seem to favor at first?
[WRITE OPTION LETTER]

(445)

F26. Which of these options does she favor now?
[WRITE OPTION LETTER]

(446)

F27. Overall, how supportive is your mother now regarding your pregnancy?
Would you say she is . . .

Very supportive,.....	1.....		(447)
Somewhat supportive,.....	2.....		
Neutral or doesn't care, or	3.....		
Not at all supportive?	4.....		
DK.....	7.....		

F28. Does your father/(NAME IN C13B) know about your pregnancy?

YES (ASK F29).....	1.....		(448)
NO (SKIP TO F38).....	2.....		
DK.....	7.....		

F29. How did he find out about your pregnancy?

(449-452)

F30. How many months pregnant were you when he learned you were pregnant?

_____ months

(453-454)

INTERVIEWER CHECK F2: IF LESS THAN F30 (GO TO F31)
IF SAME AS F30 (SKIP TO F32)

F31. Why didn't you tell your father/(NAME IN C13B) when you first learned you were pregnant?

(455-464)

F32. What was your father's/(NAME IN C13B) reaction when he found out about your pregnancy?

(465-474)

F33. Is this the way you thought he would react or did you expect him to do or say something else (what?)?

(475)

(476-485)

F34. After your father learned of your pregnancy, which options did you talk about with him regarding what you should do about your pregnancy? Did you talk about:

YES NO

[HAND R OPTION CARD]

- a. Giving birth and living at home,.....1.....2 (486)
- b. Giving birth and living on your own,.....1.....2 (487)
- c. Giving birth and getting married,1.....2 (488)
- d. Giving birth and living with the baby's father without getting married,.....1.....2 (489)
- e. Giving birth and putting the baby up for adoption,.....1.....2 (490)
- f. Having an abortion, or.....1.....2 (491)
- g. Doing something else (SPECIFY):.....1.....2 (492)

(493-494)

IF ALL NO, SKIP TO F37

F35. Which option did your father seem to favor at first?
[WRITE OPTION LETTER]

(495)

F36. Which of these options does he favor now?
[WRITE OPTION LETTER]

F37. Overall, how supportive is your father now regarding your pregnancy?
Would you say he is . . .

- Very supportive,.....1 (497)
- Somewhat supportive,.....2
- Neutral or doesn't care, or3
- Not at all supportive?4
- DK.....7

F38. Now, think about what happened when you told your girlfriends about your pregnancy--How comfortable did you feel about telling them this news?

(498-507)

F39. Because you became pregnant, has your relationship with any of your girlfriends changed?
How?

(508-517)

F40. Besides the people I've already asked you about, did you talk to anyone else regarding what to do about your pregnancy? Did you talk to. . .

- | | YES | NO | |
|--|-----|----|--|
| a. Any other adult relatives,.....1.....2 (518) | | | |
| (SPECIFY: _____) | | | |
| (519-520) | | | |
| b. Any friend(s),1.....2 (521) | | | |
| c. Anyone at your school, like a teacher or counselor,.....1 2 (522) | | | |
| d. Anyone at a church, like a priest, minister or rabbi,.....1 2 (523) | | | |
| e. Anyone at a clinic or doctor's office, or.....1.....2 (524) | | | |
| f. Anyone else, SPECIFY:.....1.....2 (525) | | | |

(526-527)

F41. Among all the people who you talked to about your pregnancy, did any of them try to persuade or convince you to place the baby up for adoption?

- YES (ASK F42).....1 (528)
- NO (SKIP TO F43).....2

F42. Who tried to persuade or convince you in this direction?

(529-538)

- F43. Among all the people who you talked to about your pregnancy, did any of them try to persuade or convince you to have an abortion?
- YES (ASK F44).....1 (539)
 NO (SKIP TO F45).....2
- F44. Who tried to persuade or convince you in this direction?
 _____ (540-549)
- F45. Among the people who you talked to about your pregnancy, did any of them try to persuade or convince you to continue the pregnancy?
- YES (ASK F46).....1 (550)
 NO (SKIP TO F47).....2
- F46. Who tried to persuade or convince you in this direction?
 _____ (551-560)
- F47. Among all the people you talked to, who helped you the most in making the decision to continue the pregnancy?
 _____ (561-562)
- F48. At any time during this pregnancy, did you consider having an abortion?
- YES (ASK F49).....1 (563)
 NO (SKIP TO F50).....2
- IF YES:
 F49. What made you decide not to have an abortion?
 _____ (564-573)

- IF NO:
 F50. Why didn't you consider having an abortion?
 _____ (574-583)

- F51. How are you now feeling about having a baby at this time? Do you feel . . .
- Very glad to be having a baby1 (584)
 A little glad to be having a baby.....2
 A little unhappy, or.....3
 Very unhappy to be having a baby.....4
 DK.....7

F52. How many months pregnant were you when you first went to a doctor or clinic for prenatal care?
 _____ NUMBER OF MONTHS (585-586)

F53. Based on your experiences taking care of the children of friends or relatives, or from what you have read or learned in child care classes, how much do you feel you know about caring for babies and small children? Would you say you:

- Know a lot about child care.....1 (587)
- Know something about child care.....2
- Know only a little about child care, or.....3
- Know nothing at all about child care.....4
- DK.....7

G. PREGNANCY EXPERIENCE-PRIOR PREGNANCIES

G1. Before your current pregnancy, did you ever think you might be pregnant because your period was late or you felt pregnancy symptoms, but it turned out that you were not pregnant?

- YES (ASK G2).....1 (588)
- NO (SKIP TO G5).....2

G2. When this happened did you ever go to a clinic or doctor for a pregnancy test?

- YES (ASK G3).....1 (589)
- NO (SKIP TO G5).....2
- VOLUNTEERED- HOME PREGNANCY TEST (SKIP TO G5).....3

G3. After you were told that the pregnancy test was negative (not pregnant), did anyone at the clinic or doctor's office talk to you about contraceptive or birth control methods?

- YES.....1 (590)
- NO.....2

G4a. Did you actually obtain a method of contraception or birth control at the same visit when you had a negative (not pregnant) pregnancy test?

- YES (SKIP TO G5).....1 (591)
- NO (ASK G4b).....2

G4b. Why not?

G5. Before your current pregnancy, did you ever have an abortion?

- YES (ASK G6).....1 (592)
- NO (SKIP TO G11).....2

G6a. When you had the abortion, did the person you were pregnant by know about the pregnancy?

- YES (ASK G6b).....1 (593)

NO (SKIP TO C7a)2
DK.....7

G6b. Was he in favor or against you having the abortion?

IN FAVOR.....1 (594)
AGAINST2
SAID IT WAS MY DECISION.....3
DK.....7

G7a. What about your mother/(NAME IN C8B), did she know about the pregnancy?

YES (ASK G7b).....1 (595)
NO (SKIP TO C8a)2
DK.....7

G7b. Was she in favor or against you having the abortion?

IN FAVOR.....1 (596)
AGAINST2
SAID IT WAS MY DECISION.....3
DK.....7

G8a. What about your father/(NAME IN C13B), did he know about the pregnancy?

YES (ASK G8b).....1 (597)
NO (SKIP TO C9)2
DK.....7

G8b. Was he in favor or against you having the abortion?

IN FAVOR.....1 (598)
AGAINST2
SAID IT WAS MY DECISION.....3
DK.....7

G9. Among all the people who knew you were pregnant, who was most important in helping you decide to have an abortion?

(599-600)

NO ONE KNEW ABOUT PREGNANCY.....98

G10. Can you tell me a little more about the circumstances of your last pregnancy and abortion, and why you decided to have an abortion?

(601-610)

G11. Before you got pregnant, had you ever obtained birth control information or services from a doctor, clinic, hospital or other organization?

YES (SKIP TO G13).....1 (611)
NO (ASK G12).....2

G12. Why had you never gone to a doctor or clinic for birth control information or services?

(612-621)

G13. Altogether, which of these methods of birth control have you ever used?
[HAND R METHOD CARD]

(622-635)

G14. After your baby is born do you think you will use any method of birth control or family planning?

YES (ASK G15).....1 (636)
NO (SKIP TO G16).....2

G15. Which of these methods do you think you are most likely to use then?
[HAND R METHOD CARD]

(637-638)

HAVEN'T DECIDED YET97

Now, I'm going to ask you some general questions about how easy or difficult it is for teenagers to get services like birth control or abortion in the area where you live.

G16. First, in the area where you live, how easy or difficult is it for a teenage girl to get a method of birth control or family planning? Would you say it is . . .

Very easy, (SKIP TO H1)1 (639)
Somewhat easy, (SKIP TO H1).....2
Somewhat difficult, or (ASK G17)3
Very difficult (ASK G17).....4
DK.....7

G17. Why is it difficult for a teenage girl to get a method of birth control or family planning in the area where you live?

(640-649)

H. KNOWLEDGE AND ATTITUDES TOWARD ABORTION

H1. In the area where you live, how easy or difficult is it for a teenage girl to get an abortion?
Would you say it is . . .

- Very easy,.....1 (650)
- Somewhat easy,.....2
- Somewhat difficult, or.....3
- Very difficult.....4
- DK.....7

H2. Now, I'm going to read you a list of reasons why it might be difficult for a teenage girl to get an abortion. As I read each one, please tell me whether or not you think it is a major reason, a minor reason, or not a reason why a teenage girl like you or your girlfriends might have difficulty in getting an abortion, if she wanted to.

a. How about because it is too expensive? Is that a . . .

- Major reason,1 (651)
- A minor reason, or.....2
- Not a reason why it would be difficult for a teenage girl to get an abortion?.3
- DK.....7

b. How about because there's nowhere nearby to get an abortion? Is that a . . .

- Major reason,1 (652)
- A minor reason, or.....2
- Not a reason why it would be difficult for a teenage girl to get an abortion?.3
- DK.....7

c. How about because her parents would stop her? Is that a . . .

- Major reason,1 (653)
- A minor reason, or.....2
- Not a reason why it would be difficult for a teenage girl to get an abortion?.3
- DK.....7

d. How about because it would be a difficult personal decision for a teenage girl to make? Is that a . . .

- Major reason,1 (654)
- A minor reason, or.....2
- Not a reason why it would be difficult for a teenage girl to get an abortion?.3
- DK.....7

e. Are there any (other) major reasons why you think it would be difficult for a teenage girl to get an abortion?

YES (SPECIFY).....1

NO.....2 (655-664)

DK.....7 (665)

- f. What about if a law is passed that requires teens under age 18 to have their parents consent or permission before they can get an abortion? Would this be a . . .
- Major reason, 1 (666)
 A minor reason, or 2
 Not a reason why it would be difficult for a teenage girl to get an abortion? 3
 DK 7

g. Have you heard anything about a law like this; what have you heard?

(667) _____

(668-677) _____

- H3. Do you have any girlfriends who have had an abortion?
- YES (ASK H4) 1 (678)
 NO (SKIP TO I1) 2
 DK 7

- H4a. In your opinion, was their decision to have an abortion all right or not all right given their circumstances?
- ALL RIGHT 1 (679)
 NOT ALL RIGHT 2
 DK 7

H4b. Why do you think their decision was all right/not all right?

(680-689) _____

I. ATTITUDES REGARDING TIMING OF FAMILY

Now, I would like to ask you some questions regarding what your parent(s) think is best for young people.
 [IF NECESSARY, CLARIFY THAT R SHOULD RESPOND FOR THE PARENT (MOTHER/FATHER/ NAME IN C8B, C13B) THAT R HAS LIVED WITH MOST RECENTLY] [IF TWO RESIDENT PARENTS DIFFER IN THEIR ATTITUDES RECORD BOTH]

- I1. First, what do your parents think about a girl having sex before marriage? Is this okay, not okay, or okay under certain circumstances? [PROBE FOR CIRCUMSTANCES]
- (690-699) _____
- _____

- I2. What about for guys, what do your parents think about a guy having sex before marriage? Is this okay, not okay, or okay under certain circumstances? [PROBE FOR CIRCUMSTANCES]
- (700-709) _____
- _____

I3. How do your parents feel about teenagers using a birth control method to prevent pregnancy? Is this okay, not okay, or okay under certain circumstances? [PROBE FOR CIRCUMSTANCES]

(710-719)

I4. Finally, how do your parents feel about a girl having a baby without being married to the father? Is this okay, not okay, or okay under certain circumstances? [PROBE FOR CIRCUMSTANCES]

(720-729)

J. OTHER EXPERIENCES AND ATTITUDES

Now I have just a few questions about some things that might have happened in your relationships with guys.

J1. First, have you ever been kept from doing things you wanted or needed to do, like going to school, the doctor or to see friends by a guy you were dating or having a sexual relationship with?

YES (ASK J2).....1 (730)
NO (SKIP TO J3).....2

J2. Has this happened with the father of your baby?

YES.....1 (731)
NO.....2

J3. Have you ever dated or been in a sexual relationship with a guy who has refused to let you use birth control or who refused to use a condom even though you wanted him to?

YES (ASK J4).....1 (732)
NO (SKIP TO J5).....2

J4. Has this ever happened with the father of your baby?

YES.....1 (733)
NO.....2

J5. Have you ever been hit or injured by a guy you were dating or having a sexual relationship with?

YES (ASK J6).....1 (734)
NO (SKIP TO J7).....2

J6. Has this ever happened with the father of your baby?

YES.....1 (735)
NO.....2

J7. Were you ever forced to have sexual intercourse with someone?

- YES (ASK J8a).....1 (736)
- NO (SKIP TO K1).....2
- REFUSED (SKIP TO K1).....9

J8a. How old were you when that first happened?

_____ YEARS OLD (737-738)

J8b. How often did this happen? Would you say:

- Very often.....1 (739)
- A few times.....2
- Only once3
- DK.....7

J8c. What was your relationship to the person you had this experience with?

(740-741)

K. BACKGROUND INFORMATION

Now, I have a few questions about your background and the background of your baby's father and your parents.

K1. Do you consider yourself to be . . .

- Hispanic or Latina?.....1 (742)
- White, nonHispanic?.....2
- Black or African American?.....3
- Asian or Pacific Islander or4
- Some other group? (SPECIFY, ALSO SPECIFY MIXED RACE HERE).....5 (743-744)
- BLACK & HISPANIC (VOLUNTEERED).....6

K2. What country were you born in?

(745-746)

IF NOT BORN IN UNITED STATES:

K3. How old were you when you first came to live in the United States?

_____ YEARS OLD (747-748)

K4. What is your native language?

IF NOT ENGLISH SKIP TO K7

IF ENGLISH:

K5. Is there any other language that you often or sometimes speak with your friends or family?

- YES (ASK K6).....1 (751)
- NO (SKIP TO K9).....2

K6. What language is that?

(IF SOME LANGUAGE OTHER THAN SPANISH, ADJUST QUESTIONS ACCORDINGLY)

- K7. In general, what language do you read and speak best? Would you say:
- Spanish/other only,1 (754)
 - Spanish/other better,2
 - Both Spanish/other and English equally well,3
 - English better, or4
 - English only?5

- K8. What language do you usually speak with your friends? Would you say:
- Spanish/other only,1 (755)
 - Mostly Spanish/other, some English,2
 - Spanish/other and English about equally,3
 - Mostly English, some Spanish/other, or4
 - English only?5

- K9. What is your religion?
- Protestant, (ASK K10).....1 (756)
 - Catholic, (SKIP TO K11).....2
 - Jewish, or (SKIP TO K11).....3
 - Other:(SPECIFY): (ASK K10).....4 (757-758)
 - NONE (SKIP TO K12).....5

- K10. Do you consider yourself a born-again Christian or Evangelical Christian?
- YES.....1 (759)
 - NO.....2

- K11. Approximately how often do you attend religious services? Would you say:
- Once a week or more,1 (760)
 - About once a month,2
 - Less than once a month, or3
 - Never?.....4

- K12. How old is the father of your baby?
- _____ years old
- DON'T KNOW97 (761-762)

- K13. Does he consider himself to be . . .
- Hispanic or Latino?1 (763)
 - White, nonHispanic?2
 - Black or African American?3
 - Asian or Pacific Islander or4
 - Some other group? (SPECIFY).....5 (764-765)
 - BLACK & HISPANIC (VOLUNTEERED)6

- K14. What country was he born in?
- _____
- (766-767) DK.....97

- K15. What is the highest grade of school or year of college that he has completed?

NO SCHOOLING	1	(768)
LESS THAN HIGH SCHOOL.....	2	
HIGH SCHOOL COMPLETED/GED.....	3	
SOME COLLEGE / AA.....	4	
VOCATIONAL OR TECHNICAL TRAINING.....	5	
COLLEGE DEGREE+.....	6	
DK.....	7	

K16. Is he currently going to school or will he be going to school when the next school year begins?

YES.....	1	(769)
NO.....	2	

K17. Is he currently working?

YES (ASK K18a).....	1	(770)
NO (SKIP TO K19).....	2	
LOOKING FOR WORK (SKIP TO K19).....	3	
DK (SKIP TO K19).....	7	

K18a. Is it a full-time job, a part-time job, or occasional work that he does when he can?

FULL-TIME JOB.....	1	(771)
PART-TIME JOB.....	2	
OCCASIONAL WORK.....	3	
DK.....	7	

K18b. What kind of work does he do?

_____ (772-773)

ASK K19 ONLY IF K16 AND K17=2 (NOT IN SCHOOL AND NOT WORKING):

K19. What does he do?

_____ (774-775)

K20. Does he have any other children?

YES (ASK K21).....	1	(776)
NO (SKIP TO K22).....	2	
DK (SKIP TO K22).....	7	

K21. How many children does he have? _____ (777-778)

K22. Are your biological parents currently. . .

Married to each other,.....	1	(779)
Divorced,.....	2	
Separated, or	3	
Were they never married?.....	4	
ONE OR BOTH ARE DEAD	5	
YOU DON'T KNOW BECAUSE YOU WERE ADOPTED	6	

K23. How old was your biological mother when she had her first child?

_____ years old (780-781)
 DON'T KNOW97

K24. Is your mother/(NAME IN C8B) currently working? (782)
 YES (ASK K25)1
 NO (SKIP TO K26)2
 DK (SKIP TO K26).....7

K25. Is it a full-time job, part-time job, or occasional work? (783)
 FULL-TIME (AT LEAST 25 HOURS PER WEEK).....1
 PART-TIME (LESS THAN 25 HOURS PER WEEK)2
 OCCASIONAL WORK.....3

K26. What country was she born in?
 (784-785) _____

K27. Is your father/(NAME IN C13B) currently working? (786)
 YES (ASK K28)1
 NO (SKIP TO K29)2
 DK (SKIP TO K29).....7

K28. Is it a full-time job, part-time job, or occasional work? (787)
 FULL-TIME (AT LEAST 25 HOURS PER WEEK).....1
 PART-TIME (LESS THAN 25 HOURS PER WEEK)2
 OCCASIONAL WORK.....3

K29. What country was your father/(NAME IN C13B) born in?
 (788-789) _____

K30. During the past year, what sources have you used to support yourself? As I read the following list tell me "yes" or "no" if you have you been supported each source:

	YES	NO	
Your parents.....	1.....	2.....	(790)
Yourself, from money you earn at a job.....	1.....	2.....	(791)
Father of your baby.....	1.....	2.....	(792)
Parents of your baby's father.....	1.....	2.....	(793)
Other relatives.....	1.....	2.....	(794)
Other friends.....	1.....	2.....	(795)
Unemployment insurance.....	1.....	2.....	(796)
AFDC (AID TO FAMILIES WITH DEPENDENT CHILDREN)			
/Welfare, or.....	1.....	2.....	(797)
Some other way? (SPECIFY).....	1.....	2.....	(798)

K31. Which one of these sources have you mostly relied upon for support during the past year?
 _____ (801-802)

K32. Are you currently on Medi-Cal?
 YES.....1 (803)
 NO2
 DK.....7

K33. Do you have any private health insurance coverage?
 YES.....1 (804)
 NO2
 DK.....7

K34. How do you plan to pay for the medical costs of delivering your baby?
 MEDICAL WILL COVER.....1 (805)
 PRIVATE INSURANCE WILL COVER.....2
 OTHER (SPECIFY).....3
 _____ (806-807)
 DK.....7

K35. Are you currently receiving AFDC (Aid to Families with Dependent Children) or Welfare?
 YES.....1 (808)
 NO.....2
 DK.....7

K36. Does any other adult living with you currently receive AFDC?
 YES (ASK K37).....1 (809)
 NO (SKIP TO K38).....2
 DK (SKIP TO K38).....7

(810-811) K37. Who? _____

K38. Are you currently participating in the WIC (Women, Infants, and Children) Program?
 YES.....1 (812)
 NO.....2
 DK.....7

L. FUTURE

Finally, before we finish I have a few more questions about what you think your life will be like after the baby is born.

L1. First, who do you think you will live with after the baby is born?
 (813-832)

L2. Who will mostly take care of the baby after it is born?

(833-834)

L3. Who do you think will usually look after the baby while you are in school or working?

(835-836)

NOT APPLICABLE-DOESN'T PLAN TO WORK OR GO TO SCHOOL.....98

L4. Altogether, how many children would you like to have?

_____ NUMBER OF CHILDREN (IF 1 SKIP TO L6)
(837-838)

L5. How old would you like to be when you have another child?

_____ YEARS OLD
(839-840)

L6. Now I'm going to read you a list of people and things you may depend on to help pay the costs of caring for a baby. Tell me if you think you will strongly depend, somewhat depend or you won't depend at all on these people or things or if you're not sure:

	Strongly Depend	Somewhat Depend	Will Not Depend	Not Depend	
Sure					
a. You and your earnings	1	2	3	4	(841)
b. The baby's father and his earnings	1	2	3	4	(842)
c. Your mother or father (843)	1	2	3	4	
d. Parents of baby's father	1	2	3	4	(844)
e. Some other relative (SPECIFY: _____)	1	2	3	4	(845) (846-847)
f. A friend	1	2	3	4	(848)
g. AFDC/Social Service/Welfare	1	2	3	4	(849)
h. Other (SPECIFY: _____)	1	2	3	4	(850) (851-852)

L7. After the baby is born, do you think your income or living situation will be the same, better, or worse than it is now?

SAME (SKIP TO L9).....	1	(853)
BETTER (ASK L8).....	2	
WORSE (ASK L8).....	3	
DK (SKIP TO L9).....	7	

L8. How will it be better/worse?

(854-863)

L9. Considering everything, what do you think are the bad things or disadvantages about having a baby now instead of waiting until you are older?

(864-873)

L10. And what do you think are the good things or advantages about having a baby now instead of waiting until you are older?

(874-883)

L11. Finally, before we finish is there anything else that you can think of to tell me that would help me to understand why you are having a baby and what this pregnancy means to you?

(884-893)

GO TO LAST PAGE

CURRENT ZIP CODE FROM LAST PAGE _____

(894-898)

INTERVIEWER COMMENTS:

[PLEASE RECORD ANYTHING ABOUT THE INTERVIEW THAT WAS UNUSUAL OR ANYTHING ABOUT THE STATE OF MIND OR ATTITUDE OF THE RESPONDENT THAT MIGHT HAVE AFFECTED HER RESPONSES]

Which of the following best describes the respondent's attitude:

- Very antagonistic1 (899)
- Somewhat antagonistic.....2
- Neutral3
- Somewhat helpful.....4
- Very helpful.....5

How would you describe the respondent's interest in the interview:

- Very uninterested1 (900)
- Somewhat uninterested.....2
- Neutral3
- Somewhat interested.....4
- Very interested5

Did the respondent ask any questions about the survey

- YES1 (901)
- NO2

Specify: _____

IF THE INTERVIEW WAS TERMINATED:

Please describe the exact situation under which the interview was terminated:

Interviewer: _____ (Signature)

Edited by : _____ Date: _____

Edited by : _____ Date: _____