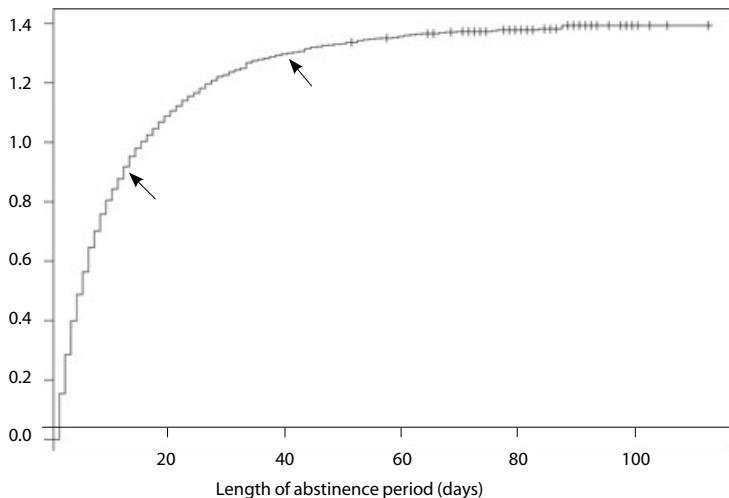


FIGURE 1. Cumulative hazard of sex after a period of abstinence among a sample of adolescent women attending clinics in Indianapolis, by length of abstinence period, 1999–2006

Cumulative hazard of sex



Note: Arrows mark cut points defining abstinence periods as short (fewer than 17 days), intermediate (17–39 days) or long (40–112 days).

TABLE 1. Selected characteristics of women at the start of daily diary periods in a study of characteristics associated with sex after a period of abstinence

Characteristic	Mean or % (N=1,573)
Means	
Age	17.3 (1.8)
Daily positive mood (range, 3–15)	9.2 (3.6)
Daily negative mood (range, 3–15)	5.7 (2.9)
Daily sexual interest (range, 1–5)	1.6 (1.1)
Daily partner support (range, 0–4)	1.9 (1.7)
Quarterly relationship quality (range, 6–24)	19.5 (3.9)
Percentages	
Recent STD	17.1
Distant STD	63.1

Notes: A total of 354 women contributed diary periods. Figures in parentheses are standard deviations. A recent STD is one that was diagnosed at the beginning of a quarterly diary period; a distant STD is one that was diagnosed in a previous period.

TABLE 2. Hazard ratios (and 95% confidence intervals) from univariate frailty models assessing associations between selected characteristics and the risk that an abstinence period will end with sexual intercourse, by length of interval

Characteristic	Short	Intermediate	Long
Age	1.07 (1.05–1.09)***	1.08 (1.01–1.15)*	1.24 (1.05–1.45)*
Daily positive mood	1.03 (1.02–1.04)***	1.02 (0.99–1.05)	0.99 (0.92–1.07)
Daily negative mood	0.98 (0.97–0.99)***	0.95 (0.92–0.99)**	1.03 (0.93–1.13)
Daily sexual interest	1.14 (1.11–1.17)***	1.16 (1.07–1.25)***	1.33 (1.07–1.67)*
Daily partner support	1.14 (1.12–1.17)***	1.12 (1.05–1.18)***	1.14 (0.96–1.34)
Quarterly relationship quality	1.02 (1.01–1.03)***	1.05 (1.02–1.08)**	1.10 (1.01–1.19)*
Recent STD	0.91 (0.83–1.00)*	1.40 (1.06–1.85)*	0.93 (0.43–2.00)
Distant STD	1.16 (1.03–1.29)*	1.18 (0.90–1.54)	1.30 (0.67–2.52)

* $p < .05$. ** $p < .01$. *** $p < .001$. Note: A short abstinence period is fewer than 17 days, intermediate is 17–39 days and long is 40–112 days.