

TABLE 1. Selected baseline characteristics of a sample of low-income clients of a nurse home-visit program, Washington State, 2009–2013

Characteristic	Total (N=337)	Usual care (N=169)	Enhanced care (N=168)
Mean age (SD, range)	19.0 (3.0, 14.3–42.8)	19.2 (3.1, 14.6–42.8)	18.8 (2.8, 14.3–33.6)
Race/ethnicity			
Hispanic	35.6	32.0	39.3
White	30.0	29.0	31.0
Black	15.4	15.4	15.5
Asian/Pacific Islander	6.5	7.7	5.4
American Indian/Alaskan Native	3.9	5.3	2.4
Multiracial	5.0	7.1	3.0
Missing	3.6	3.6	3.6
Educational attainment			
<12th grade	65.6	63.9	67.3
GED	5.9	4.7	7.1
High school	19.6	21.9	17.3
Postsecondary	8.9	9.5	8.3
Employment status			
Employed full-time	4.5	5.3	3.6
Employed part-time	19.6	23.1	16.1
Unemployed	70.6	68.1	73.2
Missing	5.3	3.6	7.1
Annual income			
Dependent on parent/guardian	13.9	11.8	16.1
≤\$6,000	24.9	29.6	20.2
\$6,001–12,000	13.1	10.7	15.5
\$12,001–20,000	15.1	17.2	13.1
≥\$20,001	8.3	9.5	7.1
Don't know/missing	24.6	21.3	28.0
Birth control used at conception			
Hormonal	17.5	16.0	19.1
Other	28.8	29.0	28.6
None	53.7	55.0	52.4
Intend to have another baby			
Yes	72.4	72.2	72.6
No	15.1	14.2	16.1
Not sure/don't know	12.5	13.6	11.3
Desired time frame for next pregnancy			
<2 years	7.1	6.5	7.7
2–5 years	39.8	40.2	39.3
>5 years	34.7	34.3	35.1
Don't know	3.3	4.7	1.8
No more children wanted	15.1	14.2	16.1

†All participants in categories other than Hispanic were non-Hispanic. *Notes:* Figures are percentages unless otherwise noted. Significance testing was conducted, and no differences were observed at $p < .10$. SD=standard deviation. Full-time and part-time employment were defined as 37 or more hours per week and less than 37 hours per week, respectively.

FIGURE 1. Survival curve showing the proportion of study participants who remained nonpregnant after the index birth, by number of days since the birth, according to study group

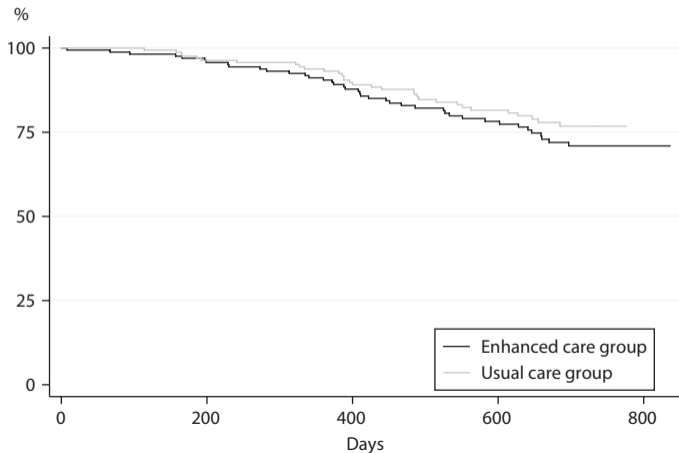


TABLE 2. Mean number of days during which nonpregnant study participants did not use an effective contraceptive method, by number of months since first birth, according to study group

Months since first birth	All methods		LARC use removed	
	Enhanced care	Usual care	Enhanced care	Usual care
0–3	52.6 (48.3–57.3)**	62.2 (58.2–66.6)	65.0 (56.1–75.3)**	79.2 (70.1–89.3)
4–6	20.5 (15.8–26.6)	28.0 (22.6–34.6)	39.2 (30.9–49.7)*	54.9 (45.2–66.5)
7–9	22.6 (17.5–29.2)	27.1 (21.5–34.1)	43.3 (34.2–54.8)	54.4 (45.2–65.5)
10–12	24.4 (19.0–31.3)	29.1 (23.3–36.2)	47.4 (38.0–59.1)	57.9 (48.5–69.2)
13–15	27.3 (21.3–35.0)	33.8 (27.4–41.5)	53.4 (42.9–66.3)	66.2 (56.0–78.3)
16–18	34.8 (28.1–43.1)	31.4 (25.3–39.1)	64.1 (52.5–78.2)	67.4 (56.5–80.4)
19–21	35.5 (28.6–43.9)	35.5 (28.5–44.1)	62.5 (50.7–77.0)	66.2 (55.7–78.8)
22–24	35.5 (28.7–44.0)	36.9 (29.5–46.2)	62.2 (50.5–76.7)	73.2 (61.7–86.8)

*Significantly different from mean number of days for the usual care group at $p < .05$. **Significantly different from mean number of days for the usual care group at $p < .01$. Notes: Survey intervals were standardized to 90 days. Figures in parentheses are 95% confidence intervals. LARC=long-acting reversible contraceptive.