

State Facts About Abortion

Indiana

National Background and Context

Abortion is a common experience: At current rates, about three in ten American women will have had an abortion by the time she reaches age 45. Moreover, a broad cross section of U.S. women have abortions. 58% of women having abortions are in their 20s; 61% have one or more children; 85% are unmarried; 69% are economically disadvantaged; and 73% report a religious affiliation. No racial or ethnic group makes up a majority: 36% of women obtaining abortions are white non-Hispanic, 30% are black non-Hispanic, 25% are Hispanic and 9% are of other racial backgrounds.

Contraceptive use is a key predictor of women's recourse to abortion. The very small group of American women who are at risk of experiencing an unintended pregnancy but are not using contraceptives account for more than half of all abortions. Many of these women did not think they would get pregnant or had concerns about contraceptive methods. The remainder of abortions occur among the much larger group of women who were using contraceptives in the month they became pregnant. Many of these women report difficulty using contraceptives consistently.

Abortion is one of the safest surgical procedures for women in the United States. Fewer than 0.5% of women obtaining abortions experience a complication, and the risk of death associated with abortion is about one-tenth that associated with childbirth.

In the 1973 *Roe v. Wade* decision, the U.S. Supreme Court ruled that a woman, in consultation with her physician, has a constitutionally protected right to choose abortion in the early stages of pregnancy—that is, before viability. In 1992, the Court upheld the basic right to abortion in *Planned Parenthood v. Casey*. However, it also expanded the ability of the states to enact all but the most extreme restrictions on women's access to abortion. The most common restrictions in effect are parental notification or consent requirements for minors, limitations on public funding, and unnecessary and overly burdensome regulations on abortion facilities.

Pregnancies and Their Outcomes

- In 2011, there were 6 million pregnancies to the 63 million women of reproductive age (15-44) in the United States. Sixty-seven percent of these pregnancies resulted in live births

and 18% in abortions; the remaining 15% ended in miscarriage.

- In Indiana, 110,800 of the 1,287,120 women of reproductive age became pregnant in 2011. 76% of these pregnancies resulted in live births and 9% in induced

abortions.

- In 2011, 1.1 million American women obtained abortions, producing a rate of 16.9 abortions per 1,000 women of reproductive age. The rate is a decrease from 2008, when the abortion rate was 19.4 abortions per 1,000 women 15-44.

- In 2011, 9,430 women obtained abortions in Indiana, producing a rate of 7.3 abortions per 1,000 women of reproductive age. Some of these women were from other states, and some Indiana residents had abortions in other states, so this rate may not reflect the abortion rate of state residents. The rate decreased 11% since 2008, when it was 8.2 abortions per 1,000 women 15-44. Abortions in Indiana represent 0.9% of all abortions in the United States.

Where Do Women Obtain Abortions?

- In 2011, there were 1,720 abortion providers in the United States. This is a slight (4%) decrease from 2008, when there were 1,787 abortion providers. Thirty-five percent of these providers were hospitals, 19% were abortion clinics (clinics where more than half of all patient visits were for abortion), 30% were clinics where fewer than half of all visits were for abortion, and 17% were private physicians' offices. Sixty-three percent of all abortions were provided at abortion clinics, 31% at other clinics, 4% at hospitals and 1% at private physicians' offices.

- In 2011, there were 12 abortion providers in Indiana; 10 of those were clinics. This represents no change in overall providers and a 11% increase in clinics from 2008, when there were 12 abortion providers overall, of which 9 were abortion clinics.

- In 2011, 89% of U.S. counties had no abortion clinic. 38% of American women lived in these counties, which meant they would have to travel outside their county to obtain an abortion. Of women obtaining abortions in 2008, one-third traveled more than 25 miles.

- In 2011, 93% of Indiana counties had no abortion clinic. 61% of Indiana women lived in these counties.

Restrictions on Abortion

- A woman must receive state-directed counseling that includes information designed to discourage her from having an abortion and then wait 18 hours before procedure is provided. Counseling must be provided in person and must take place before the waiting period begins, thereby necessitating two separate trips to the facility.

- Abortion is covered in private insurance policies only in cases of life endangerment, rape, incest or if the woman's health is severely compromised unless an optional rider is purchased at an additional cost.

- Health plans that will be offered in the state's health exchange under the Affordable Care Act can only cover abortion in cases when the woman's life is endangered, her health is severely

compromised, rape or incest.

- Abortion is covered in insurance policies for public employees only in cases of life endangerment, rape or incest or when her health is severely compromised.

- The use of telemedicine for the performance of medication abortion is prohibited.

- The parent of a minor must consent before an abortion is provided.

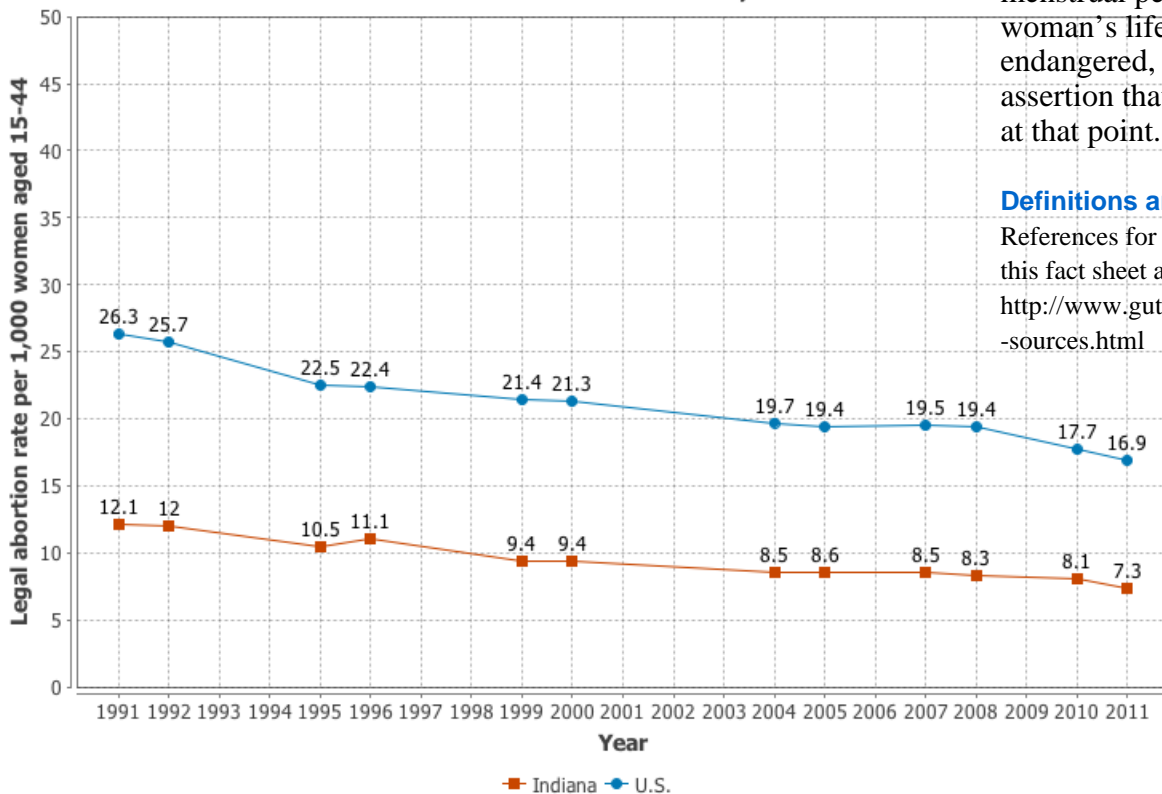
- Public funding is available for abortion only in cases of life endangerment, physical health, rape or incest.



undergo an
obtaining an
provider must offer
view the image.

may be performed at
or after 20 weeks postfertilization
(22 weeks after the woman's last
menstrual period) only if the
woman's life or physical health is
endangered, based on the spurious
assertion that a fetus can feel pain
at that point.

U.S. and Indiana abortion rates, 1991-2011



Definitions and Data Sources

References for information contained in this fact sheet are available at <http://www.guttmacher.org/pubs/sfaa/sfaa-sources.html>