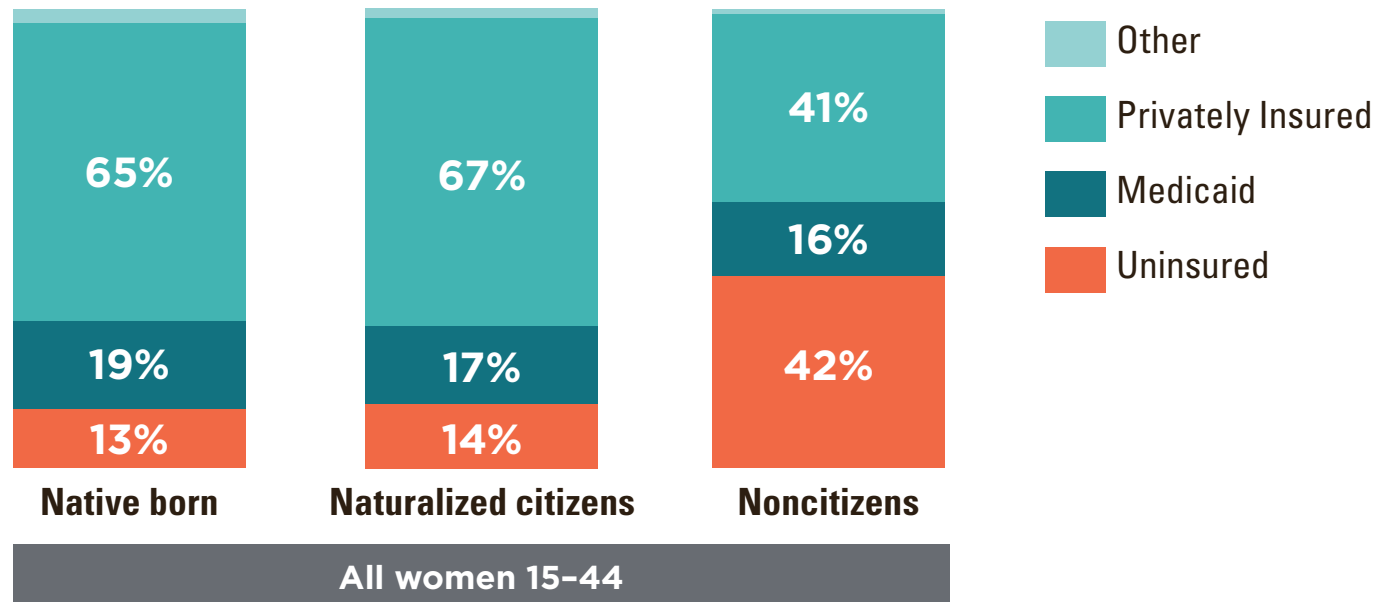
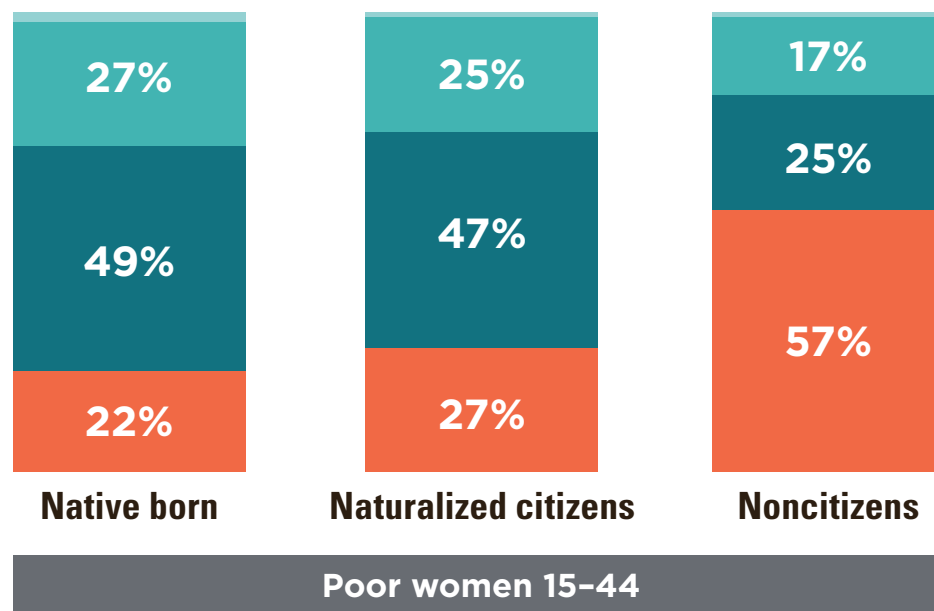


Immigrant women need health coverage, not legal and policy barriers.

The 6.4 million women of reproductive age who are not U.S. citizens are **much less likely to be insured...**



...especially those who live in poverty and are often barred from Medicaid.



Notes: Poor women are those in families with incomes under the federal poverty level (\$19,530 for a family of three in 2014). Data include some information on undocumented immigrants, although that information is generally acknowledged to be a considerable undercount of that population group.
Source: Special tabulations of data from the 2015 American Community Survey (data are for 2014).