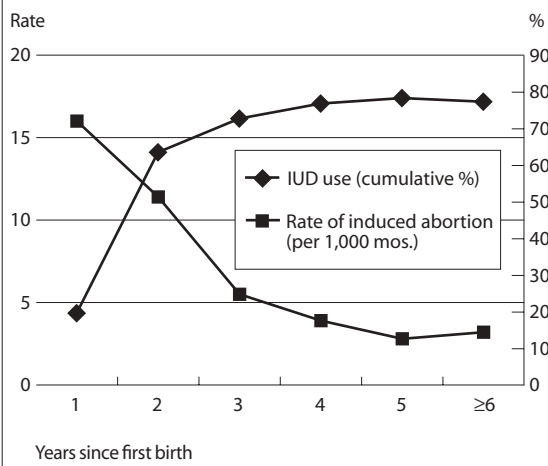
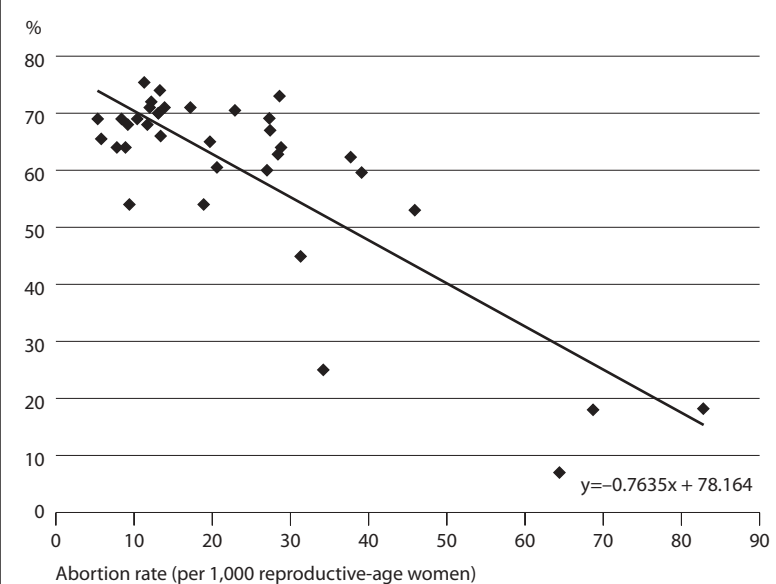


FIGURE 1. Rate of induced abortion and cumulative percentage of women using an IUD, by years since first birth, Shanghai, China



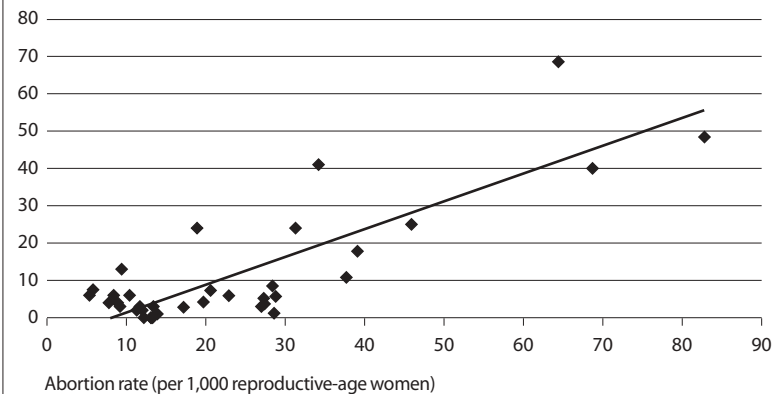
Source: reference 9.

FIGURE 2. Regression of the percentage of married, reproductive-age women using modern contraceptives on the abortion rate in selected countries at points when total fertility was 1.7–2.2 births per woman



Sources: **Abortion**—Bulgaria (1976): Tietze C, 1979 (reference 19); England and Wales (1976, 1983, 1986, 1989, 1991, 1993, 1995, 1997 and 1998): Macfarlane A et al., *Birth Counts: Statistics of Pregnancy and Childbirth*, London: The Stationery Office, 2000; Scotland (1976, 1983, 1986 and 1991): Macfarlane A et al., *Birth Counts: Statistics of Pregnancy and Childbirth*, London: The Stationery Office, 2000; Czech Republic (1970 and 1993): Wynnyczuk V and Uzel R, Czech Republic and Slovak Republic, in: David HP and Skilogianis J, eds., 1999 (reference 18), pp. 91–120, and (for 1991): reference 17; Denmark (1970 and 1975): Tietze C, 1979 (reference 19); Finland (1971): Tietze C, 1979 (reference 19), and (for 1989): reference 17; Hungary (1958 and 1966): Tietze C, 1979 (reference 19), and (for 1986 and 1992): David HP, 1999 (reference 31); Netherlands (1975 and 1977): reference 17; Norway (1977): Tietze C, 1979 (reference 19), and (for 1988): reference 17; Singapore (1977): Tietze C, 1979 (reference 19), and (for 1982) reference 17; United States (1976): Tietze C, 1979 (reference 19), and (for 1982, 1988, 1990 and 1995) reference 17. **Contraception**—Great Britain: Macfarlane A et al., *Birth Counts: Statistics of Pregnancy and Childbirth*, London: The Stationery Office, 2000; all others: United Nations, 1998 (see reference 19).

FIGURE 3. Regression of the percentage of married, reproductive-age women using traditional methods on the abortion rate in selected countries with overall contraceptive prevalence of greater than 65% and total fertility of 1.7–2.2 births per woman



Sources: See Figure 2.